

## Twitter Thread by [Vikrant](#)



**[Vikrant](#)**

[@Trading0secrets](#)



**Full chart learning course ■**

**In single thread ■**

**Process of trading through  
price action ■■**

1■ Time frame - always start looking chart ■ with higher time frame (weekly/monthly) then after go for lower one .

Positional trader - weekly/monthly

Swing trader - daily /3hours

Intraday trader - 15/30min

2■ demand /supply zone - then draw major/minor demand & supply zone .■■■

Ex : #SIS



### 3 ■ Trading style -

■ If you are positional trader then focus on major demand & supply zone.

■ If you are swing trader then focus on minor demand & supply zone.

Wait for price to come on it then, ■

### 4 ■ find consolidation -

■ Positional trader - consolidation should be above 1/2 years.

■ swing trader - consolidation should be below 1/2 years

■ Intraday trader - consolidation should above 5/10 days.

Ex - #galxo / #triveni / #vimta



Full [#volume](#) analysis thread \U0001f9f5

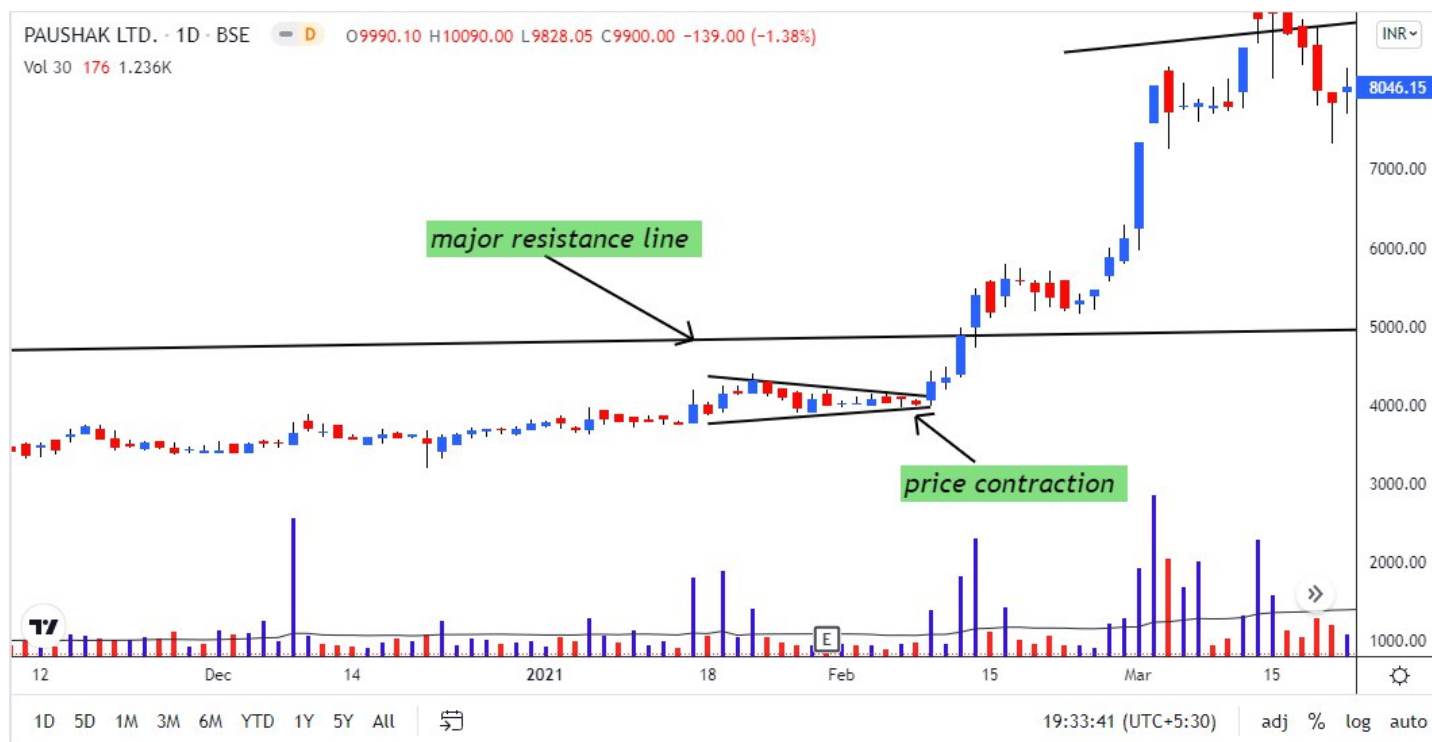
One thing which big player can never hide - VOLUME <https://t.co/MjtFq384N0>

— Vikrant (@Trading0secrets) [October 20, 2021](#)

7 ■ Pivot Entry point ■ - pivot point is that point in which chances of big move occur is much more.

If stock making good contraction of price near major/minor demand & supply then only enter that trade ■

Ex - #paushak /// #tatapower



8 ■ Stoploss - every types of trader must follow sl in any condition because after bull market over only 40% stocks recover.

■positional trader - 20/25% sl

■swing trader - 5/7% sl

■Intraday /btst - 1/2% sl

9 ■position sizing(RM) - your position size neither too big nor too small .

■Postional trader - allocate 10/15% fund in one stock.

■Swing trader - allocate 20/25% fund

■ Intraday trader - allocate 20/25% fund

All calculation is based on risk management.

■ Targets ■ - targets must be based on good R:R (normally 1:2)

If you simply follow 1:2 then u need to correct 40% time then also u made alot

■Positional - 50/100%

■swing - 15/30%

■Intraday - 3/5%

1■■1■■- Trailing sl & partial booking -

trailing sl & partial booking are very important for profit protection .

■Partial booking - IF as per R:R you earn double , Then time to book 50% profit.

Rest hold for trail sl cost to cost.■■■

This strategy mainly work in Bull Market

If you are waiting for next Bull Market....

You can watch my latest video (when will next Bull run come ) ■■■

<https://t.co/OI19TkGvBK>

Thankyou ■so much for reading ■

I hope I added some value in your learning journey ■

If you wanna weekly calls you can join my telegram channel ■

<https://t.co/aWvm8Hhkh8>