

## Twitter Thread by ██████sp████tua██████



██████sp████tua██████

@spiritual\_



So let's begin...

Taking a look at this screenshot from overlyzer (<https://t.co/5OcOhoBSj1>).

Home gameplay was at 9% while Away team gameplay was at 21%. With field pressure at 5%.

So I will explain what I do in situations like this.

1: I must get myself familiar with the <https://t.co/zCVZOTCf9u>

★  S-League Solomon Islands

LIVE

45'

Pre-game	5.70	4.88	1.42
Live	11.00	6.50	1.17

Laugu United 0 1 Solomon Warriors

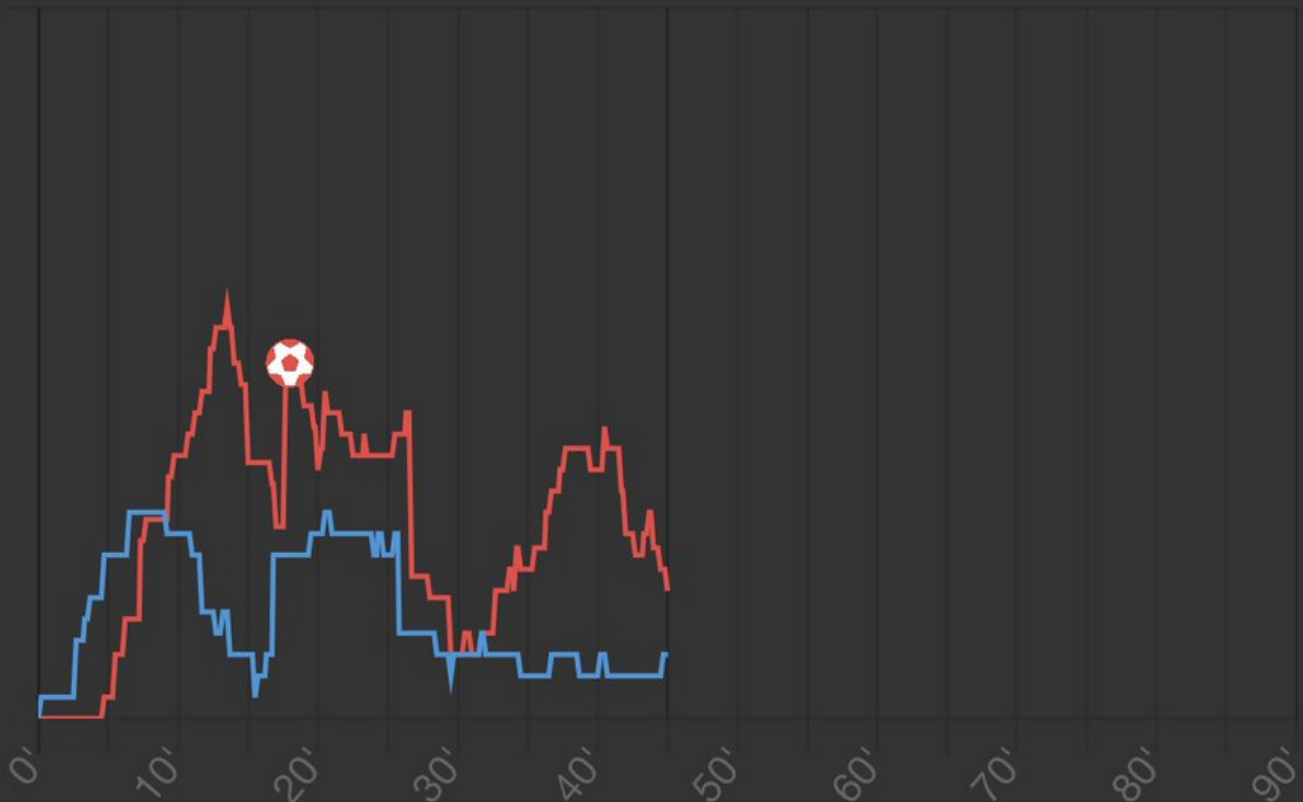
9%

21%

Pressure Stats Ticker

Ø 16%

Pressure 5%



Teams playing, by checking them out using either Sofa, FlashScore etc to know the stronger team.

So back to the screenshot(s)... With #AwayTeam taking the lead already, game play @45mins was poor, but #AwayTeam was still dominating the game... When you have a graph like this,

★  S-League Solomon Islands

LIVE

45'

Pre-game	5.70	4.88	1.42
Live	11.00	6.50	1.17

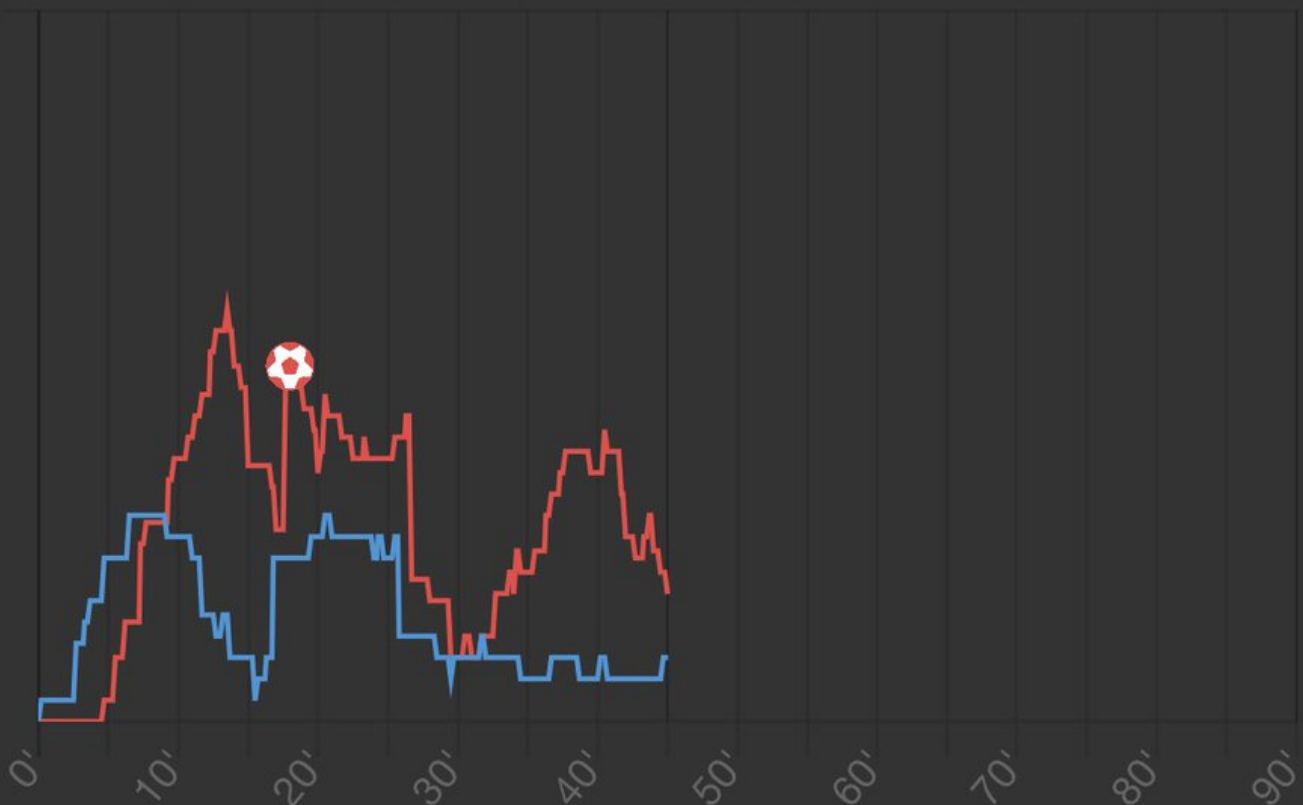
Laugu United 0 1 Solomon Warriors

9%

21%

Pressure Stats Ticker

Ø 16% Pressure 5%



Quick events to look out for:

\*Corners.

\*goal kicks.

\*fouls.

Now if you are opportune to be watching the game live or using any other form of virtual/3D view, it should be an added

advantage to help you predict better. (I will do a video explaining all this later ■).

Best Markets to look out for while using @overlyzer for inPlays.

- \*1stHalf correct score.

- \*Team to score next goal.

- \*Team to take next corner: Use both team pressure and game/field pressure to determine this.

- \*Foul/Card market.

★  S-League Solomon Islands

LIVE

45'

Pre-game	5.70	4.88	1.42
Live	11.00	6.50	1.17

Laugu United 0 1 Solomon Warriors

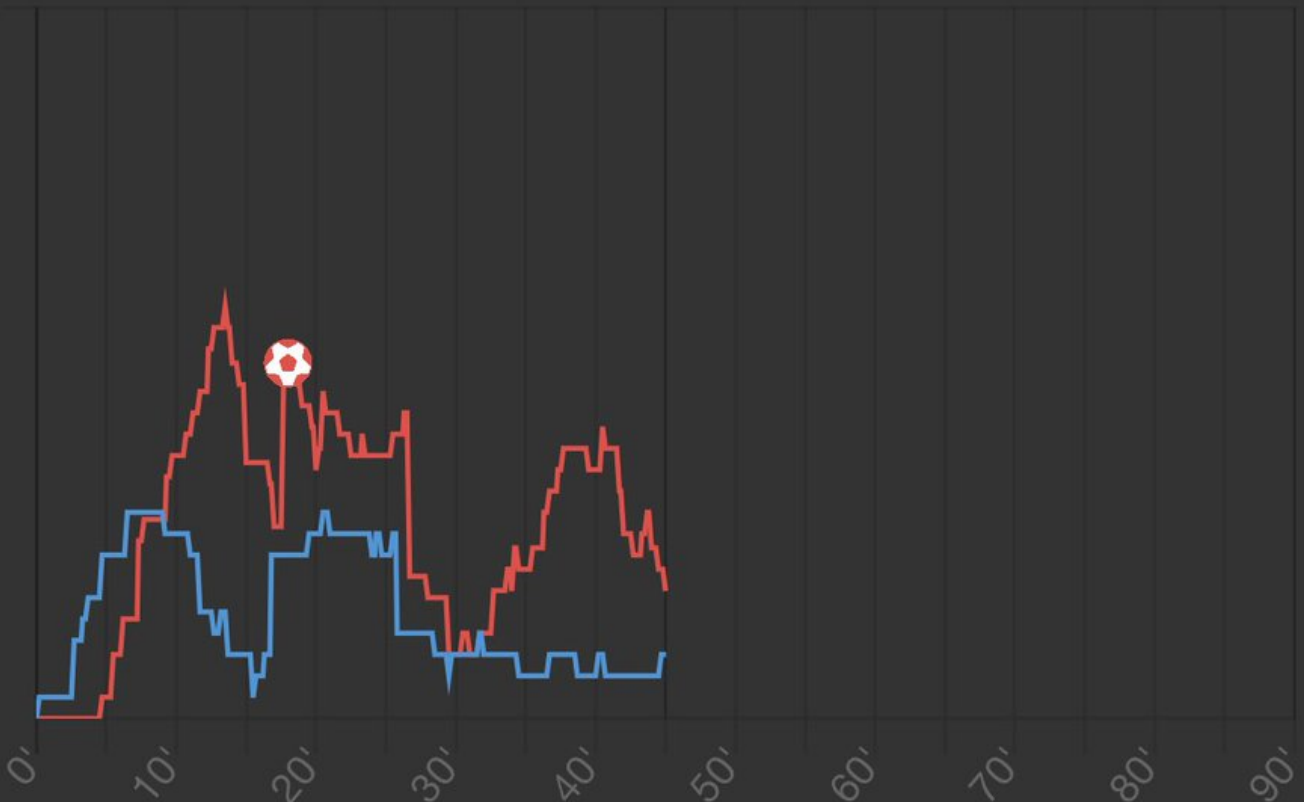
9%

21%

Pressure Stats Ticker

Ø 16%

Pressure 5%



When you have a balance graph like this, it means both teams are making sure they don't get penetrated. This is perfect for correct score market and under goals market. But you will have higher odds for Throwing and goal kicks under quick events. Try it.

Pre-game

1.65

4.21

4.42

Live

1.00

51.00

51.00

Sporting Braga U23

4

1

Belenenses U23

36%

38%

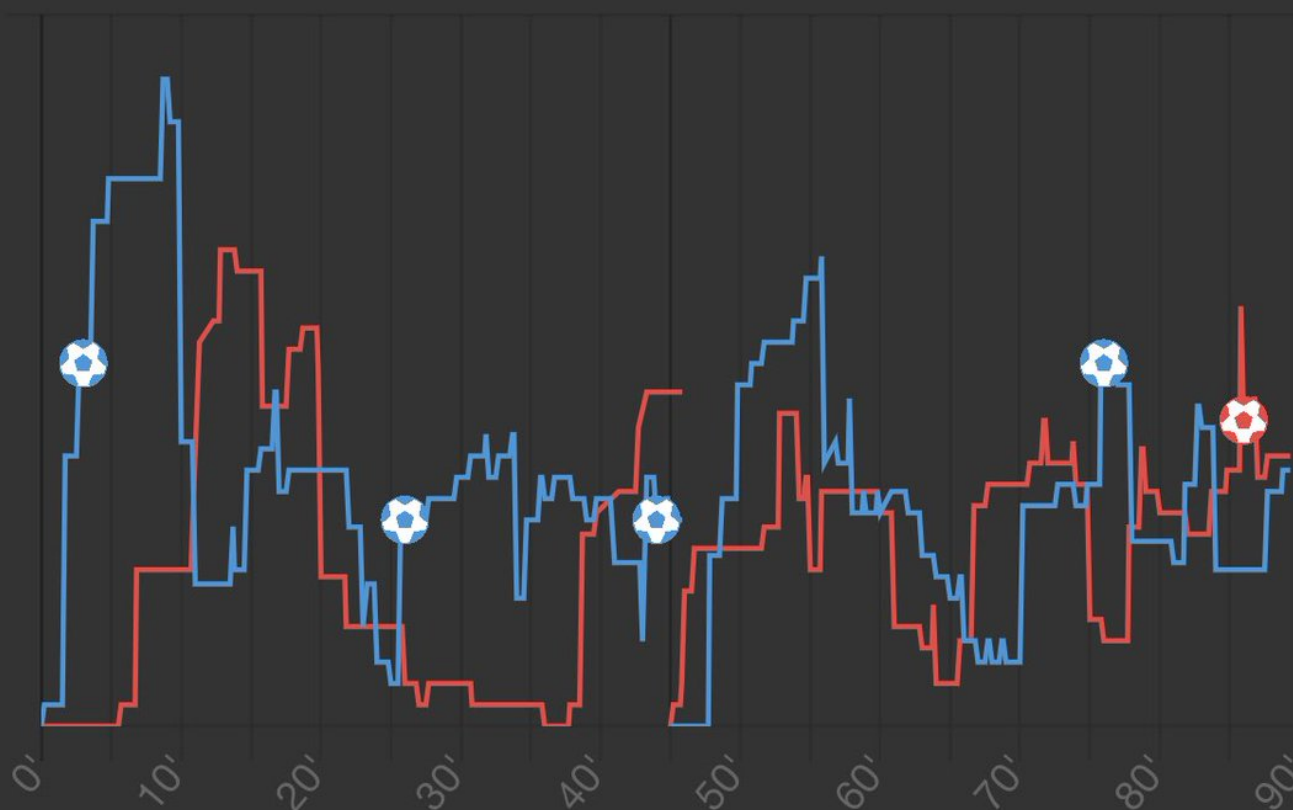
Pressure

Stats

Ticker

Ø 41%

Pressure 45%



The Over predictions on the [@overlyzer](#) site is another great thing you can use to make money, without greed.

As much as 100games are available, but what I do is extract 3, 6, 10, 15, 27 odds from the over1.5 table, 80% and above.

You can try this too for your daily game plan.



Date

League



Over

Under

Date ↓

League

0.5

1.5

2.5

3.5

4.5

5.5

Sydney - Brisbane Roar

20.02.2021 08:10 A-League Australia

94.17 %

70.42 %

29.17 %

8.75 %

2.92 %

2.92 %

Perth Glory - Melbourne City

20.02.2021 10:20 A-League Australia

97.08 %

88.33 %

73.75 %

59.17 %

26.67 %

8.75 %

Kasımpaşa - Fatih Karagümrük

20.02.2021 10:30 Super Lig Turkey

97.08 %

88.33 %

43.75 %

17.50 %

5.83 %

0.00 %

AS Saint-Étienne - Stade de Reims

20.02.2021 12:00 Ligue 1 France

91.25 %

73.75 %

44.17 %

35.42 %

5.83 %

0.00 %



Live



Over/Under



Scores



Profile

Things to note:

Don't just jump on the games on overlyzer, check out the teams playing first of all, to know the stronger side. Then switch back to @overlyzer and monitor d graph. When the stronger team is maintaining a high pressure %, U can back them for next goal market. Or,

To play next corner.

When you notice the weaker team is dragging marks with the stronger team, best market to go for is maintaining the correct score (Maybe 0:0 or 1:1 or 0:1) or anybody win, or giving the weaker team W or D. Good for Turkish league and S.A, NG Leagues.

I will do a video later on giving you guys a better insight.

Until then, feel free to drop your questions on how to use of @overlyzer, I have an hour to spare.

Thanks.