

Twitter Thread by Arpan K.



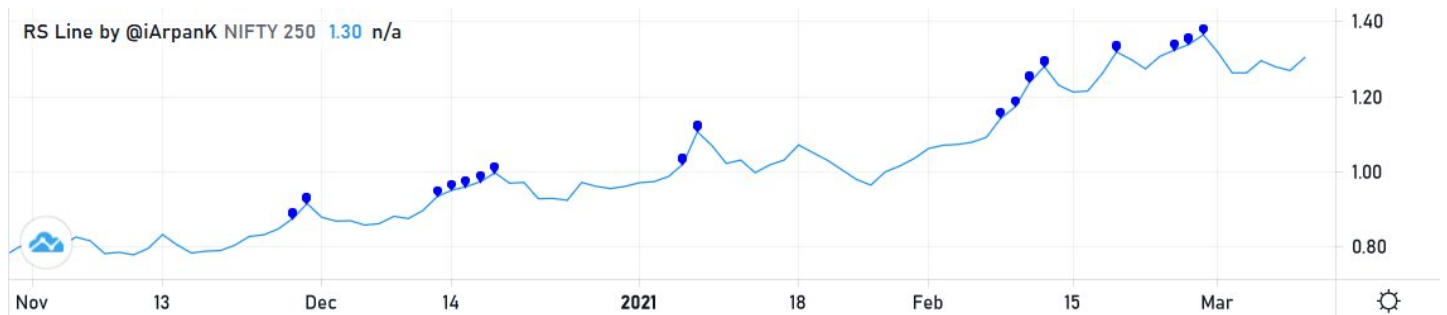
Arpan K.
[@iArpanK](#)



Many people ask me about Relative Strength (RS) line on my chart, and its utility. So, finally I've published a script on TradingView which lets you add this indicator to your chart!

■■■■■■■■■■ ■■■■■■■■■■ ■■■■■ ■■■ @■■■■■■■■■■ v1.0

Read full thread for steps



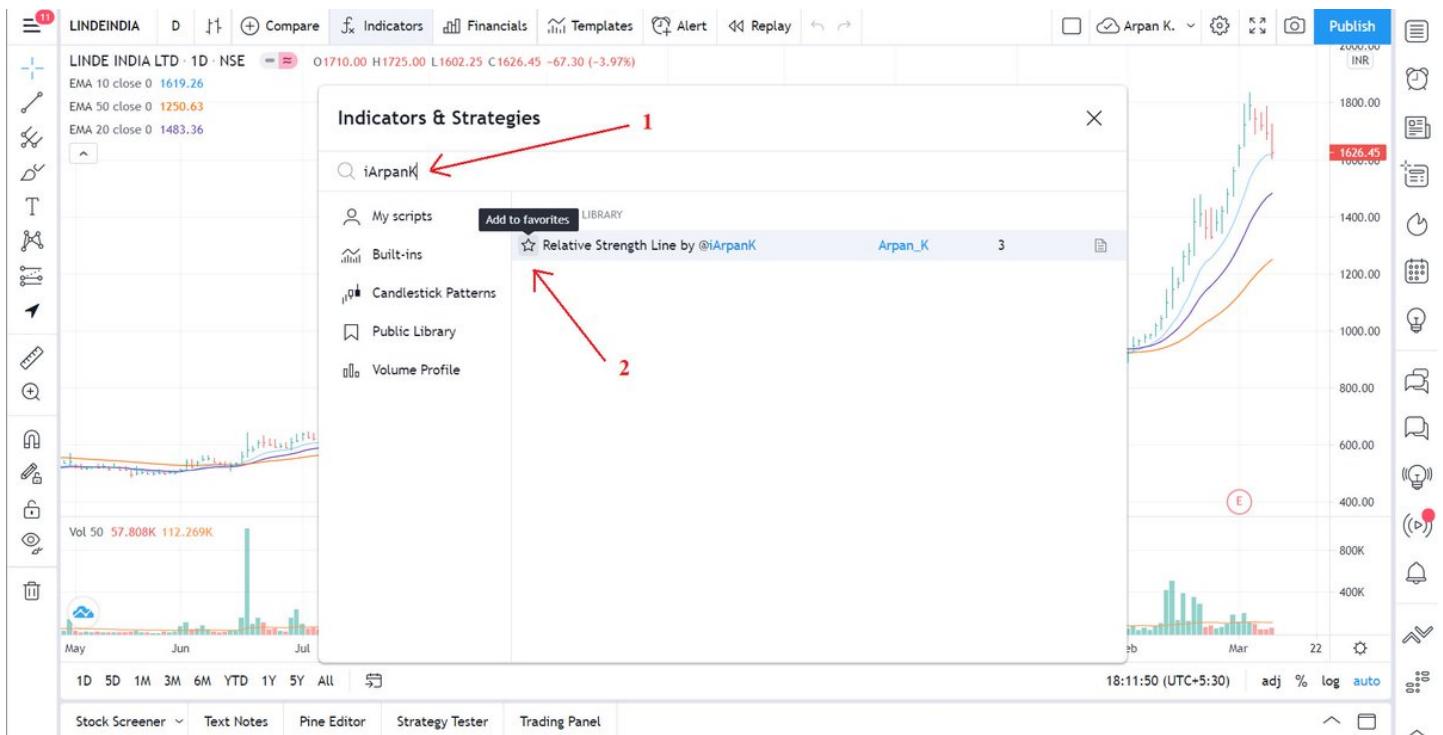
Step #1

Head to the indicators tab on top of your TradingView chart and search for the indicator name or my id - ■■■■■■■■■■

You'll find my indicator there.

Step #2

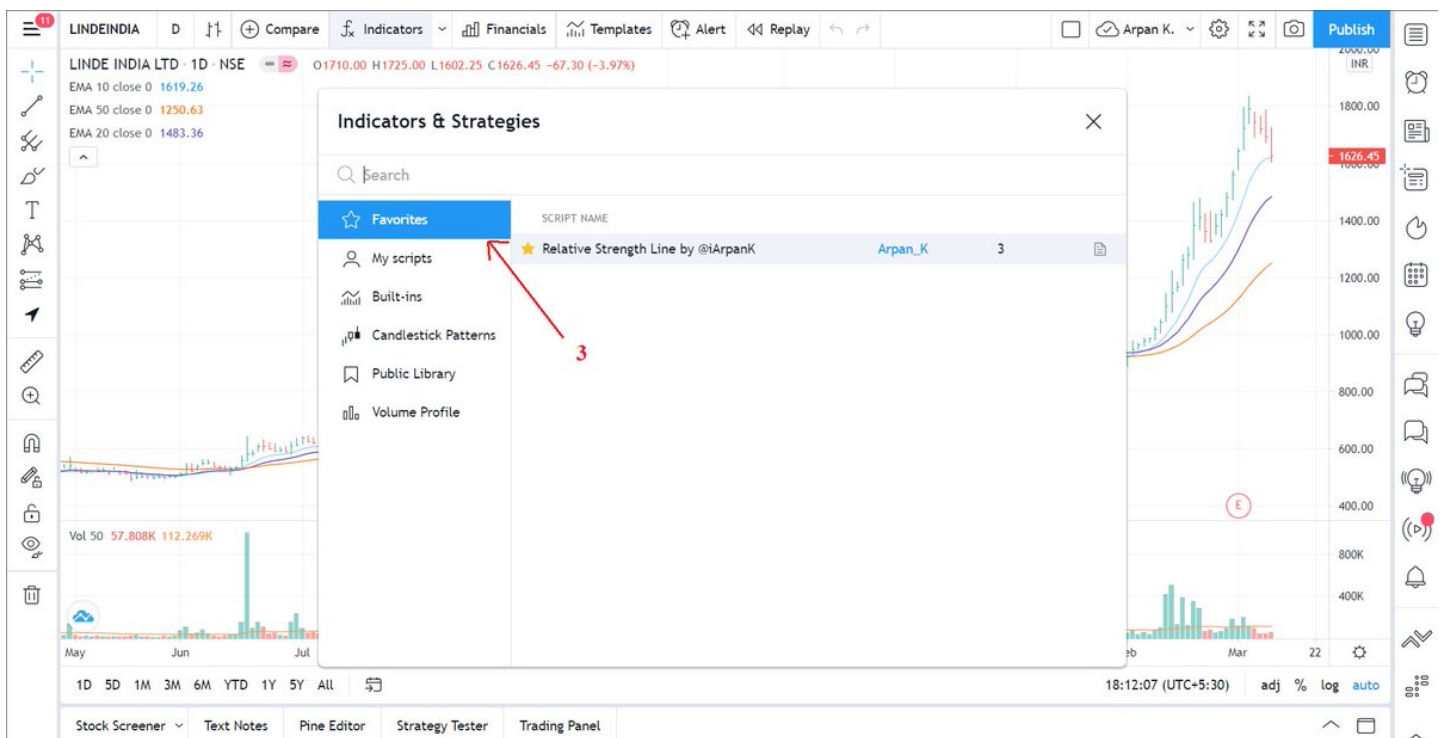
Click on 'Add to favorites' as shown in image below



Step #3

Go to the 'Favorites' section in the same dialog box, as shown in image below.

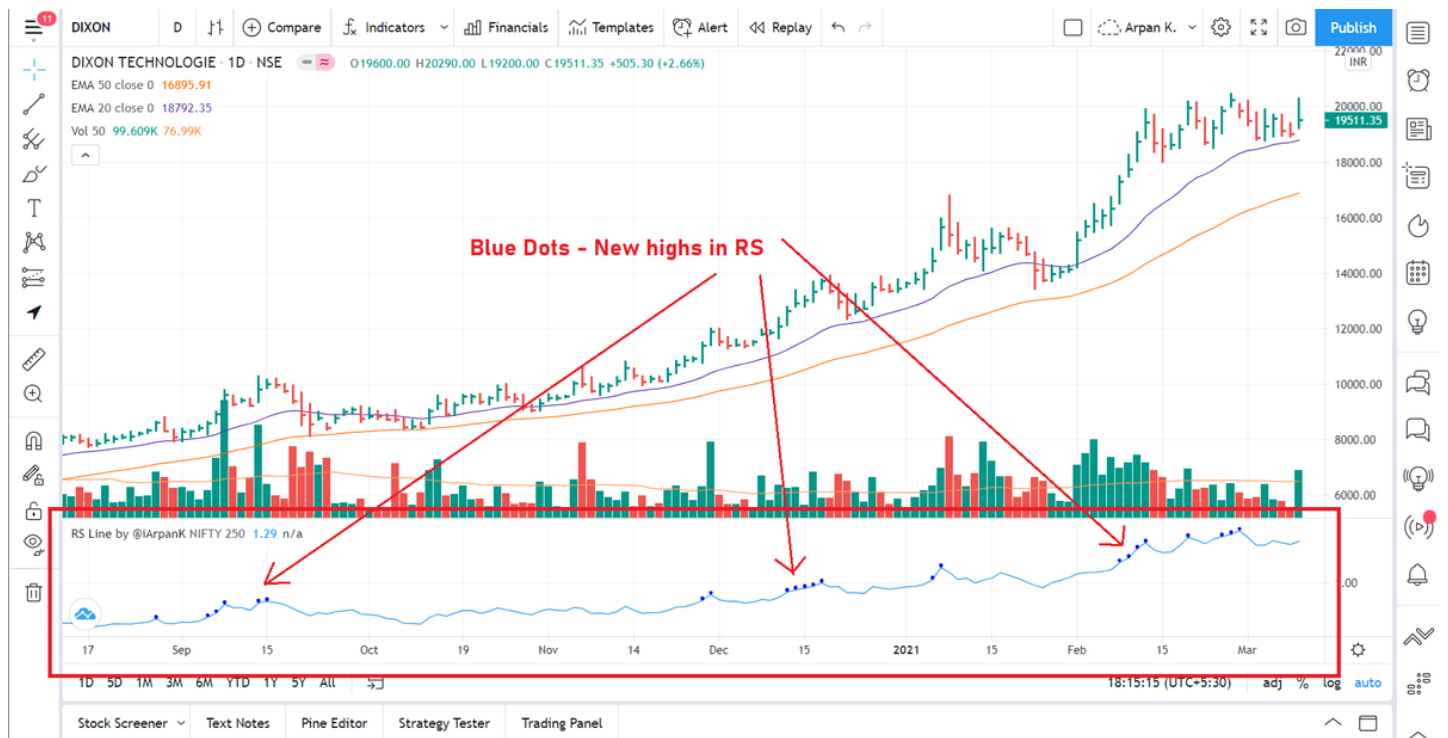
You'll find the indicator there. Now click on it and it gets added to your chart! Now you can access this indicator anytime from Indicators -> Favorites.



Finally, we have the RS line indicator on the bottom of the chart with blue dots denoting new highs in RS!

By default, blue dots show new 250 days high in RS (~1 year high)

But you can change the indicator period, colors, symbols by heading to the settings tab of the indicator.



You can check the full documentation of the script with complete user settings & usage details on <https://t.co/3q9UOn5GF7>

Use it in your day-to-day trading & let me know your experience :)

Please share for maximum traders' benefit!

[@BlogJulianKomar](#) [@LoneStockTrader](#) [@iManasArora](#) [@StocksNerd](#) [@swing_ka_sultan](#)

Thanks :)