

## Twitter Thread by ████████ ██████████



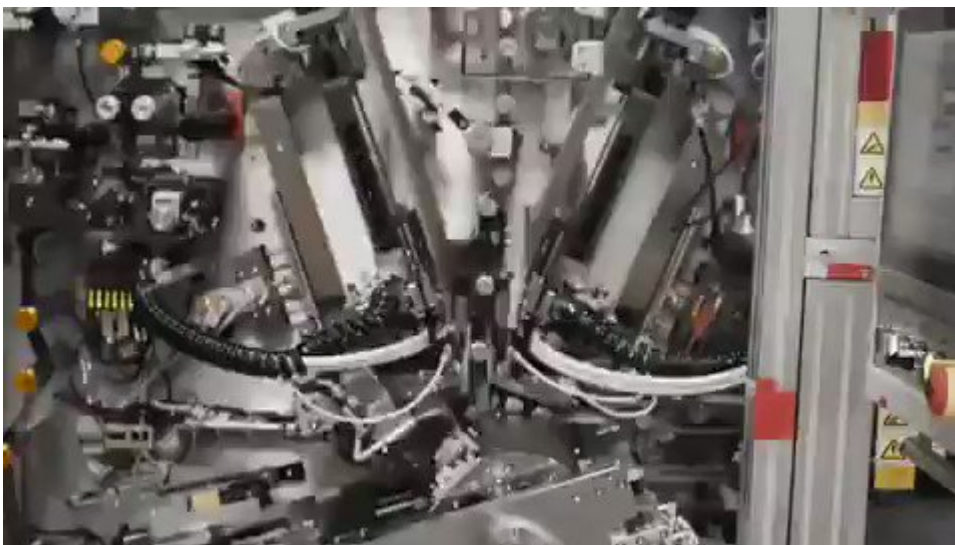
████████ ██████████

@truth\_tesla



**Tesla posted a new video about their secret Kato Road 4680 cell production lines a couple of days ago, and it contains a couple of technological gems I haven't seen widely mentioned elsewhere yet, so here's an attempt at listing these new disclosures.**

1/



2/

The first thing is that there appear to be no human workers/operators whatsoever in the main production process.

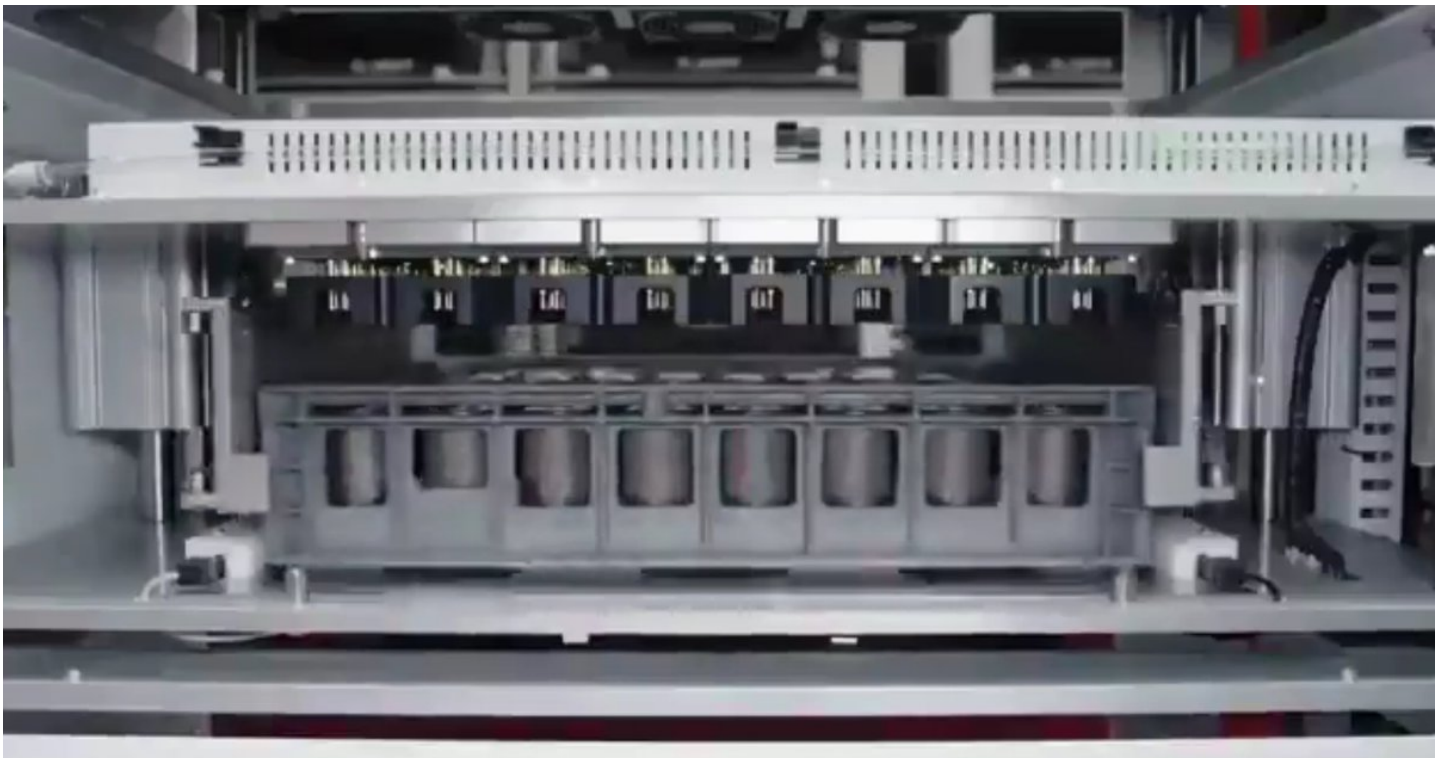
To the left is an image of line workers handling finished cells in a traditional facility. To the right is the 100% automated conveyance system Tesla has.



3/

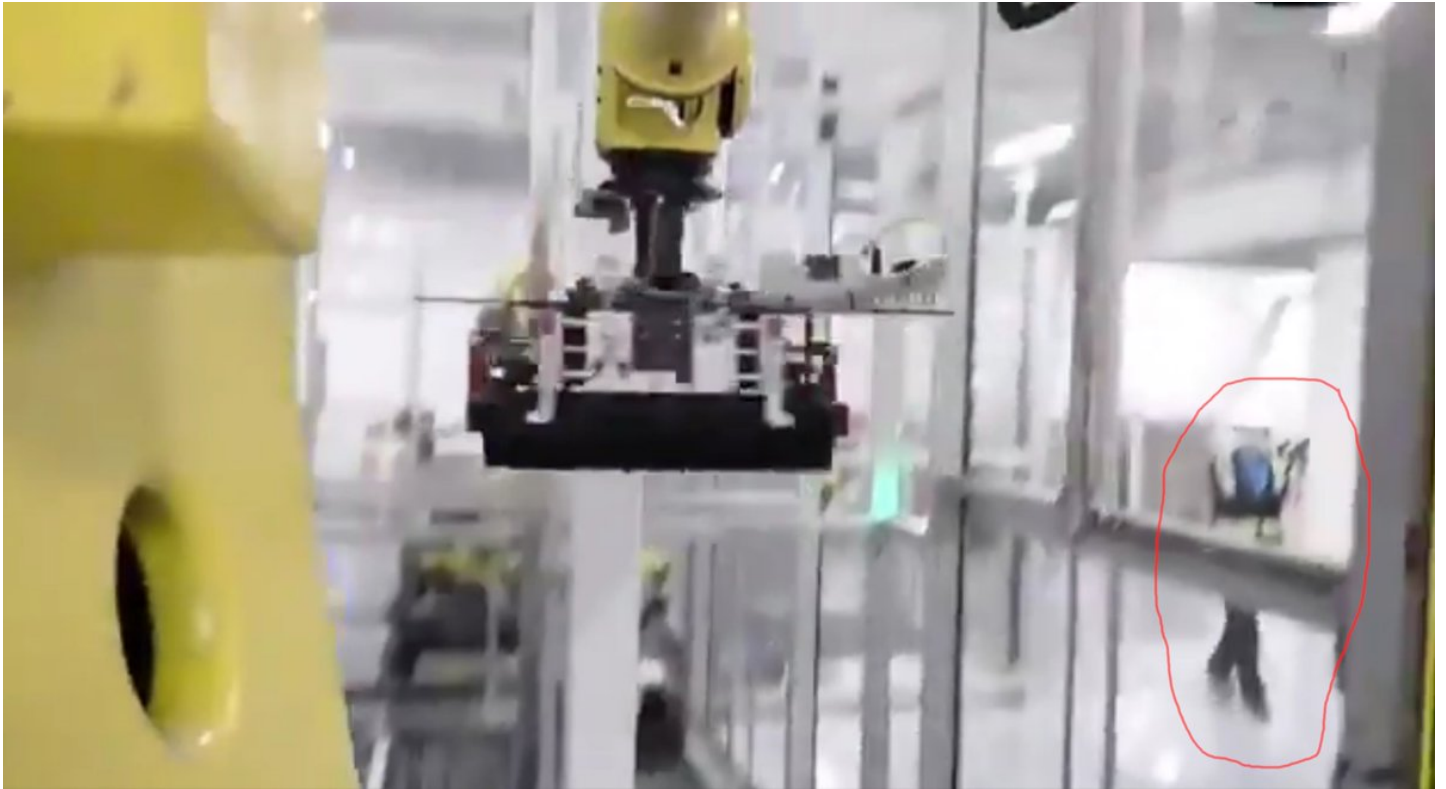
Here's how their 4680 cells are transported in racks of 8x8 cells: 64 cells each.

These standardized racks likely interface into automated pack production machines, made by Tesla Grohmann, or get directly integrated into the die-cast underbody (structural battery pack).



4/

There's an interesting detail in one of the frames: glimpse of a facility worker observing an industrial robot moving a rack.

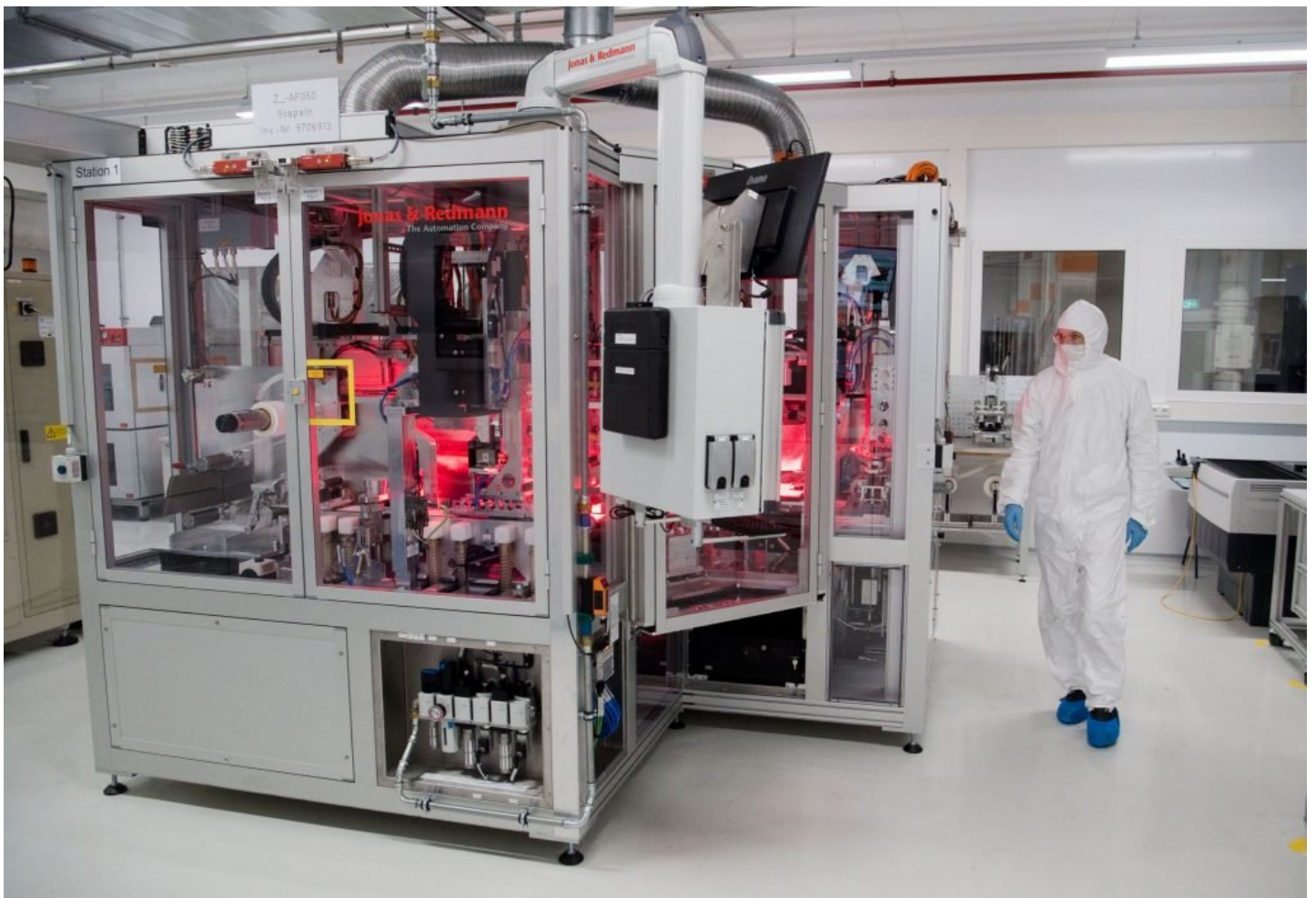


5/

What is interesting is that:

- Cell production facilities are Class 7 clean rooms, while the worker doesn't wear the usual "bunny suit" protective gear.
- There's a barrier between the worker and the robot: likely separating clean-room air from unprotected air.





6/

This suggests that much - maybe all - of the Kato Road production floor is in an isolated high grade clean-room with no human presence. Even finished cells are handled in what appear to be a clean-room environment.

Only maintenance would require humans to enter this space.

7/

The internal unit of handling finished cells appears to be a group of "4" cells in a single holder. A rack would have 16 of these.



8/

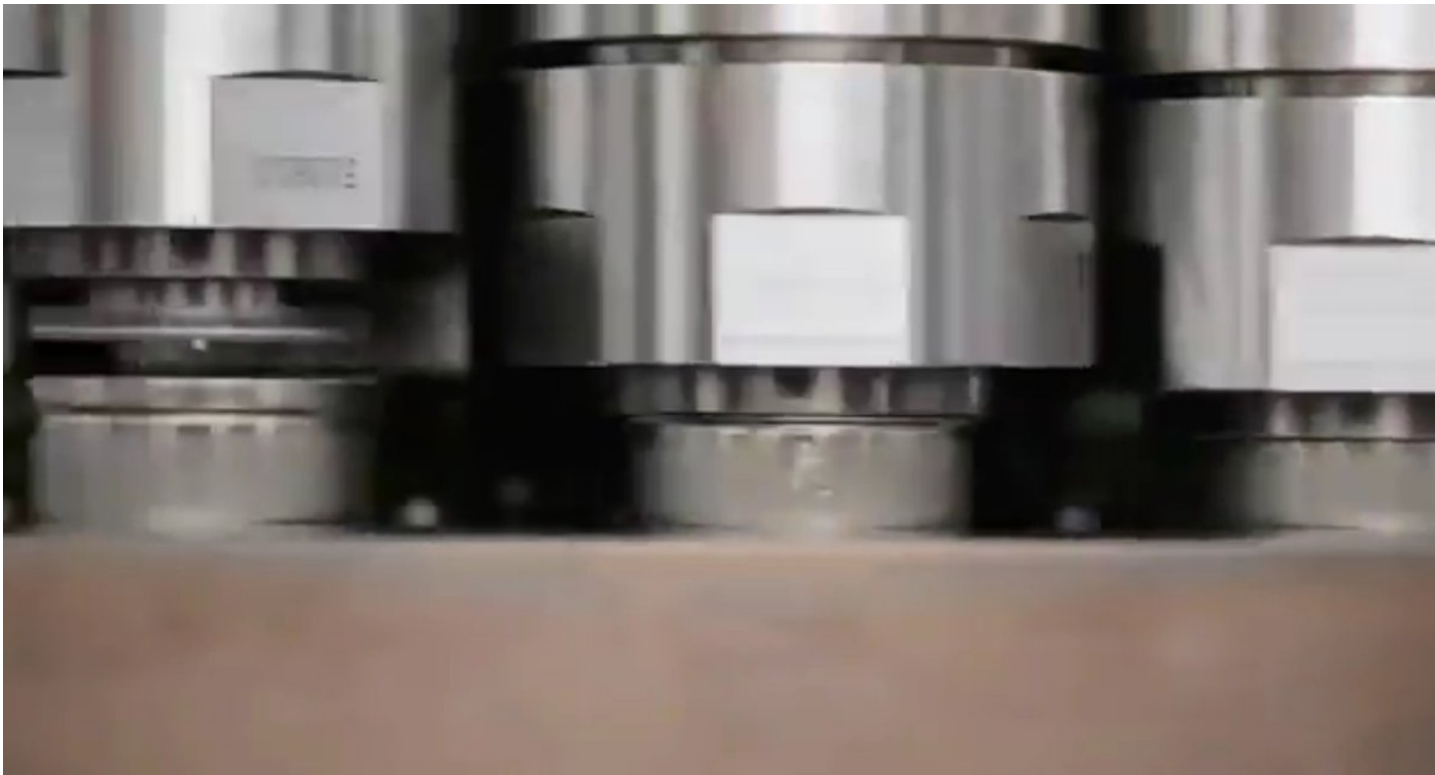
This large "wall" of Tesla labeled units appears to be high volume storage for 64-cell racks - possibly QA testing and initial formation (charging) of the cell.

Cell formation is usually done by third party equipment - but Tesla clearly uses their own equipment now.



9/

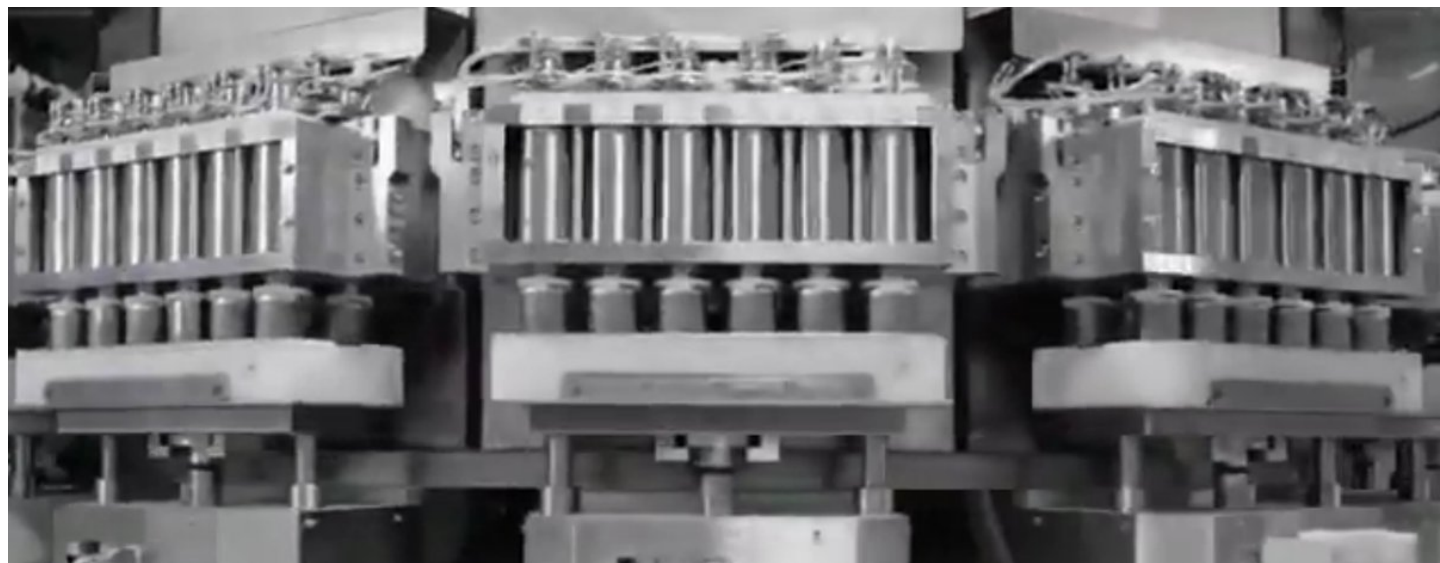
At 0:20 there appears to be rare footage of the "jelly roll" (inner roll of the cell) being carefully pressed into the "can", creating much of the final cell body.



10/

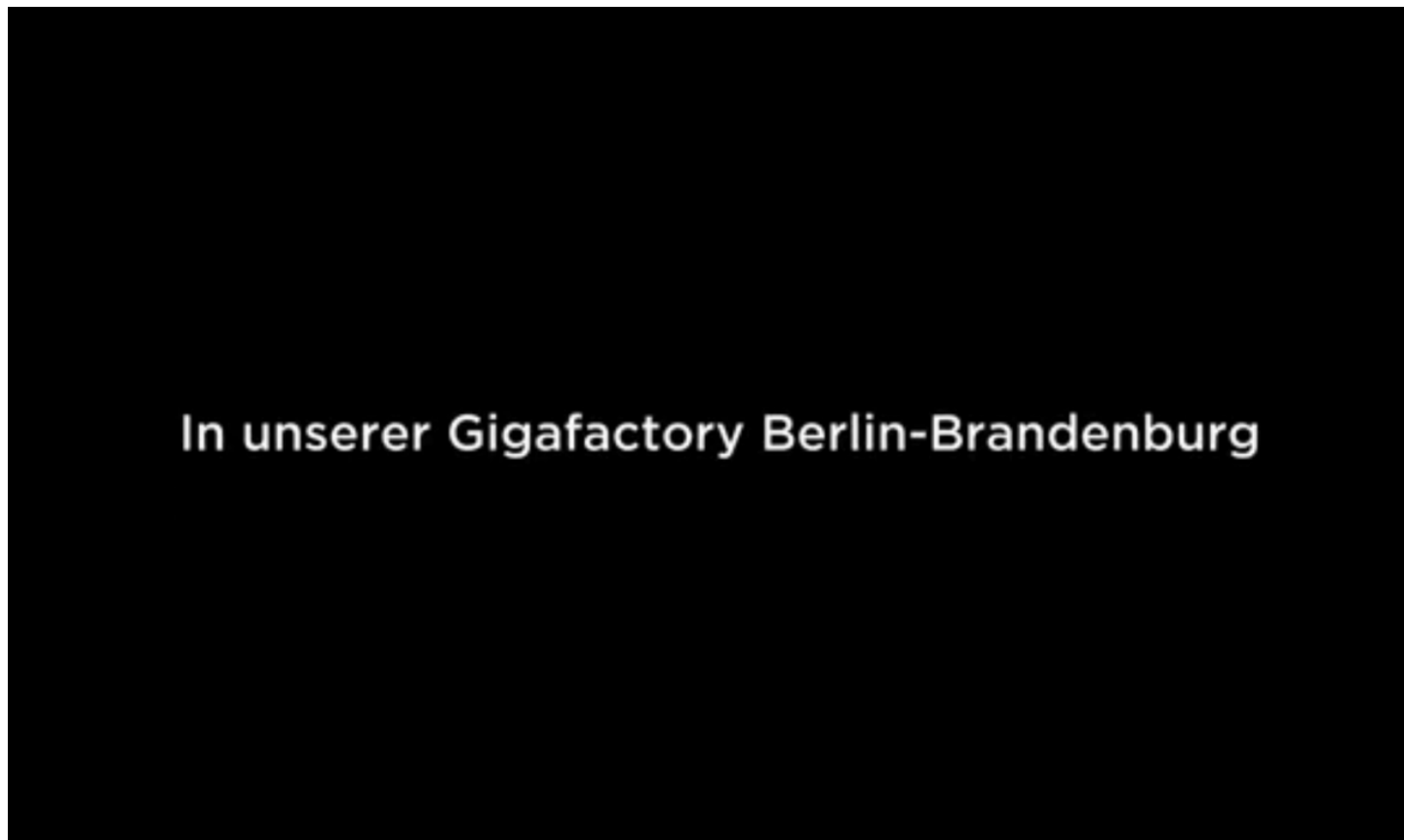
At 0:26 I think we see how the top of the cells get pressed to the bottom of the cell.

The famous "tab-less" picture on the right was disclosed on Battery Day. I believe Tesla is pressing the continuous metal surface of electrodes to the can surface, creating good contact.



11/

Tesla's goal with releasing this video was clearly recruitment - as can be seen in the final frames of the video. ■



12/

■■■;■■: this video IMO demonstrates that Tesla's Kato Road facility is a full scale cell production pilot line & factory that is far more ahead in commercializing & scaling their new cell technologies than the "R&D project" impression [@elonmusk](#) gave

