

## Twitter Thread by Learn to Trade

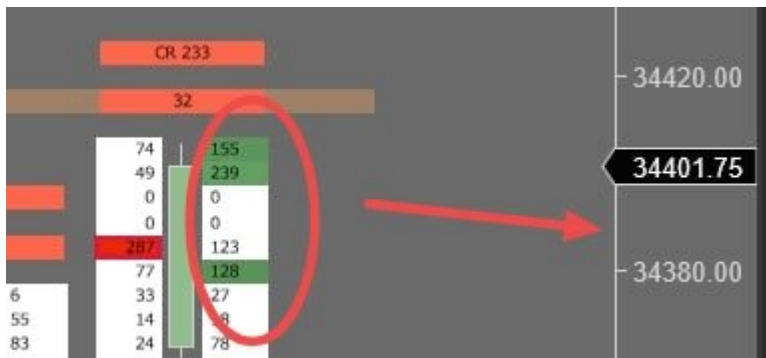


**Learn to Trade**

[@learntotrade365](#)



Retailers late sellers who place sl at visual reference levels are thrown out. Avoid placing sl at same location were retailers place stoploss <https://t.co/qctgpFYLnK>



This is the reason for retailers stoploss. Check it out \U0001f447 <https://t.co/fnHPgzCCVn> [pic.twitter.com/njvqgM9PI3](https://pic.twitter.com/njvqgM9PI3)

— Learn to Trade (@learntotrade365) [July 28, 2021](#)