

## Twitter Thread by [Kannan Gopinathan](#)



**[Kannan Gopinathan](#)**

[@naukarshah](#)



**ECI [@ECISVEEP](#), is it true that EVM-VVPAT is connected to an external device, SLU, through a 9 pin serial cable?**

**And SLU is connected to a laptop through a serial cable?**

**Then what about EVM-VVPAT are stand alone machines not connected to external devices claim [@SpokespersonECI](#)?**



## VVPAT

### LOADING SYMBOLS TO SYMBOL LOADING UNIT

Open the symbol loading application for M3 VVPAT in PC / Laptop. Select “Load VVPAT Sheet” and Select the constituency name and required details.

- (i) Connect Symbol Loading Unit to PC through the PC port marked on SLU with the 9 pin serial cable (BU cable).  
Select VVPAT M3 in the main menu of Symbol loading unit.  
Select “Load Symbols from PC” in the successive menu.  
Select the COM port and click on Load VVPAT slips in the application on PC/Laptop.

Wait for the Loading to get completed.

Bharat Electronics – Electronic Voting Machine (EVM)



## VVPAT

### LOADING SYMBOLS TO VVPAT

(a) Connect Symbol Loading Unit to VVPAT with the 9 pin serial cable (BU cable) through the M3 port marked on SLU.


(b) Keep the VVPAT selection switch (Above BU connector in back side of VVPAT) is in Position 1.

2. Switch on the Symbol loading unit. Select VVPAT M3 in the main menu of Symbol loading unit.  
Select “Load Symbols to VVPAT” in the successive menu.
3. Connect VVPAT to CU and switch on CU. At this stage, the VVPAT prints the total 7 Self-diagnostic slips.




Bharat Electronics – Electronic Voting Machine (EVM)



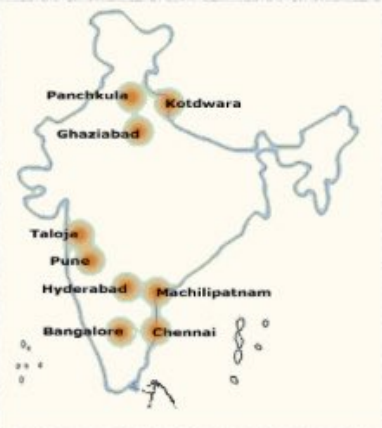
Now please don't get this also taken down @ECISVEEP. Why trouble the wayback machine? :)



# Bharat Electronics



[www.bel-india.in](http://www.bel-india.in)



# WELCOME

**Bharat Electronics – Electronic Voting Machine (EVM)**

⟨#⟩

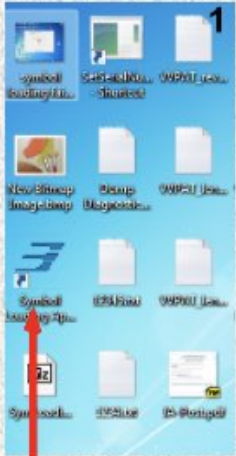
ECI @ECISVEEP can you share what is this symbol loading software on the laptop that needs to be opened to connect the Laptop, SLU/VVPAT?

Why publicly available EVM-VVPAT manuals on your site does not talk about any of this? @SpokespersonECI



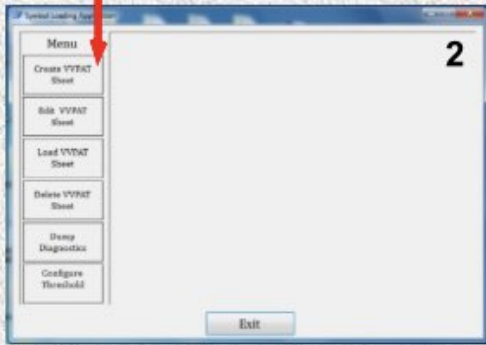
# VVPAT

## CREATION OF SYMBOLS

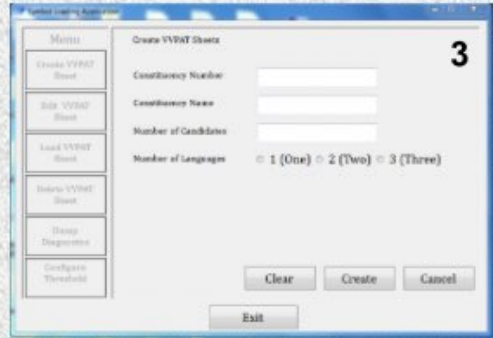


1

Create VVPAT Sheet



2



3

Open Symbol Loading Application

Enter the constituency number, constituency name and total number of candidates.

ECI @ECISVEEP, what are these poll sessions on VVPAT slips?

Does the VVPAT remembers sessions.

How it gets incremented with each power ONs?

Does it also have date/time info?

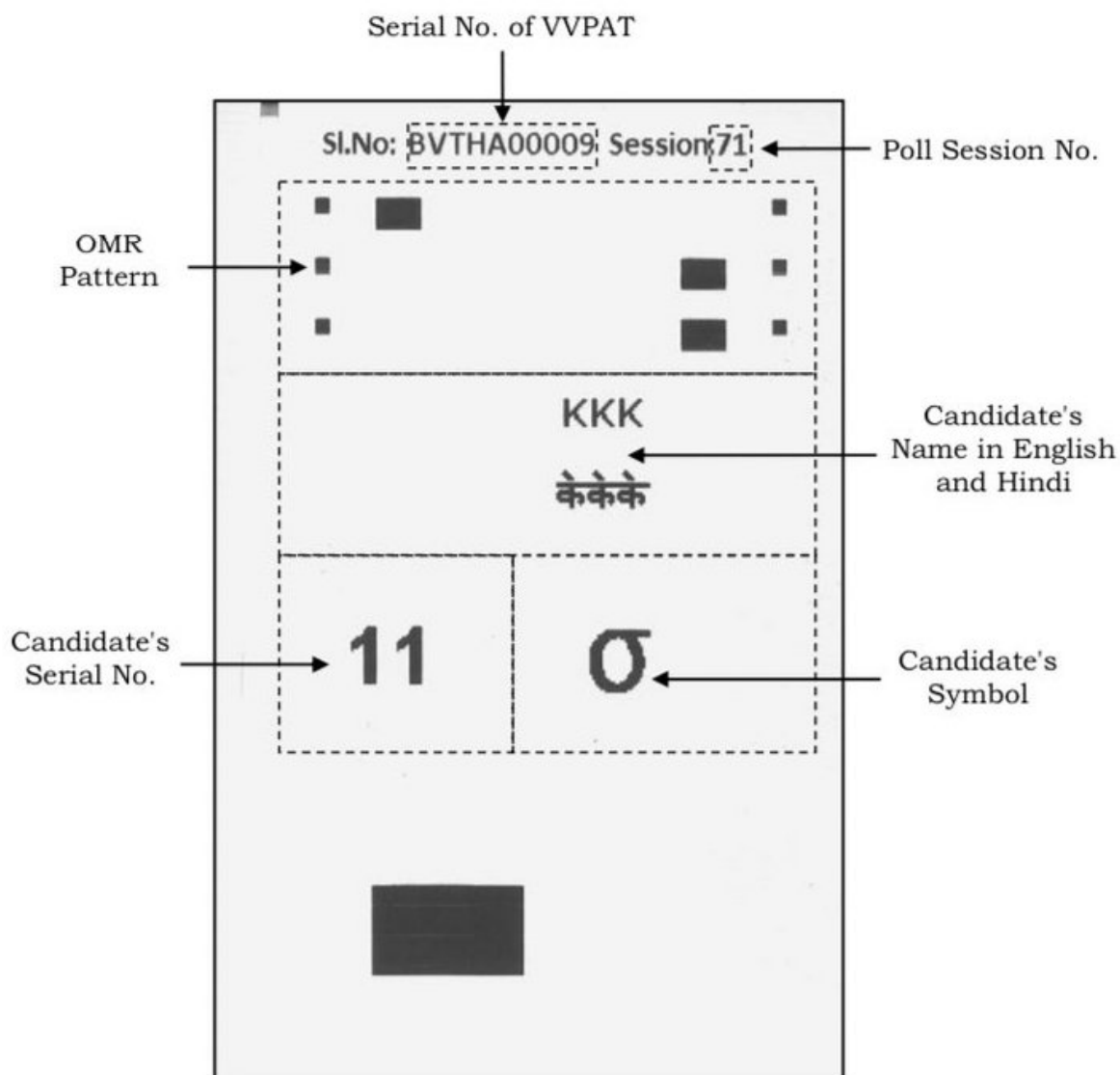
Won't it render the entire mock-poll process useless? @SpokespersonECI

<https://t.co/08YKZY0eqt>

## VVPAT - M3 CHARTS

### VVPAT - M3 CHARTS

#### VVPAT - M3 Ballot Slip Description



**Figure 7.1 - Detail Description of a Ballot Slip**

- (a) **OMR Pattern** : OMR Pattern may be used for automated Result counting of VVPAT - M3 ballot slips.
- (b) **Serial No. of VVPAT - M3 Unit** : Unique serial number of each VVPAT - M3 unit.
- (c) **Poll Session No.** : Poll session number starts from 0 to 99. With each power ON, it gets incremented by 1 (one). It is reset to 0 (zero) after uploading Ballot Paper symbols to VVPAT - M3 or after session number 99.