

Twitter Thread by [plaforscience](#)



[plaforscience](#)

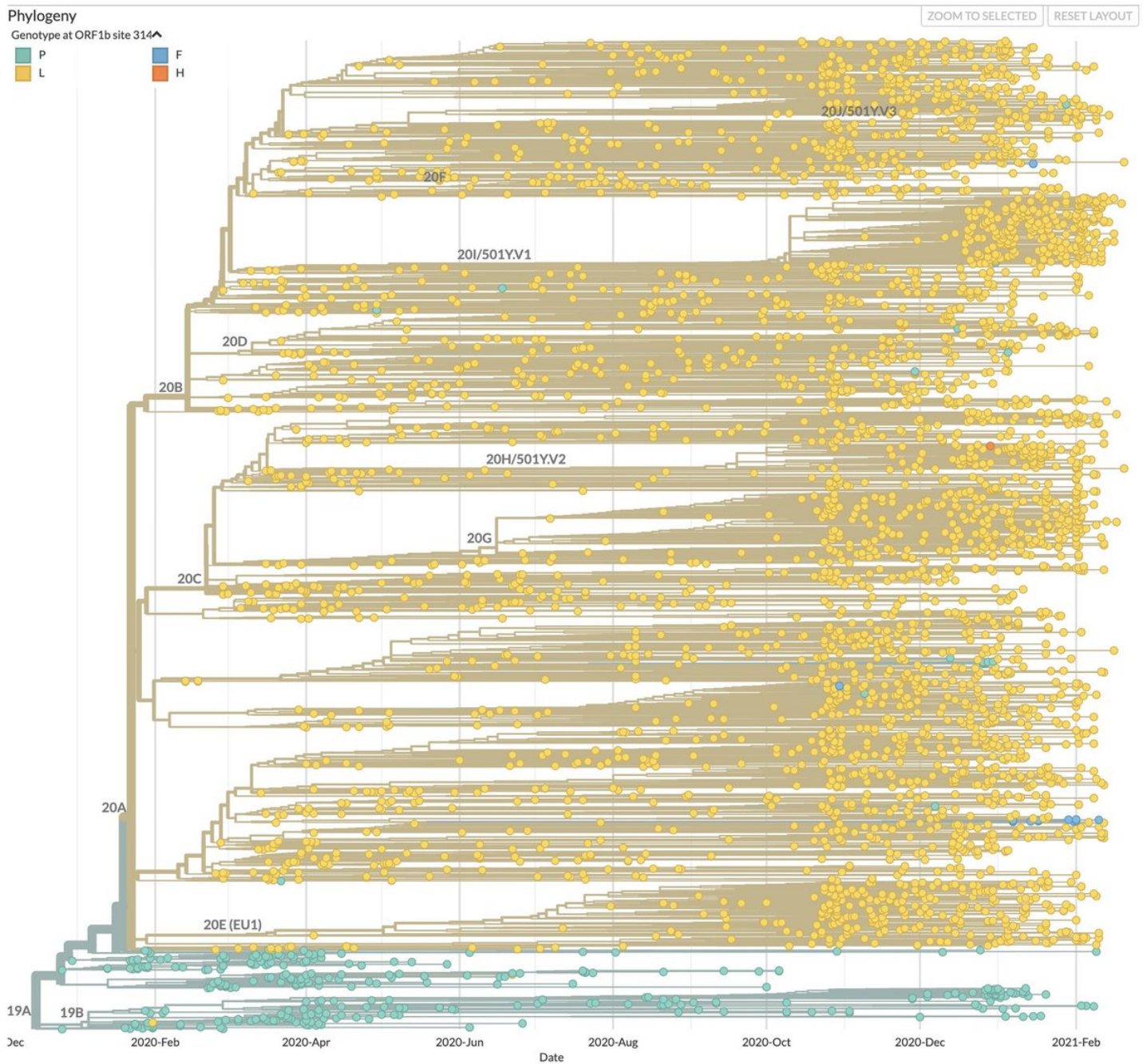
[@plaforscience](#)



Variants are the main pusher for fear of a imminent New Wave.

Observation of known mutations not only debunk the childish Variant Version, with few but famous new strains; but is ANOTHER strong proof of seasonality.

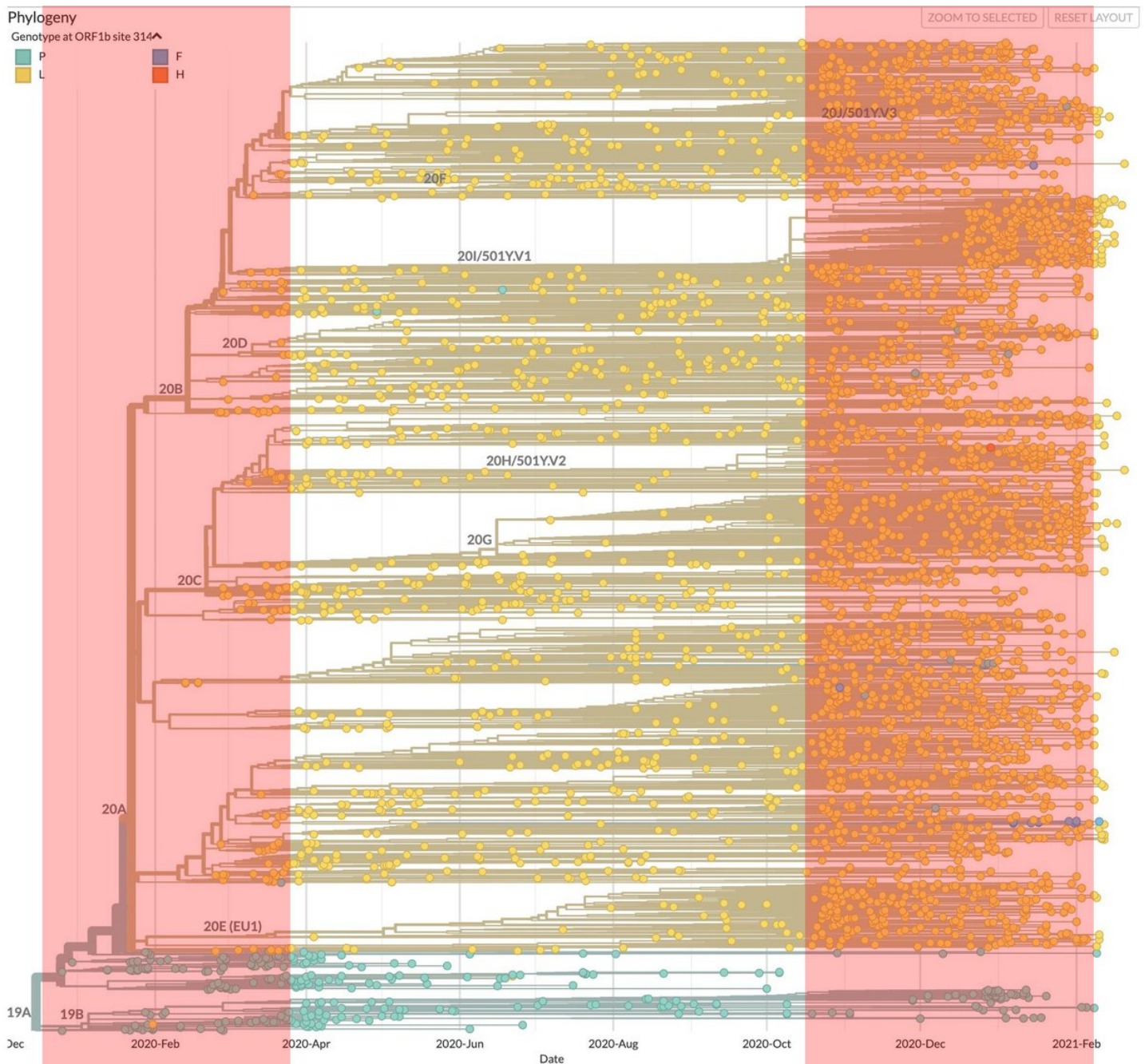
This is a timed map of mutations, let's observe it well.



Apart from the obvious fact of huge number of mutations, we can see two clear significant frames.

An initial phase, with quick detection of lots of separated branches, thus lots of mutations.

A frame with intense mutation density, with a MARKED line beginning from~early November.



Both directly correspond to winter.

Initial phase, with few genomic sequencing, detects the broad tree being created by frequent mutations, and the clear yellow dot purée of its developpe.

Of course mutations are proportional to transmission. More infections, more copy mistakes.

This is A GLOBAL map, so NO inference of the infinite panoply of restrictions in it.

Being this epidemic, & its measure, mainly a product of Northern hemisphere moderate climate countries, mutations reflect our seasonality.

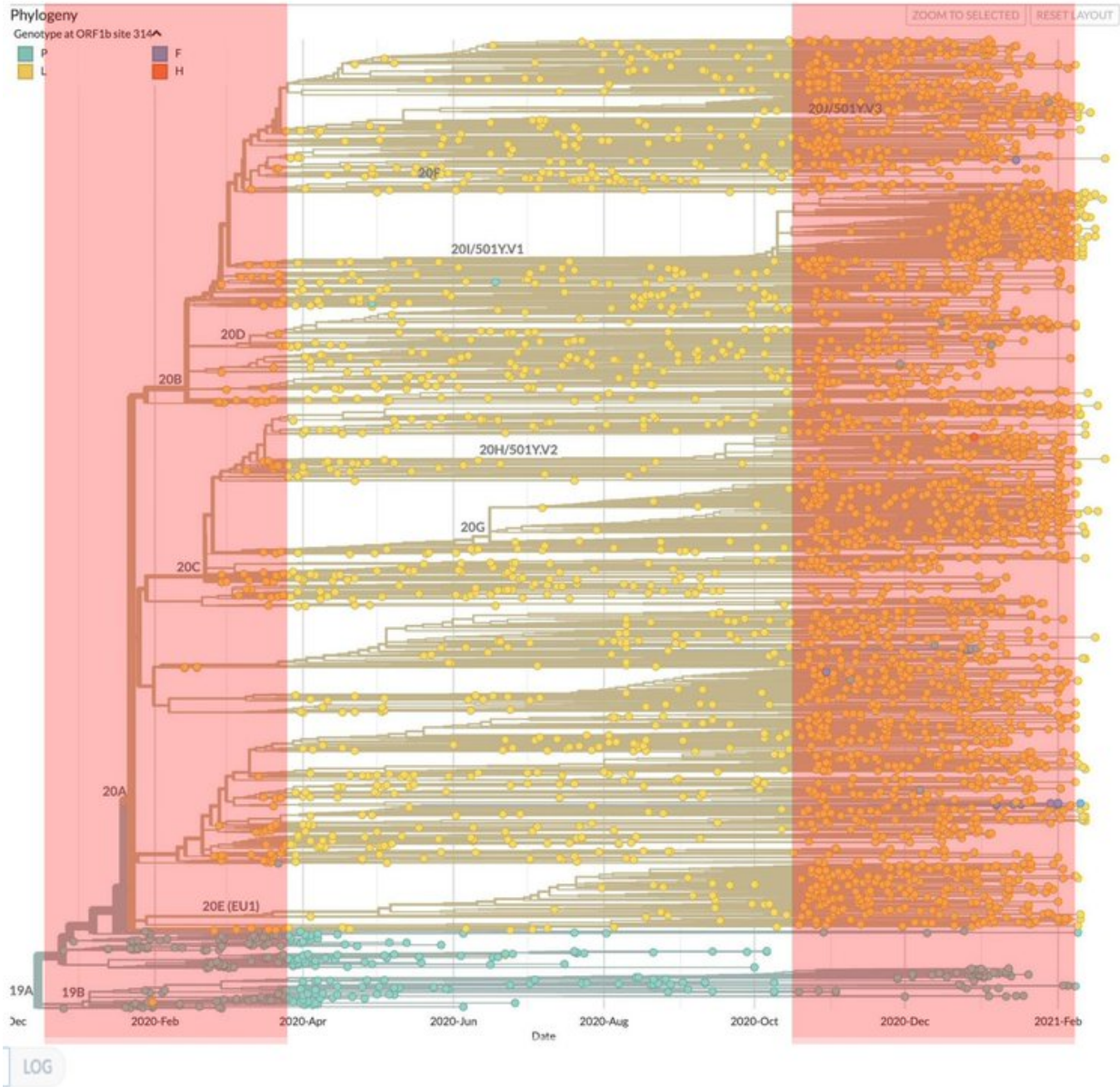
Tropical/South developpe is to blame for other splatter.

We have added the most reliable measure of Epidemic, deaths, correcting the ~21 infection/death lag.

Despite the 20/21 winter embarrassing death overestimate, seasonality is, again, evident in mutations' tree.

Currently, late frayed tendency points to the return of basal phase.

Mutations reflect seasonality



Europe daily deaths (-21 days)

I got the useful mutations with date thru Dr Eli David, so thanks.

<https://t.co/bpEsVo1udE>

Figure below shows thousands of Covid mutations so far (each point denotes a mutation).

Now stop panicking every time you hear of a "new mutation" with a country or city brand name.

<pic.twitter.com/dad3IROlr6>

— Dr. Eli David (@DrEliDavid) [February 27, 2021](#)