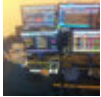


Twitter Thread by Pritesh Mehta



Pritesh Mehta

@PriteshFCB



Always follow the relative strength, especially in volatile mkts. Ratio of IT vs #Nifty is bouncing off 200-DMA, breakout is seen in standalone IT index. Breadth shows more than 90% components of IT are trading at 1-mnth high. #wipro #Infosys #mindtree #mphasis #IT #NIFTYFUTURE



Source: YES Sec - Research