

Twitter Thread by The_Chartist ■



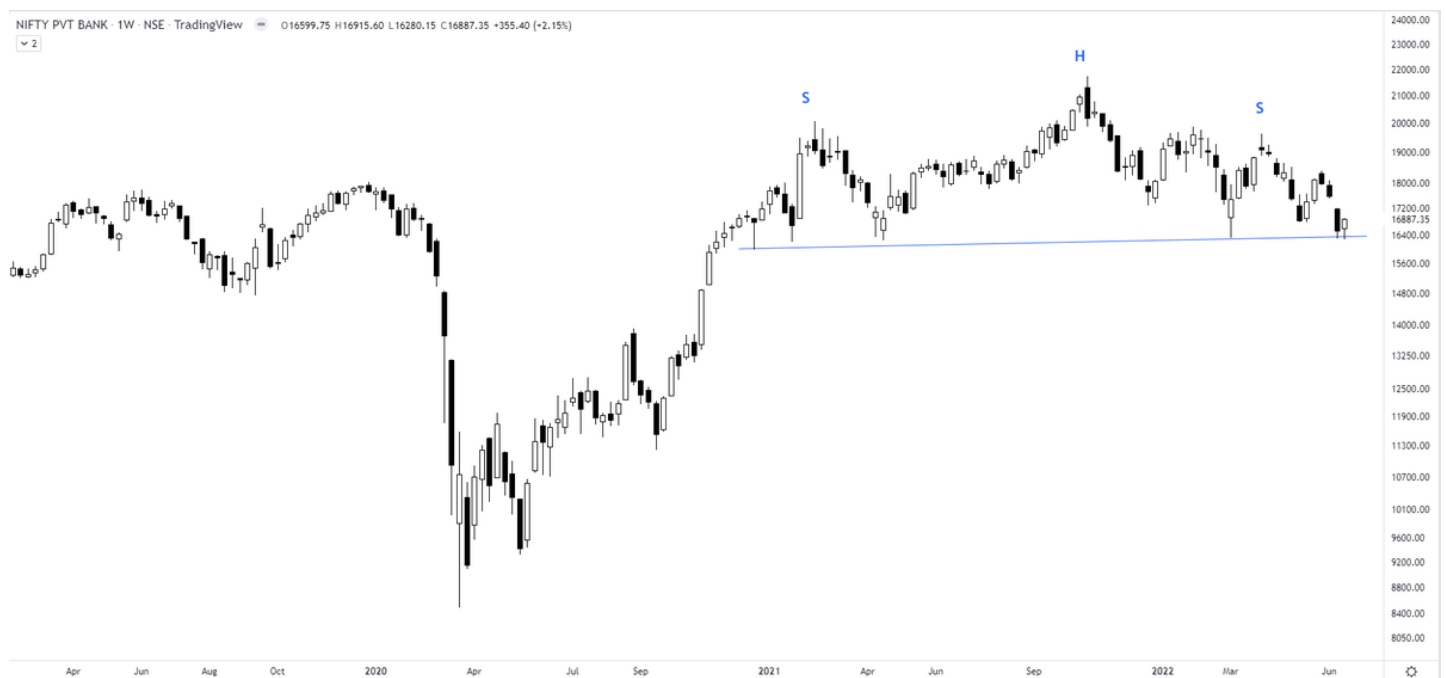
The_Chartist ■

[@charts_zone](#)



We still haven't got any signal of negation in the private banks' index & if the bearish H&S top has to be negated, the index has to move past 19950. Till then, it will be considered a minor pullback

Nifty Private Bank <https://t.co/BwG1DKhhLc>



I am watching a big bearish H&S top building up in Nifty Private Bank Index. Any breakdown will result in increased volatility in respective charts. For traders - definitely not a spot to be in. The index has to move beyond 19900 to negate the pattern. pic.twitter.com/IGFeyNrtQV

— The_Chartist \U0001f4c8 (@charts_zone) [June 19, 2022](#)