

Twitter Thread by Anand Luhar

Anand Luhar

@anand_luhar



#Weekend #homework

Will post few

#52W high or near #52W High ,

#ATH stock in this thread

#strength

#momentum

#Blacksmith #stocks to watch

@YouTube

#52W High Count

so we have 484

125 around list in 100-500 price stock which is quite higher side

17/07/2021

52 W High Stock List Counts

Price range INR	No of Stock	Percentage %	Cumulative	High to Low
@anand_luhar #Blacksmith Stocks				
0.01 to 0.99	2	0.41	0.41	100.00
1 to 4.99	59	12.19	12.60	99.59
5 to 9.99	41	8.47	21.07	87.40
10 to 19.99	58	11.98	33.06	78.93
20-29.99	24	4.96	38.02	66.94
30-49.99	36	7.44	45.45	61.98
50 to 99.99	64	13.22	58.68	54.55
100-499.99	125	25.83	84.50	41.32
500+	75	15.50	100.00	15.50
	484	100.00		

#Compare last week data was not given

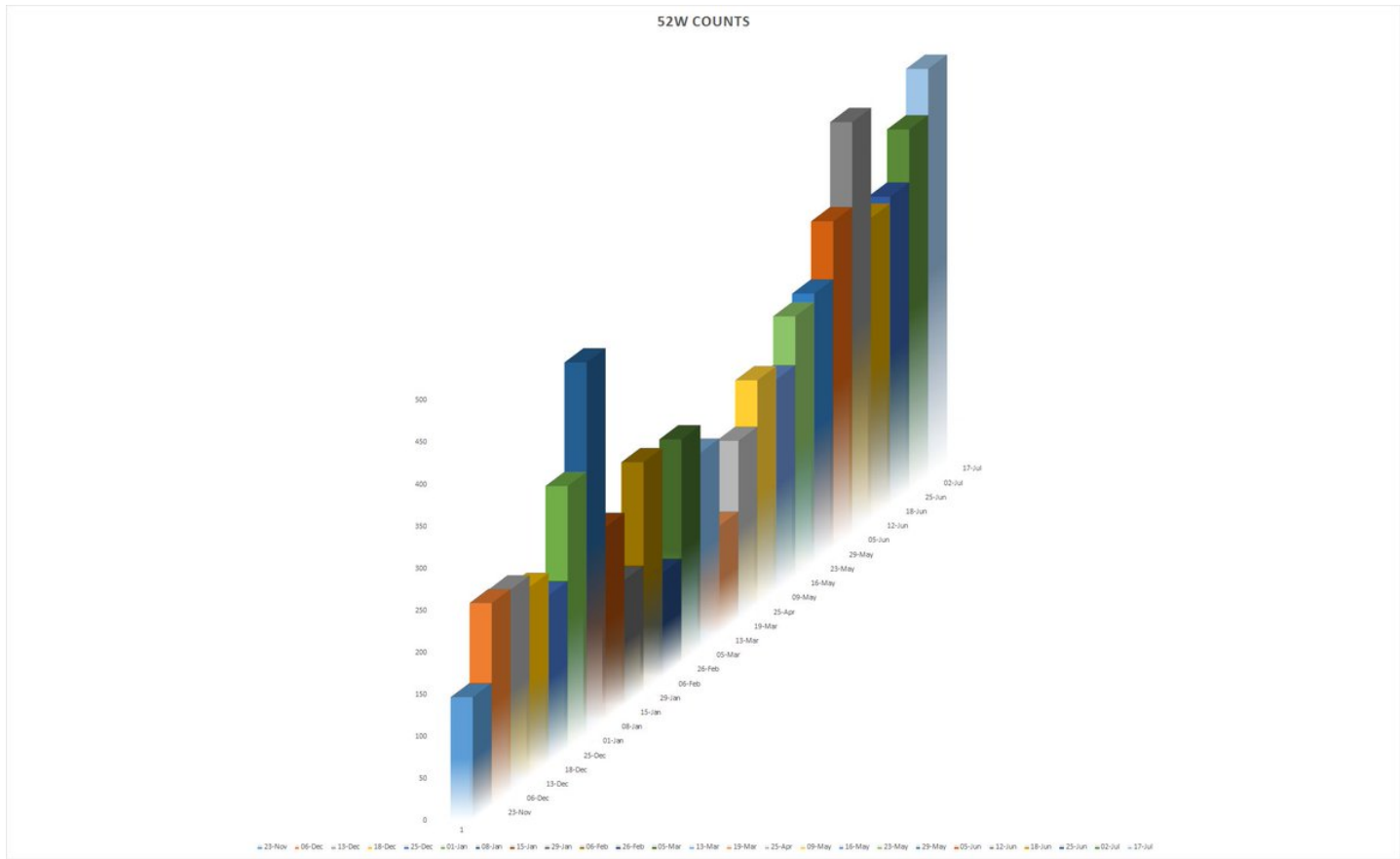
so comparing with previous saved data

and we see increase in stocks 55 stock more than last data and

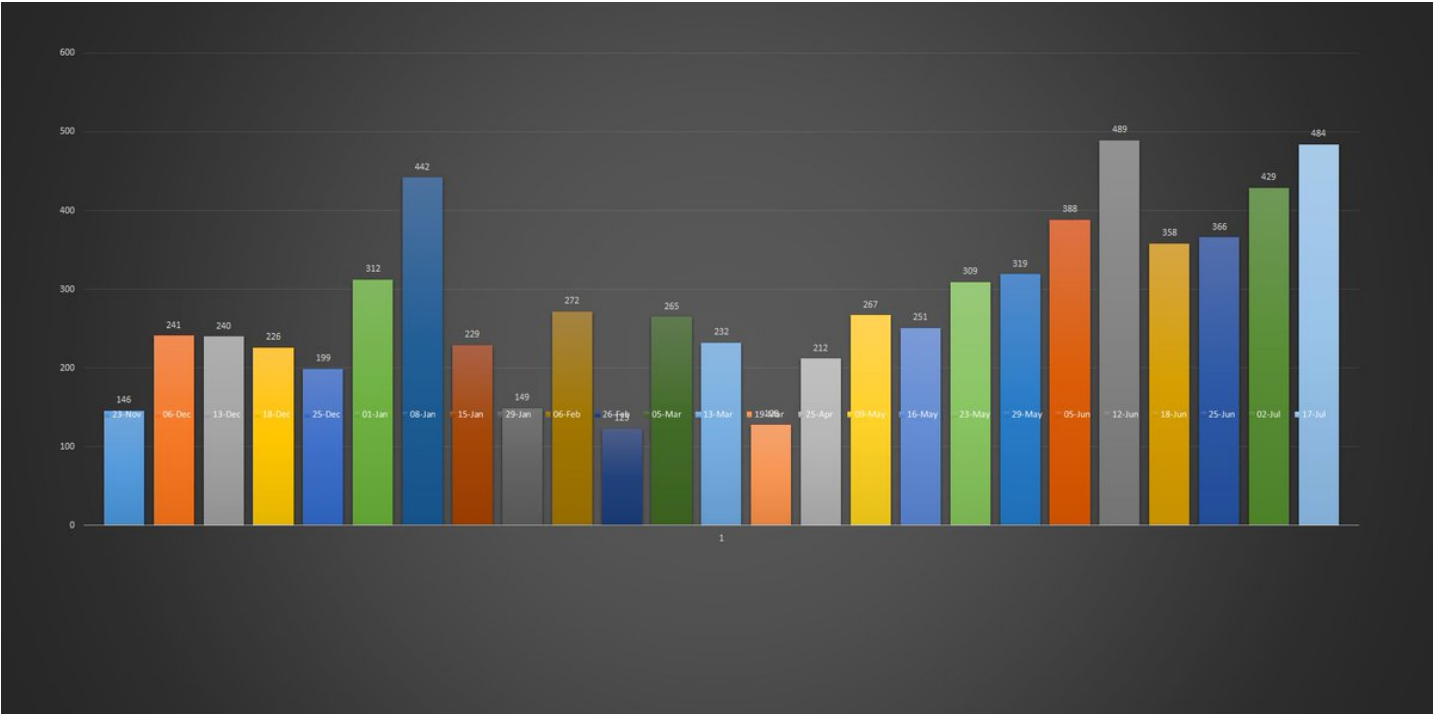
41% contribution by 100+ price stock now

52 W High Stock List Counts					52 W High Stock List Counts						
Price range INR	No of Stock	Percentage %	Cumulative	High to Low	Price range INR	No of Stock	Percentage %	Cumulative	High to Low		
@anand_luhar #Blacksmith Stocks					@anand_luhar #Blacksmith Stocks						
0.01 to 0.99	2	0.41	0.41	100.00	0.01 to 0.99	5	1.17	1.17	100.00	▼	-3
1 to 4.99	59	12.19	12.60	99.59	1 to 4.99	53	12.35	13.52	98.83	→	6
5 to 9.99	41	8.47	21.07	87.40	5 to 9.99	42	9.79	23.31	86.48	▼	-1
10 to 19.99	58	11.98	33.06	78.93	10 to 19.99	53	12.35	35.66	76.69	→	5
20-29.99	24	4.96	38.02	66.94	20-29.99	29	6.76	42.42	64.34	▼	-5
30-49.99	36	7.44	45.45	61.98	30-49.99	41	9.56	51.98	57.58	▼	-5
50 to 99.99	64	13.22	58.68	54.55	50 to 99.99	52	12.12	64.10	48.02	▲	12
100-499.99	125	25.83	84.50	41.32	100-499.99	88	20.51	84.62	35.90	▲	37
500+	75	15.50	100.00	15.50	500+	66	15.38	100.00	15.38	→	9
	484	100.00				429	100.00			▲	55

#Trend



#GRAPHS



#MASTEK

Covered earlier and now coming of consolidation
 so 2372 hold then next level 2624/2715 to watch out
 IT is moving well

EMA (200, close, 0)
EMA (50, close, 0)

