

## Twitter Thread by **Irish Born Investor**

**Irish Born Investor**

@BornInvestor



Sharing, what I think, are some useful layouts for  
@tradingview

**Market Analysis:** I use this as a short-term breadth indicator. Clean chart with %  
Stocks Above Below MAs Indicator below. Indicator can be moved to any MA and  
also between SPX, QQQ etc.

<https://t.co/sDMNov2U60>

Irishborninvestor published on TradingView.com, Dec 23, 2022 10:02 UTC

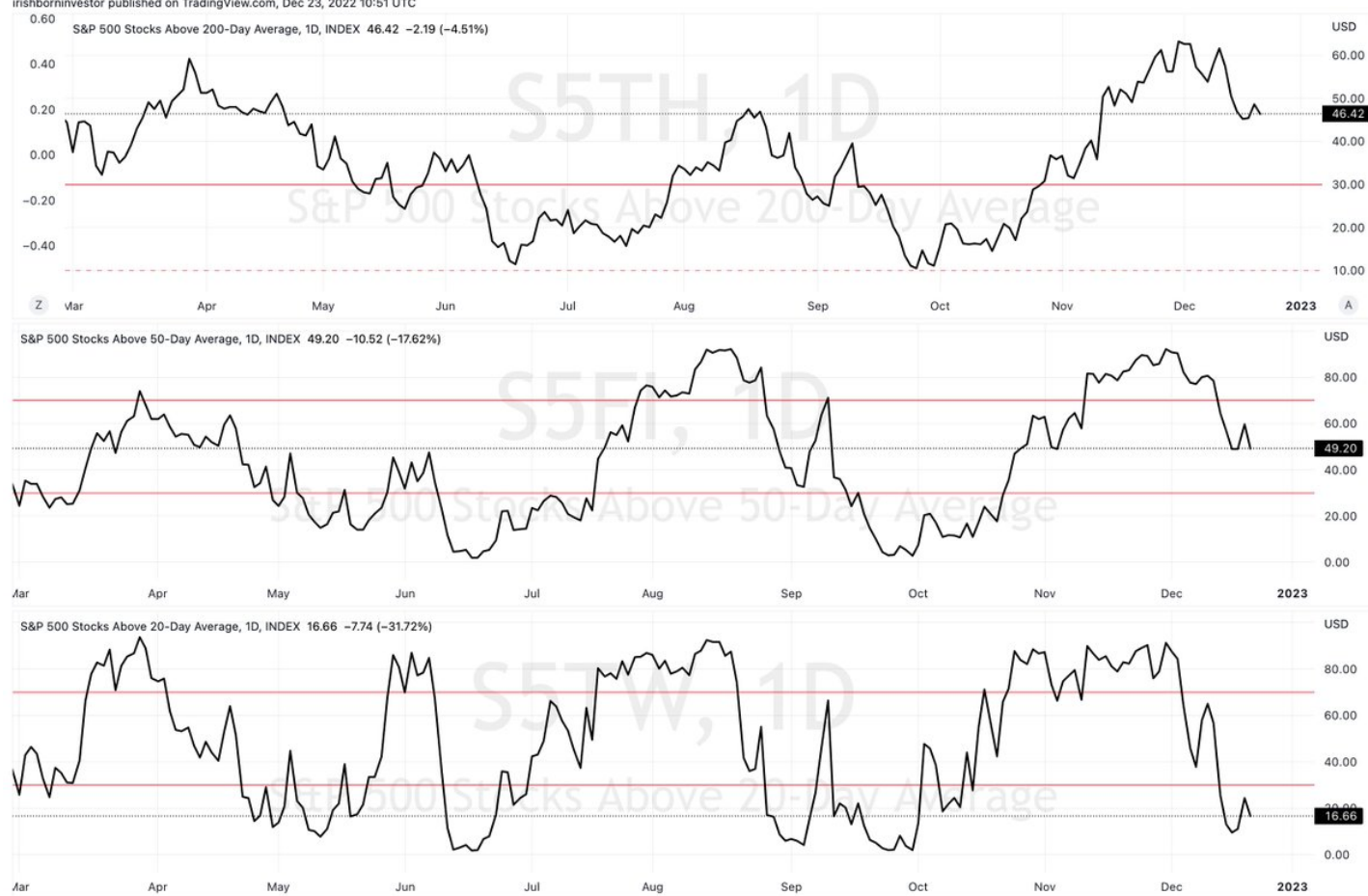


TV TradingView

## \$SPX Stocks above 20,50 & 200 MA

<https://t.co/K8G9KzyizA>

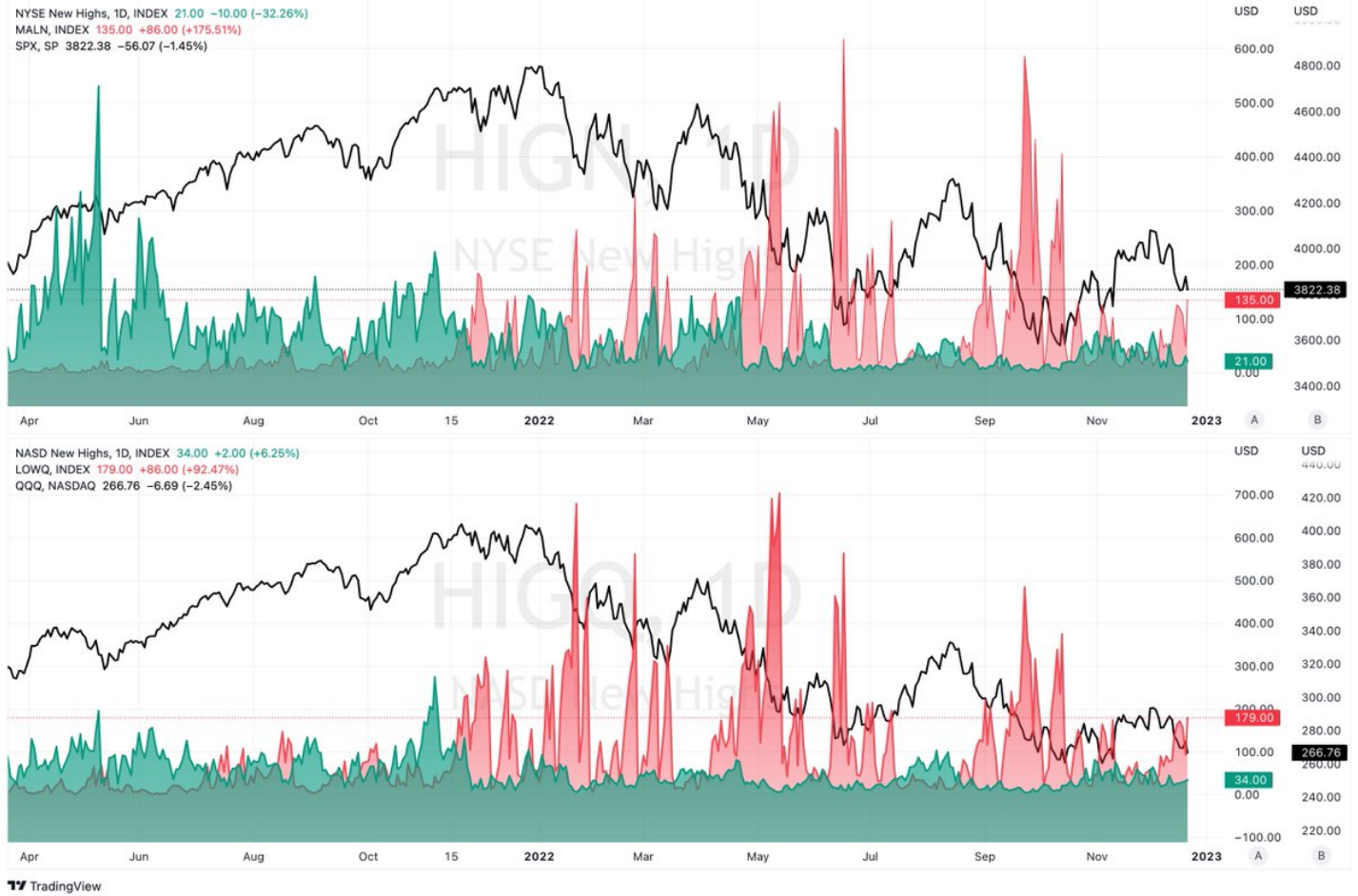
Irishborninvestor published on TradingView.com, Dec 23, 2022 10:51 UTC



TV TradingView

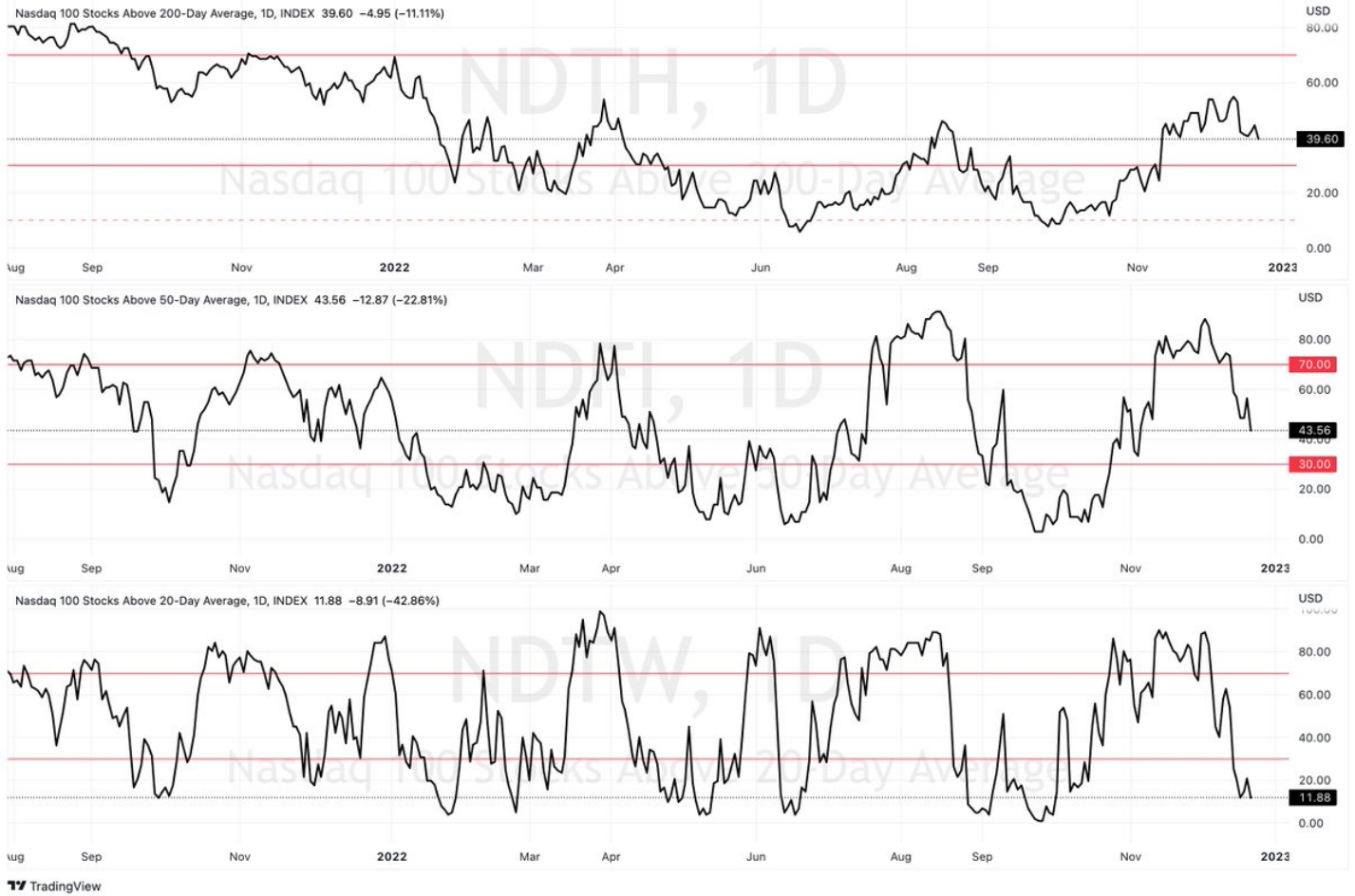
New Highs vs Lows: New Highs vs Lows in the Market. If you compare the new lows emerging with major tops in the market you can see warning signs emerge. <https://t.co/25n3nBPBSB>

irishborninvestor published on TradingView.com, Dec 23, 2022 10:19 UTC



\$QQQ Stocks above 20, 50 & 200 MA <https://t.co/0geRTmSXn1>

irishborninvestor published on TradingView.com, Dec 23, 2022 10:51 UTC



Finally, here is my standard trading layout h/t to [@taplot](#) as I shamelessly emulated his layout and use many of the scripts that he generously released.  
<https://t.co/EzHDMvaztS>



If you find these helpful then give them a like and a retweet. Thanks. All are freely available indicators on [@tradingview](#) platform.

