

Twitter Thread by Mr. Chartist



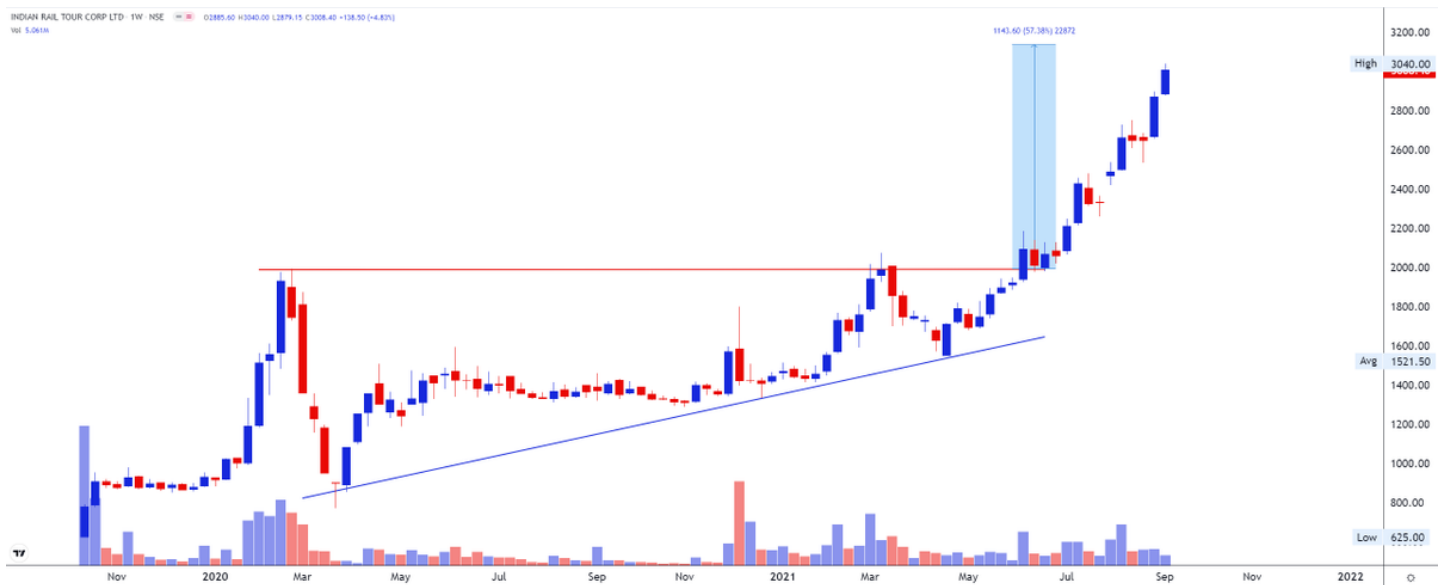
Mr. Chartist

[@Mr_Chartist](#)



NSE:IRCTC 3040

1. Still 200/400 point movement left as per Ascending Triangle Pattern.
2. Stock perfectly moved according to the classic pattern.
3. Next level to watch now 3500-4000
4. Support near 2600-2800 <https://t.co/VrUhS85Rml>



NSE:IRCTC 1775 +2.78%

- Cup and Handle breakout
- Support at 1600/1650
- Next levels at 1900/2000/2100++[#TA](#) pic.twitter.com/LxpPTI0rB6

— Mr. Chartist (@Mr_Chartist) [February 26, 2021](#)