

## Twitter Thread by foone



**foone**  
@Foone



### WHO STOLE MY DISK SECTOR

Directory listing (partial):

File Name	Size	Type	Date/Time
System file	26,936	System file	5/31/1994 6:22:00 AM
TX_File	5,241	Application	5/31/1994 6:22:00 AM
Application	15,718	Application	5/31/1994 6:22:00 AM
Application	79,065	Application	5/31/1994 6:22:00 AM
HL_File	1,784	Configuration settings	5/31/1994 6:22:00 AM
Configuration settings	14	Binary Art File	5/31/1994 6:22:00 AM
MS-DOS Application	13	CP_File	5/31/1994 6:22:00 AM
CP_File	40		5/31/1994 6:22:00 AM
MS-DOS Application	15,750		5/31/1994 6:22:00 AM
System file	34,598		5/31/1994 6:22:00 AM
SY_File	11,759		5/31/1994 6:22:00 AM
EX_File	19,512		5/31/1994 6:22:00 AM

Error Message:

**Error**

Disk error on track 75, head 1  
Sector not found  
The disk media is not recognized. It may not be formatted.

Buttons: Abort, Retry, Ignore

this is a different disk.

did two disks on my desk go bad at the same time? or is this USB drive A USELESS FAILURE?



# Microsoft MS-DOS 6.22 Setup

Welcome to Setup.

The Setup program prepares MS-DOS 6.22 to run on your computer.

- To set up MS-DOS now, press ENTER.
- To learn more about Setup before continuing, press F1.
- To exit Setup without installing MS-DOS, press F3.

Note: If you have not backed up your files recently, you might want to do so before installing MS-DOS. To back up your files, press F3 to quit Setup now. Then, back up your files by using a backup program.

To continue Setup, press ENTER.

ENTER=Continue F1=Help F3=Exit F5=Remove Color F7=Install to a Floppy Disk

dang it. after all that time installing it, it can't boot.

it doesn't even fail to boot, it just hangs at boot

some stupid problem with partitioning/mbr, probably

yup. boot disk, fdisk /mbr, and now it boots fine.

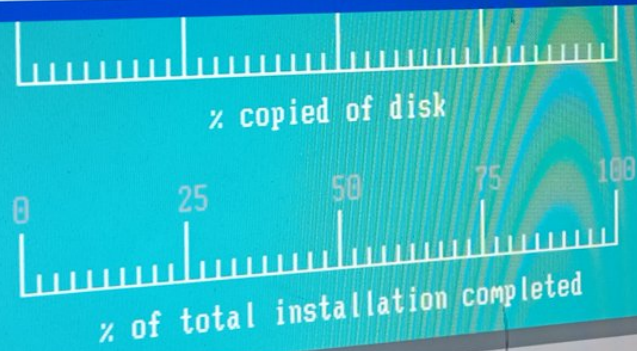
now I can get some REAL work done.

DOOM v1.8  
by id Software, inc.  
Copyright (C) 1993-94

SHAREWARE VERSION  
PLEASE DISTRIBUTE!

Call 1-800-idgames to register.

Which drive to install to? (example: 'C'):  
Press ESC to quit program.

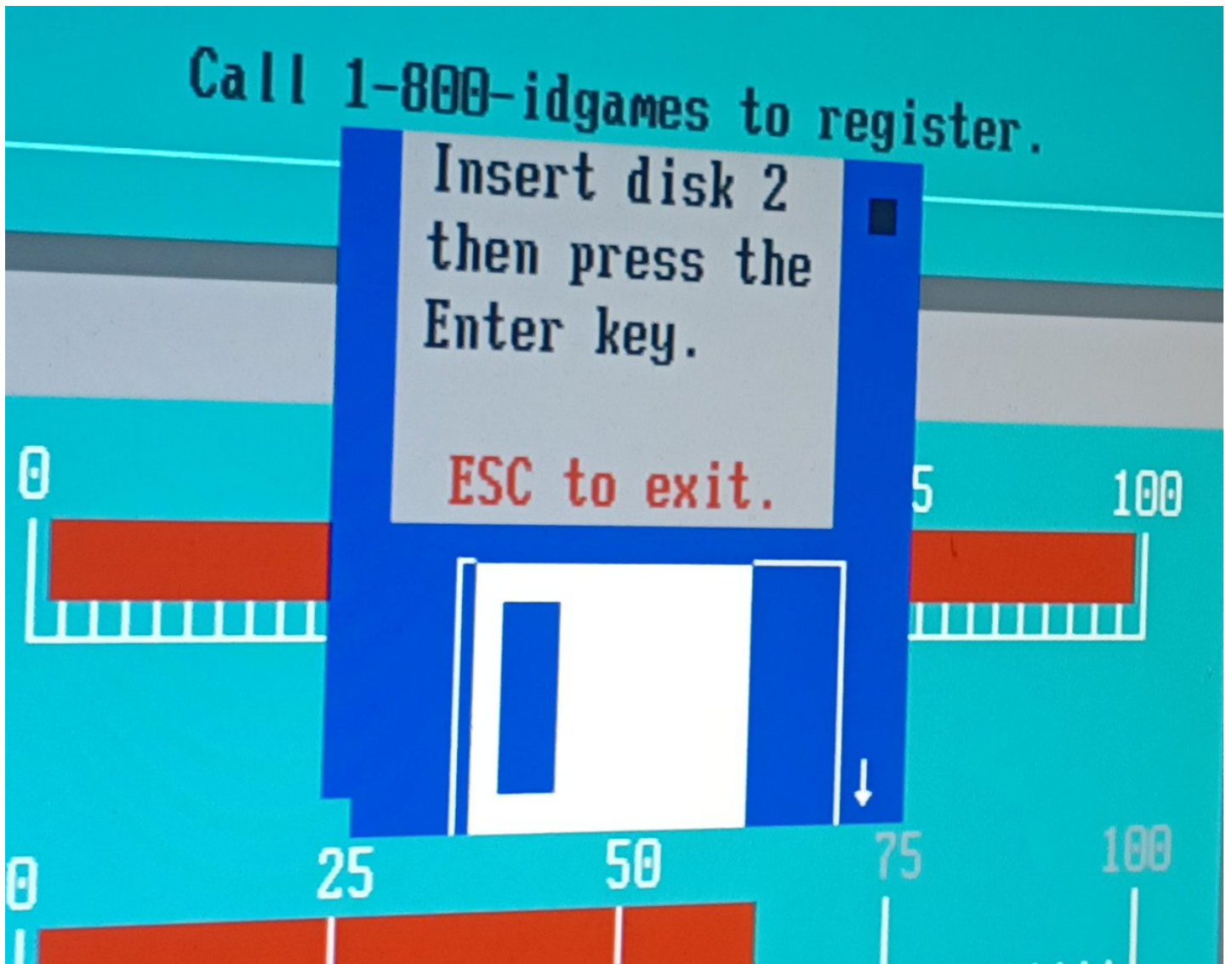


Esc to exit

De-ICE v1.2 by Id Software

ViewSonic

god I love this ANSI art floppy disk



wait, you can't do that. that's illegal



DOOM v1.8  
by id Software, inc.  
Copyright (C) 1993-94

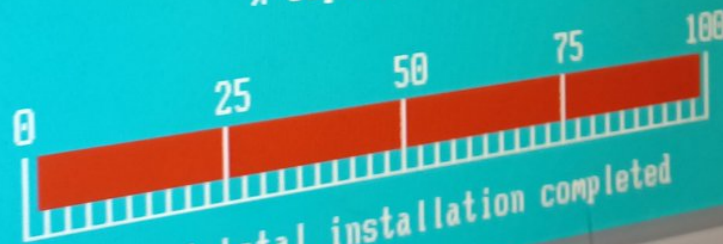
SHAREWARE VERSION  
PLEASE DISTRIBUTE!

Call 1-800-idgames to register.

Finished rebuilding executable. Insert Disk 1 again.  
Press Enter to decompress.



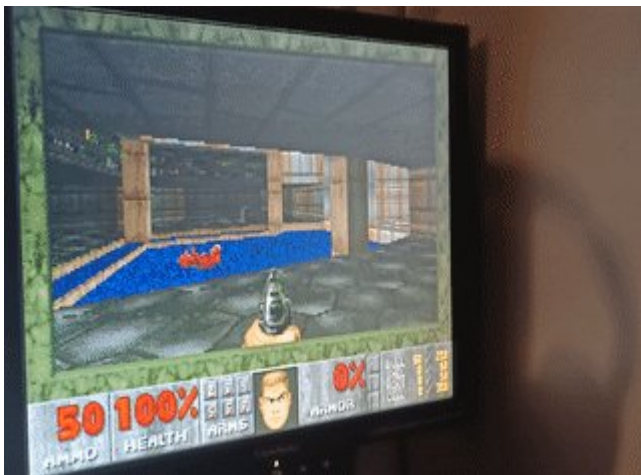
% copied of disk 2



% of total installation completed

Esc to exit

this is not how Doom is supposed to run, man.  
isn't this shit a 486? yeah, it's a 66mhz 486.  
the fuck?



so why is it benchmarking like a fucking tandy 1000? an 16mhz 8086!

SCORE: 27      The current system...  
MemTest:      MemEA:      Opcodes:      VidMem:      3DGames:      Total:  
506 µsec      369 µsec      283 µsec      398 µsec      278 µsec      1834 µsec

...most closely matches the following entry in the database:  
IBM PS/2 Model 80

Tandy 1000 SL (FrankenTandy)  
AT&T 6312 WGS

Matched system detail:  
SCORE: 26      MemTest:      MemEA:      Opcodes:      VidMem:      3DGames:      Total:  
600 µsec      384 µsec      310 µsec      414 µsec      300 µsec      2000 µsec

CPU: NEC V30HL @ 16.6 MHz

Video Adapter: CGA (Tandy 1000 SL/TL)

Submitter: CarlosTex [QVogons] [QVCfed]; This file contains fingerprinting info

BIOS Info:

Tandy BIOS 1.04

Description:

Tandy 1000 SL modded with a 50MHz OSC1

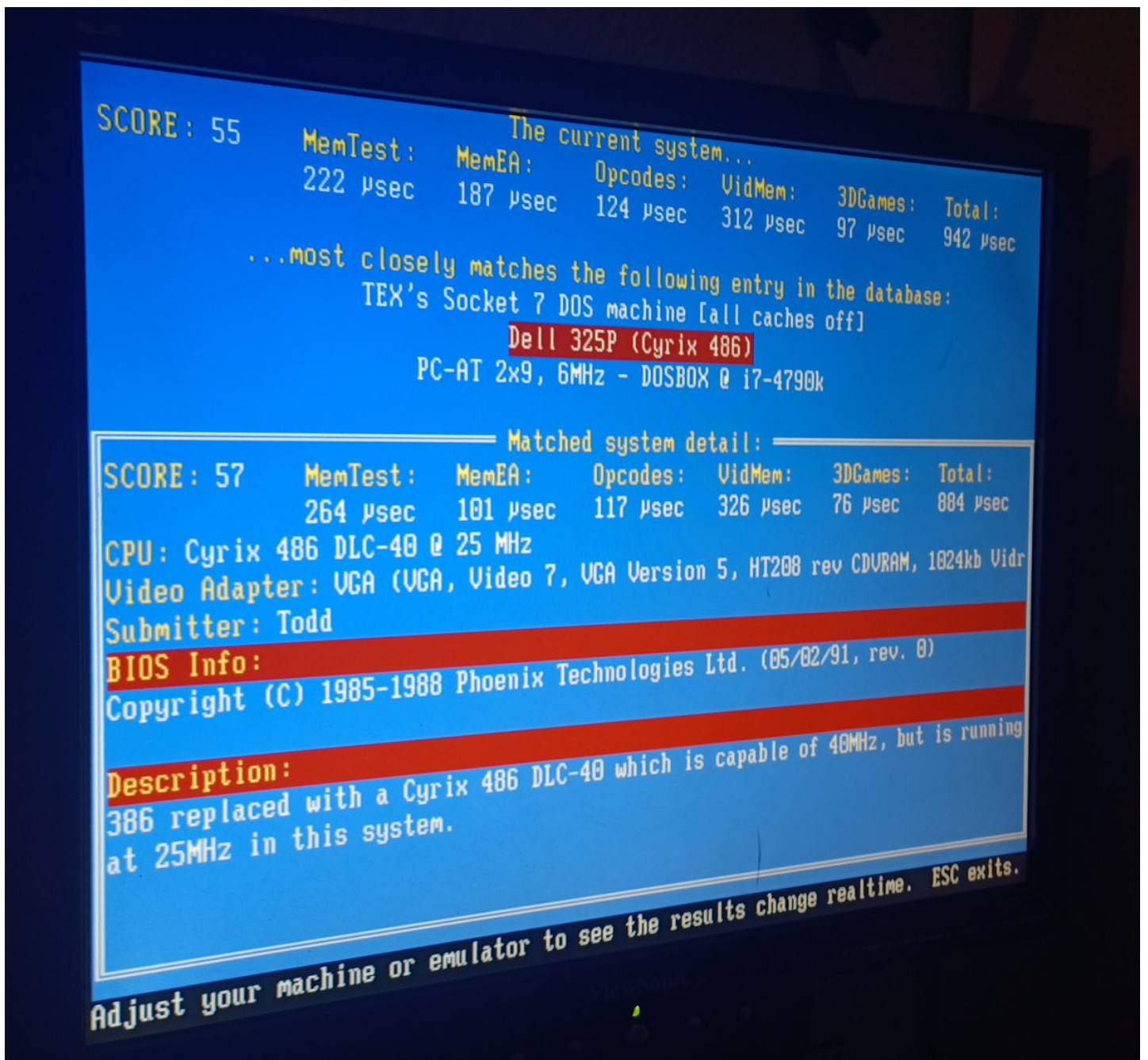
Adjust your machine or emulator to see the results change realtime. ESC exits.

OK I fixed some bios settings and it's now as fast as a 25 mhz.

huh.

This cyrix really sucks, eh?





better? crappy, but better.



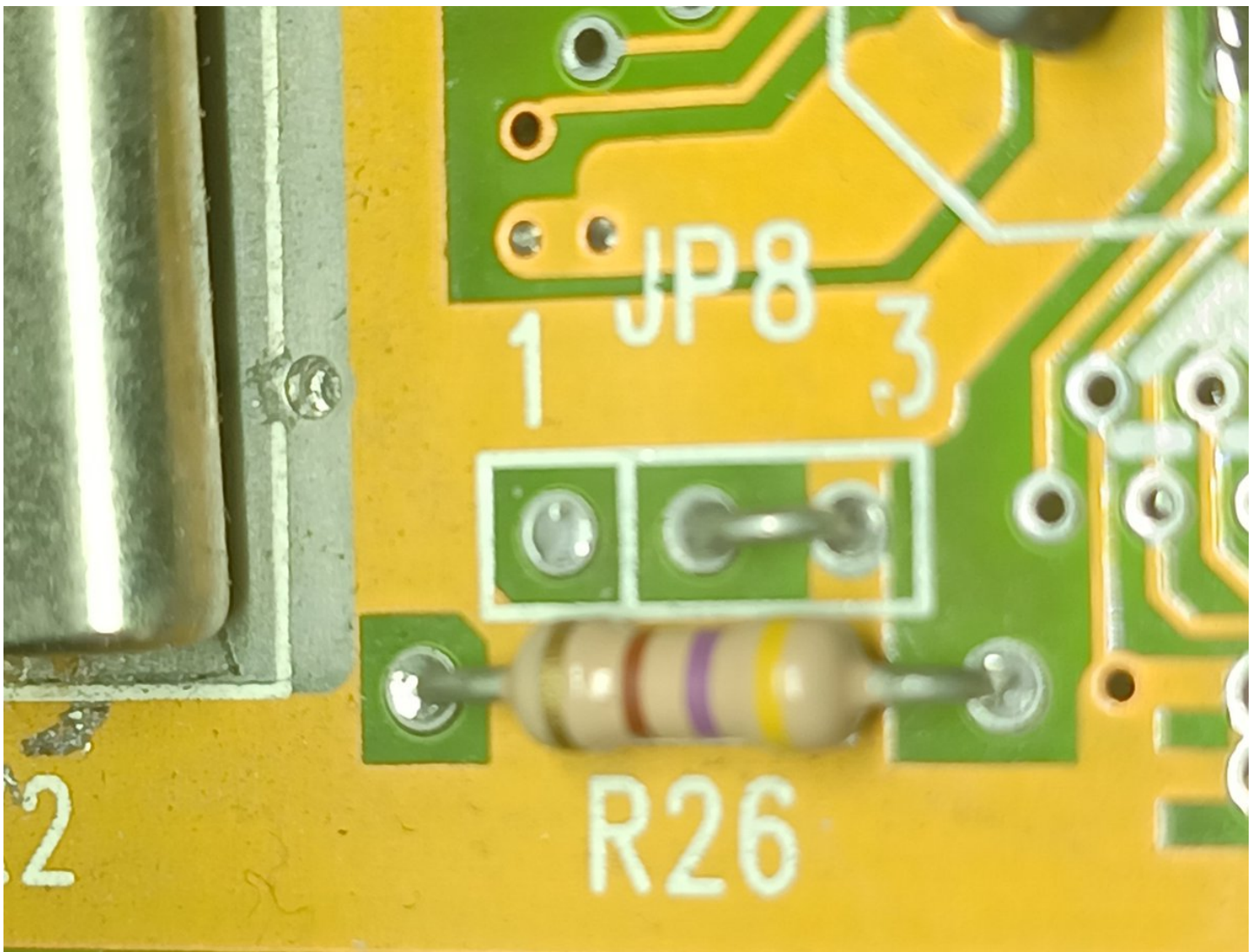
ok the chip is a Cx486SLC2.

That's really a 386... but it should be running at 50mhz. it definitely isn't.



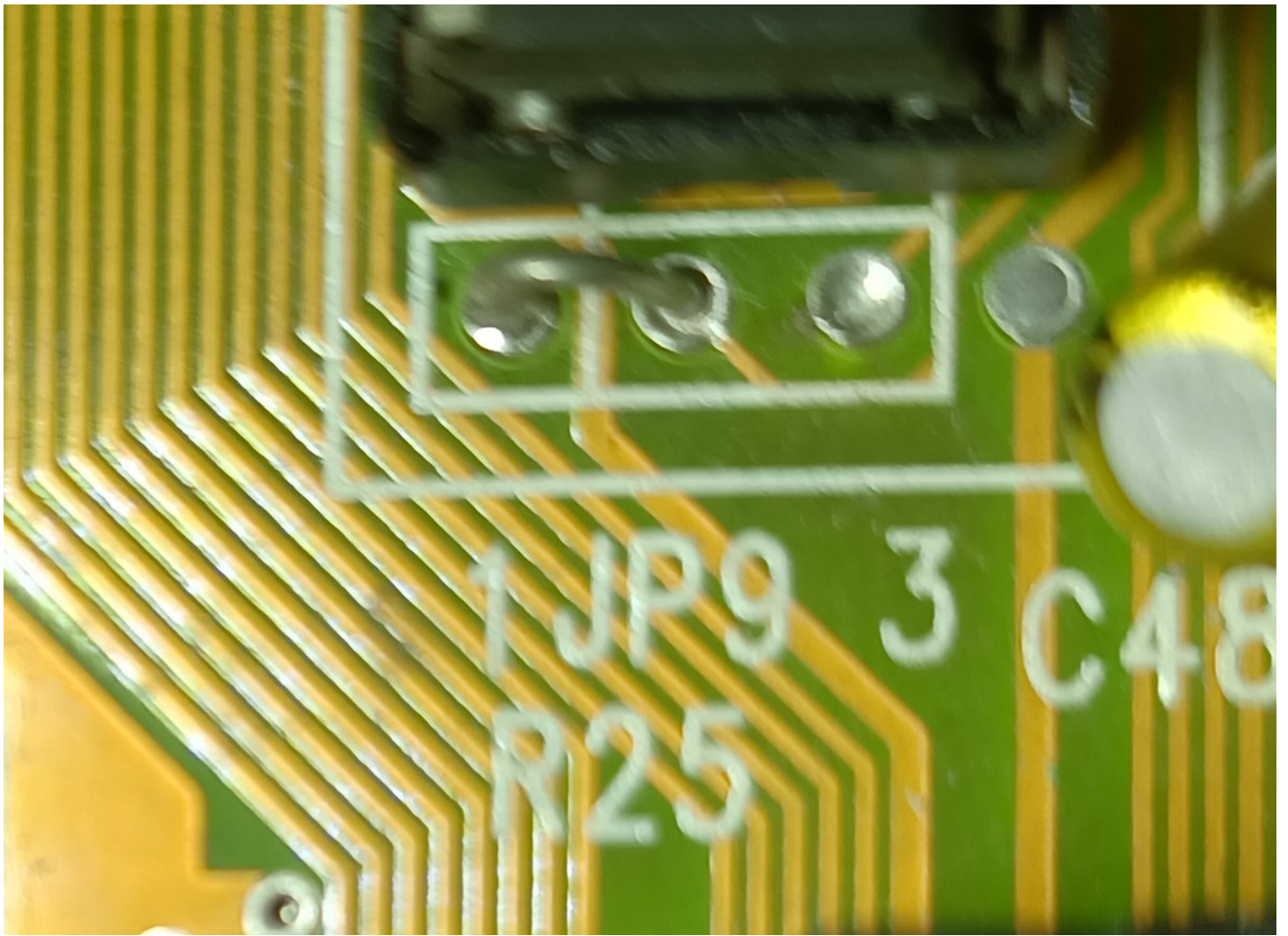


So I can adjust the CPU speed by changing jumper 8... which isn't there. They hardwired it.



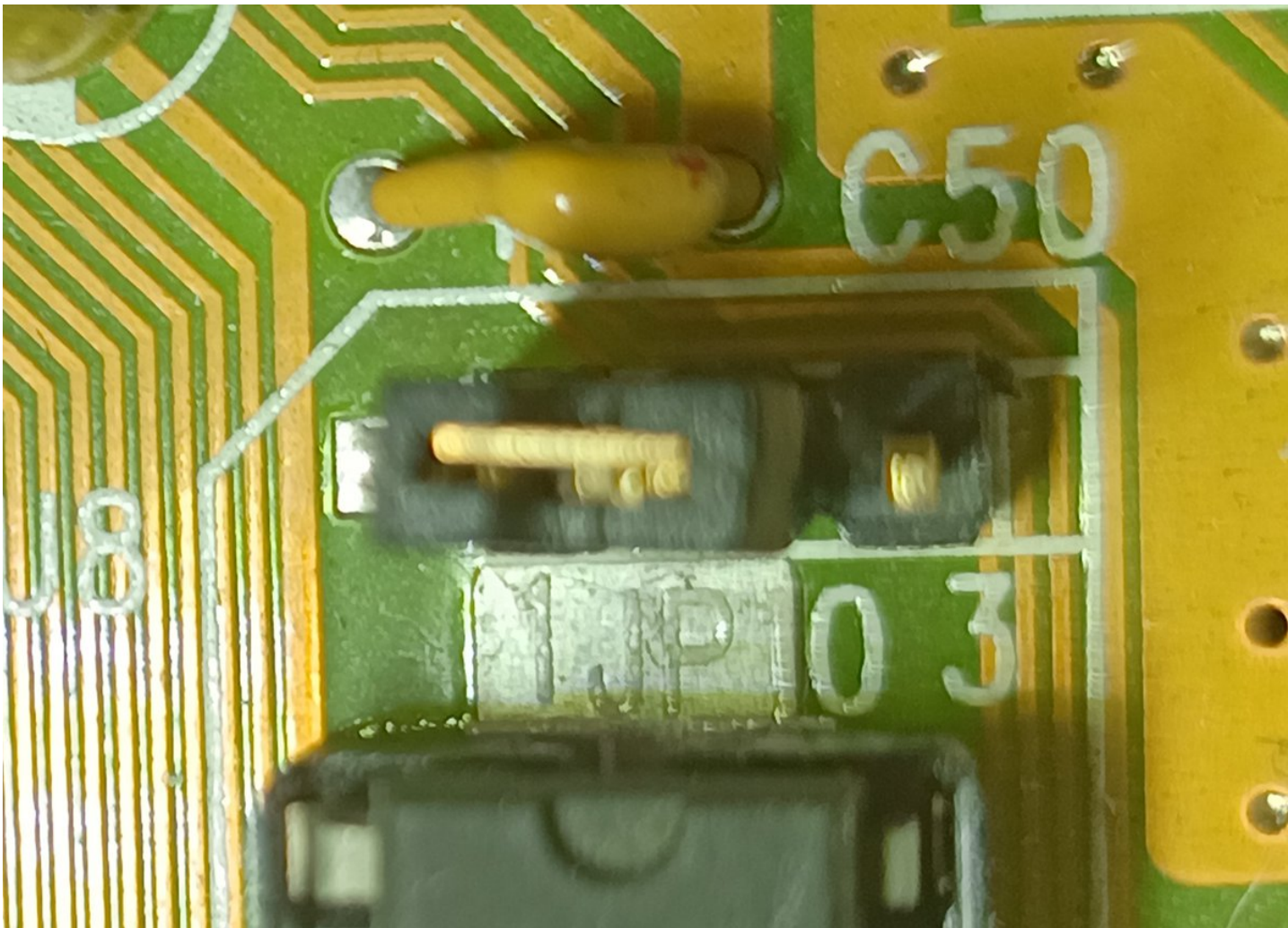
And JP9, which is also hardwired





JP10 isn't hardwired, thankfully.





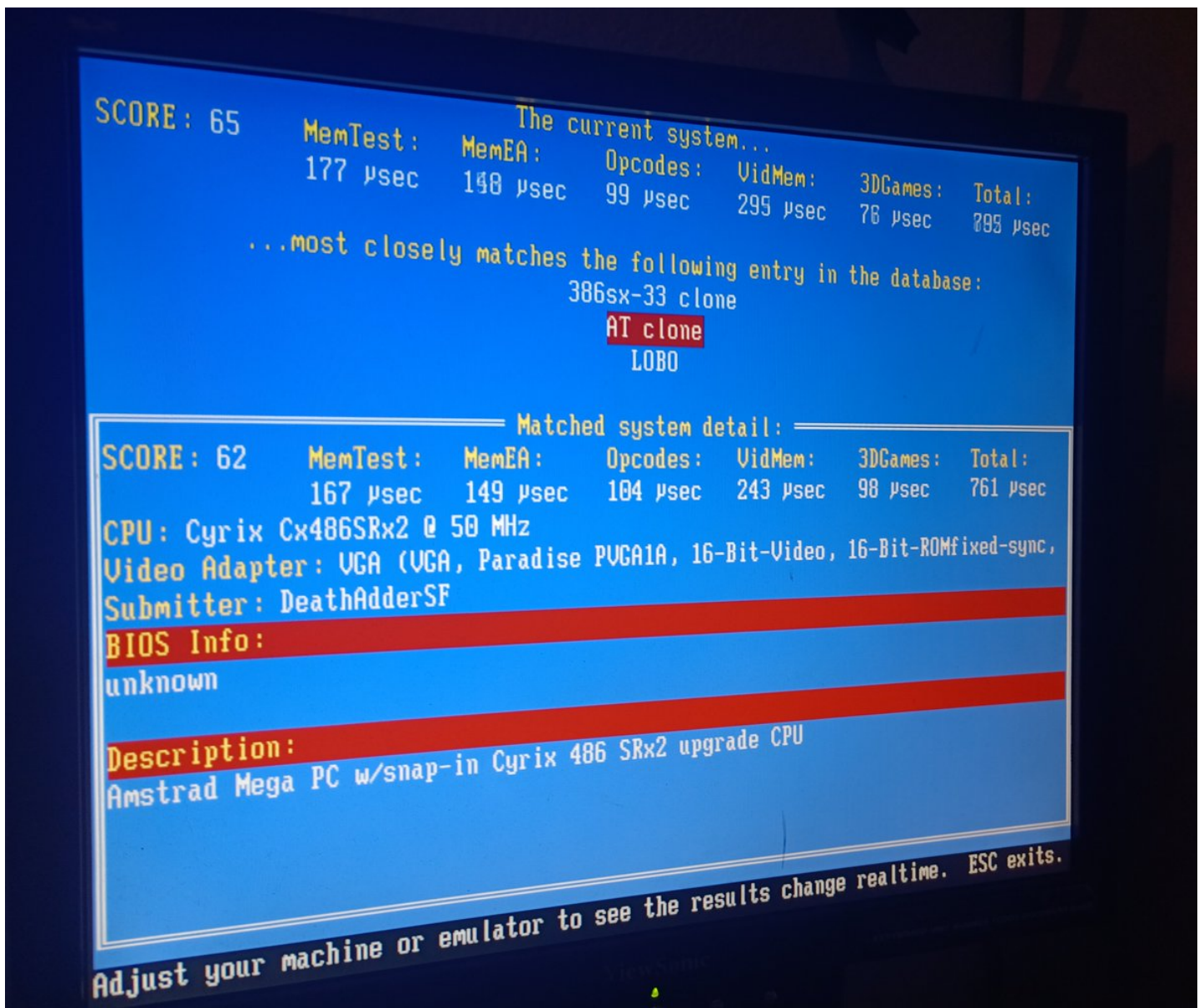
so that means I can do 16mhz or 25 mhz.

and it's currently on 16mhz.

well, let's try 25mhz!

Clock	JP8	JP9	JP10
16MHz	pins 2 & 3 closed	pins 1 & 2 closed	pins 1 & 2 closed
20MHz	pins 2 & 3 closed	N/A	N/A
25MHZ	pins 2 & 3 closed	pins 1 & 2 closed	pins 2 & 3 closed
33MHz	pins 2 & 3 closed	pins 2 & 3 closed	pins 1 & 2 closed
40MHz	pins 1 & 2 closed	pins 2 & 3 closed	pins 2 & 3 closed

Better!



still not great, but it feels a little better.



I wonder if I could overclock this stupid 386. I could desolder that hardwired jumper and replace it with a real jumper...

this board is never gonna be fast, though.

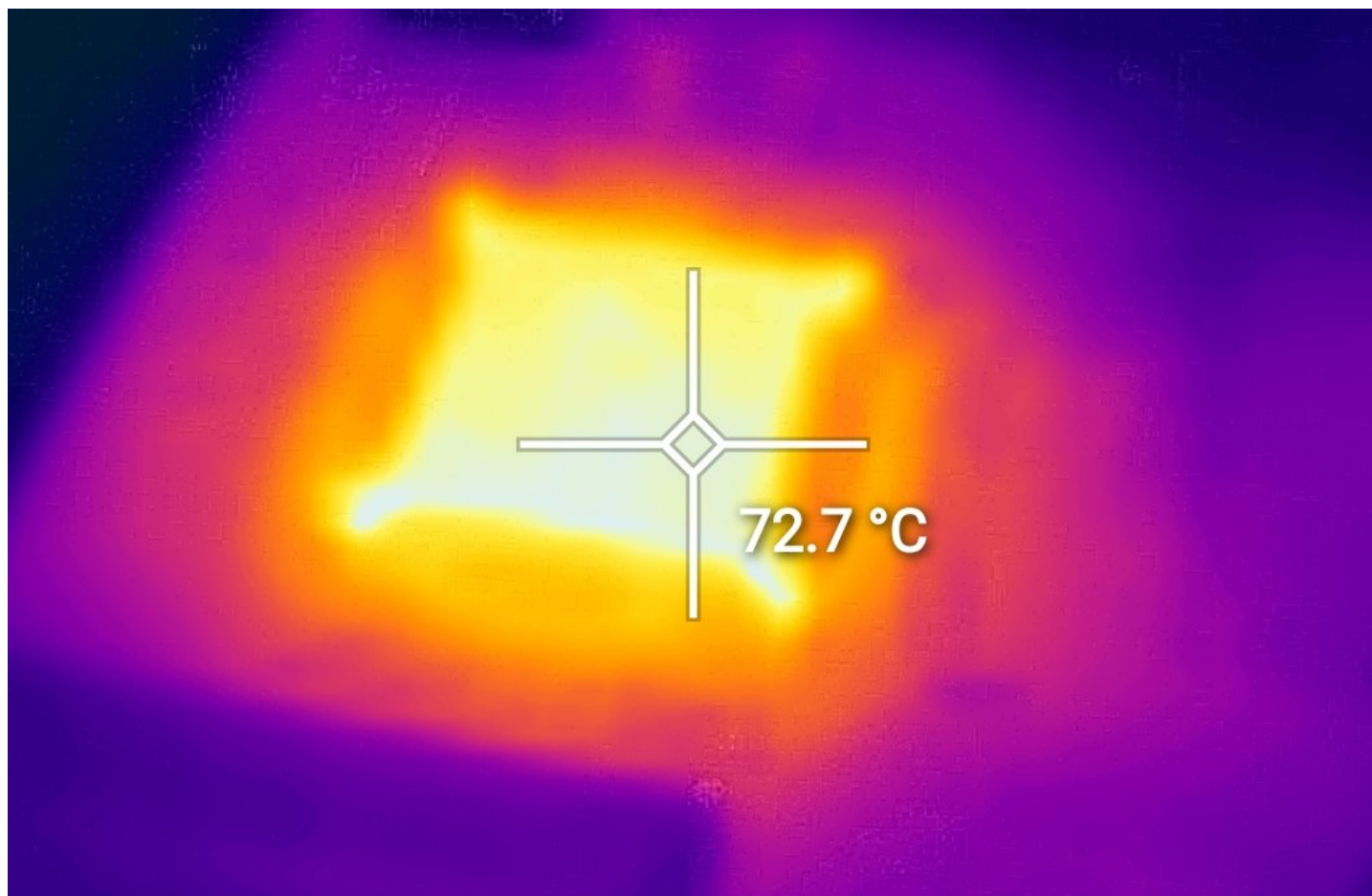
it's got a 486-labeled 386 soldered to the board, and zero cache.



very very limited entry-level board, this.

ok maybe overclocking the 386 is a bad idea.

(I haven't done it yet, this is just how hot it gets at 25mhz)



It may also be the VGA card I'm using. It's an ATI mach32, which is designed for accelerated windows 3.1 use, it might be slow at mode X stuff

or mode Y. I forget which one Doom uses. I think it's Y