

# Twitter Thread by Sagar Solanki



**Sagar Solanki**

@Charts\_insiders



## #Watchlist

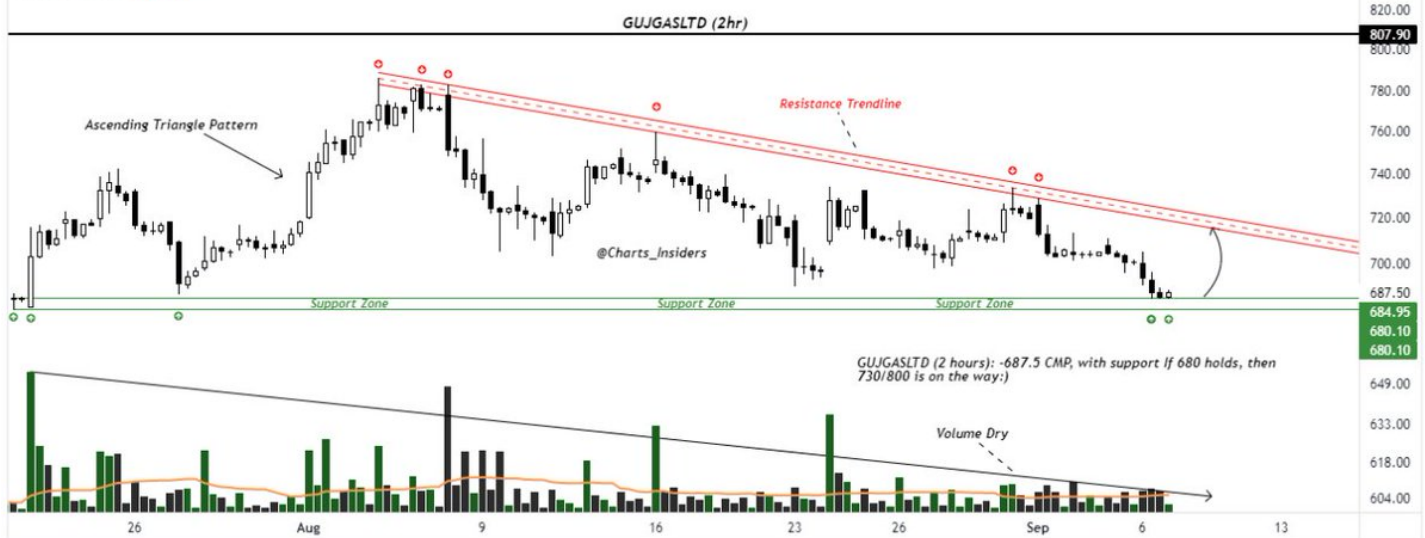
**#GUJGASLTD (2 hours): -687.5 CMP, with support If 680 holds, then 730/800 is on the way :)**

**#Disclaimer:- View shared is for educational purposes only. Conduct your due diligence before making any trading/investment decisions.**

**@caniravkaria @nishkumar1977 <https://t.co/lola9TAScm>**

Charts\_insiders published on TradingView.com, Sep 06, 2021 14:05 UTC

GUJARAT GAS LTD, 2h, NSE O685.25 H688.45 L685.00 C687.50 +2.25 (+0.33%)  
Vol (20) 161.554K 365.553K



Gujarat Gas.... CMP 700...

Baby \U0001f37c \U0001f425 steps \U0001fa9c

Request views and guidance from experts \U0001f64f

(Purely for educational purposes) [pic.twitter.com/Eidd0AHZlZ](https://pic.twitter.com/Eidd0AHZlZ)

