

Twitter Thread by Dom

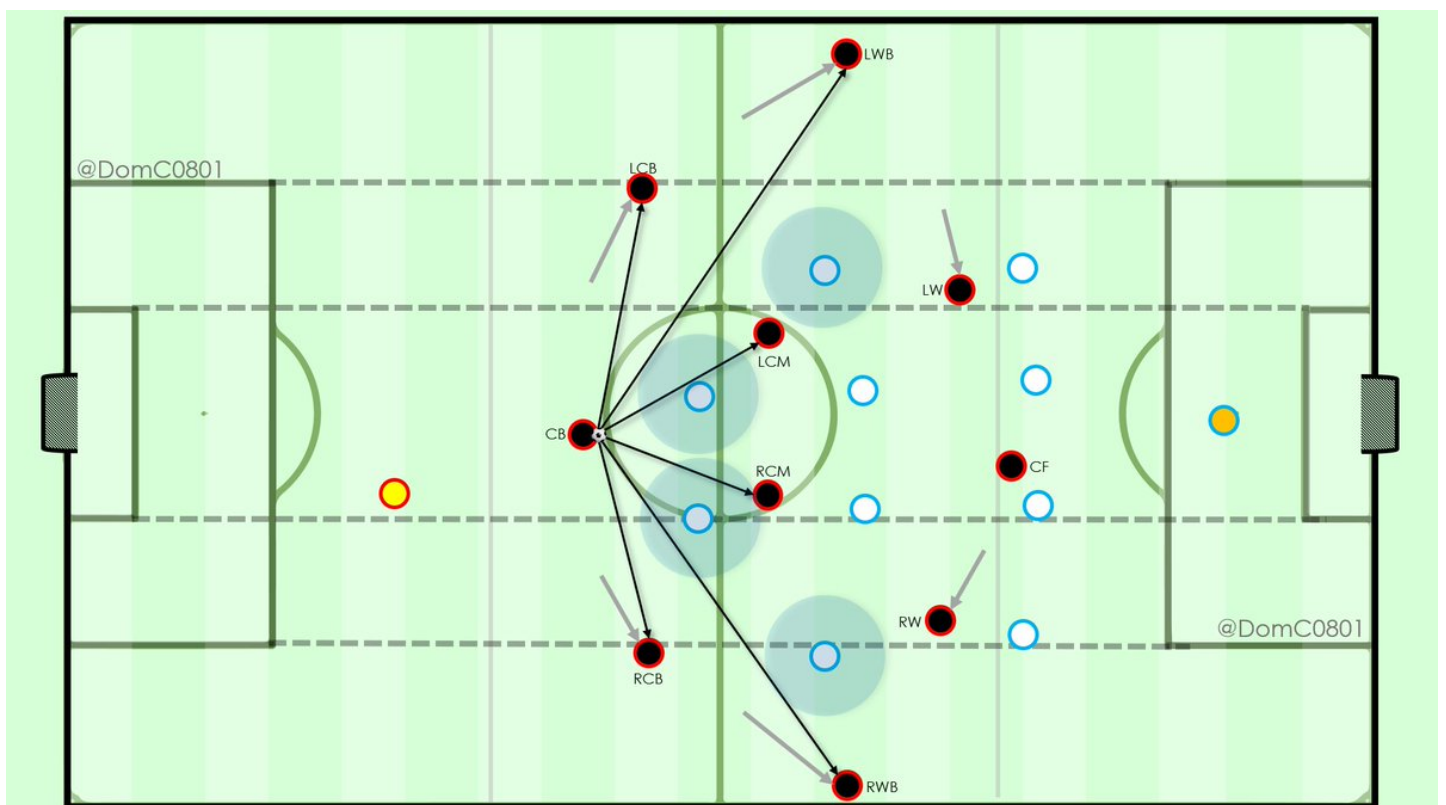
**Dom**

@DomC0801



Why do so many coaches use a 3-4-3 in times of struggle or when taking over a new team?

- Full spectrum of passing angles in 1st phase build-up
- Force highlighted players in this 4-4-2 to make quick decisions
- Natural width in 1st phase
- Protection in transition



@AFHStewart @C_Carpenter14 @BundesPL @JamiescottUV @la_notice @craigmoniz @afcixmes