

## Twitter Thread by Learn to Trade



**Learn to Trade**

**@learntotrade365**



### Option Buying Simplified (PART -2)

Very important thread for all option buyers ■

Just 5 to 10 minutes to read but it can change your trading a lot.

Support us by RETWEET this tweet to help more option buyers to gain knowledge & to avoid getting trapped from big players <https://t.co/yBZ6Y7BaGx>

# OPTION BUYING SIMPLIFIED

PART -2

Option Buying Simplified

Very important thread for all option buyers \U0001f9f5

Just 5 minutes to read but it can change your trading a lot.

Support us by RETWEET this tweet to help most option buyers to gain knowledge & to avoid getting trapped from big players [pic.twitter.com/BaaTjJix7F](https://pic.twitter.com/BaaTjJix7F)

— Learn to Trade (@learntotrade365) August 31, 2022

I do Intraday Live Market session via Youtube Live on all trading days - Follow us on twitter [@learntotrade365](https://twitter.com/learntotrade365)

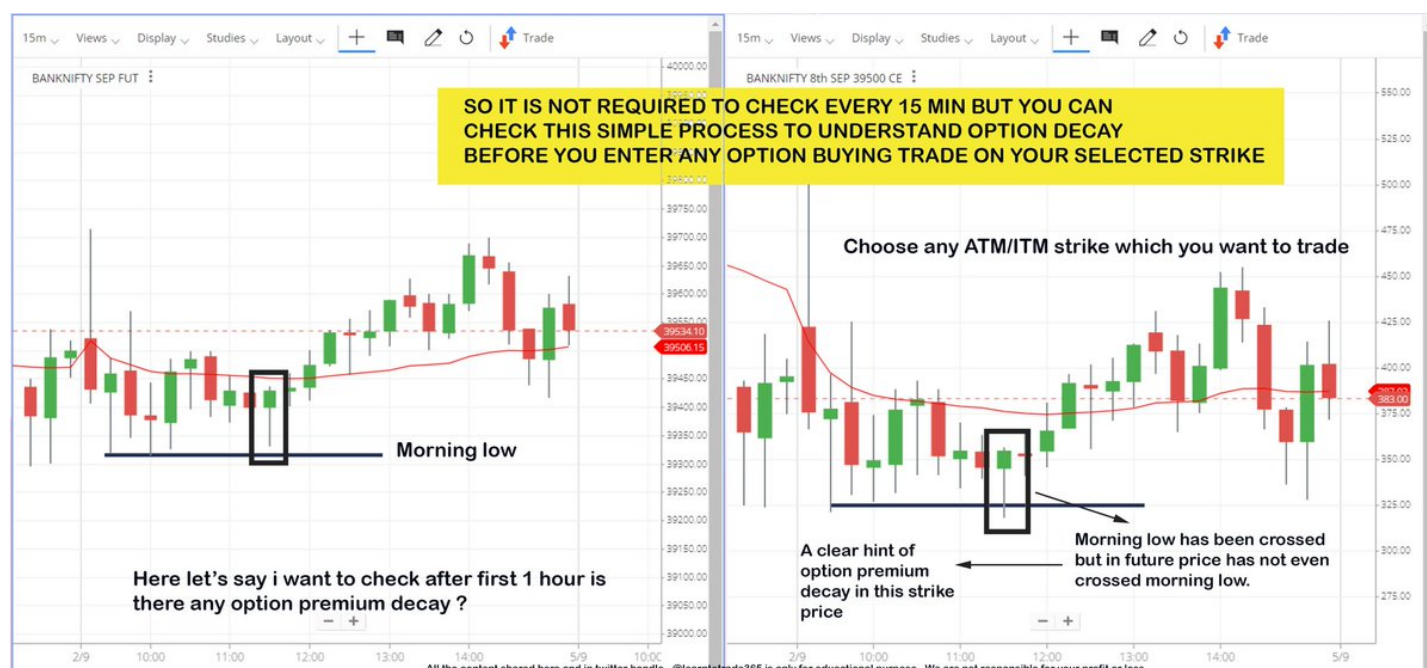
Join the Telegram channel for Live Market updates and more free content.

Scroll down ■

<https://t.co/VU0bCGjU7s>

Main problem which most option buyers face is Option Premium erosion ( Theta Decay ). So I have shared a simple & effective process to understand the option decay during Live Market before entering option buying trades

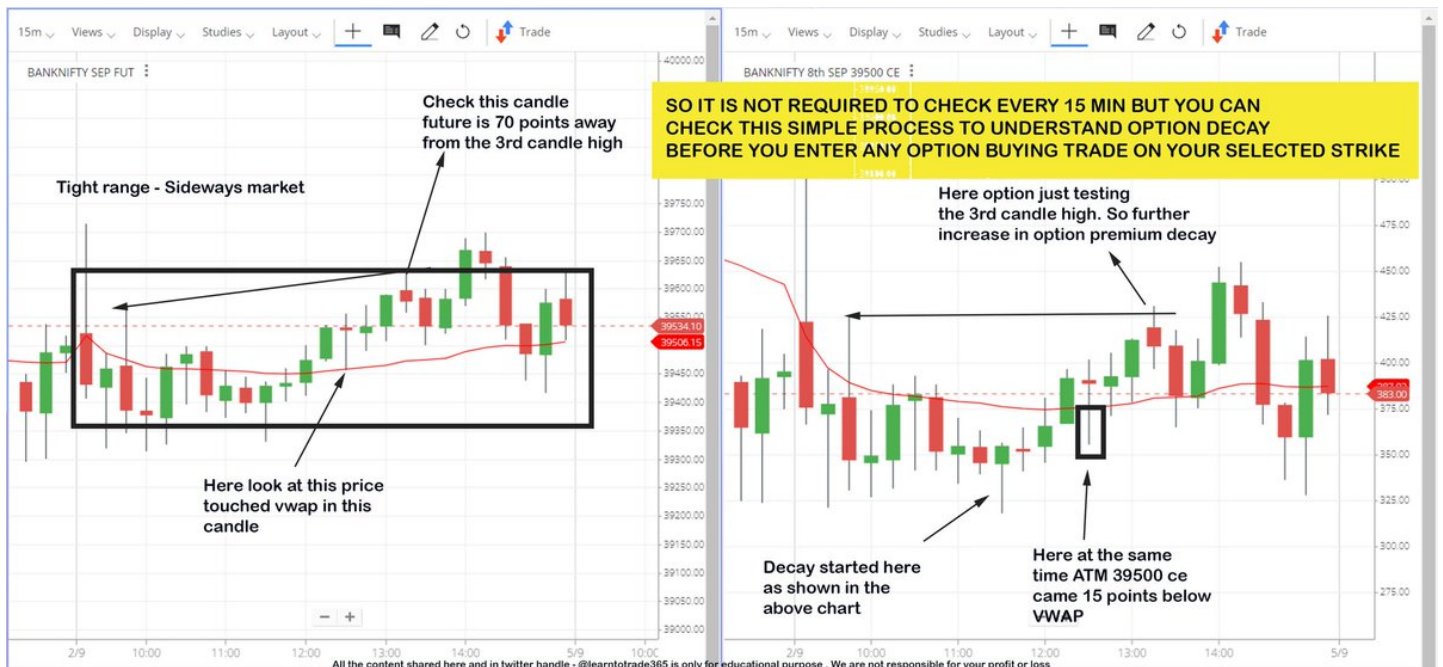
Scroll down ■



Follow up example from the above chart about Option premium decay during sideways market. In general most option premium erosion (theta decay) happens during sideways market.

Theta is option buyers ENEMY

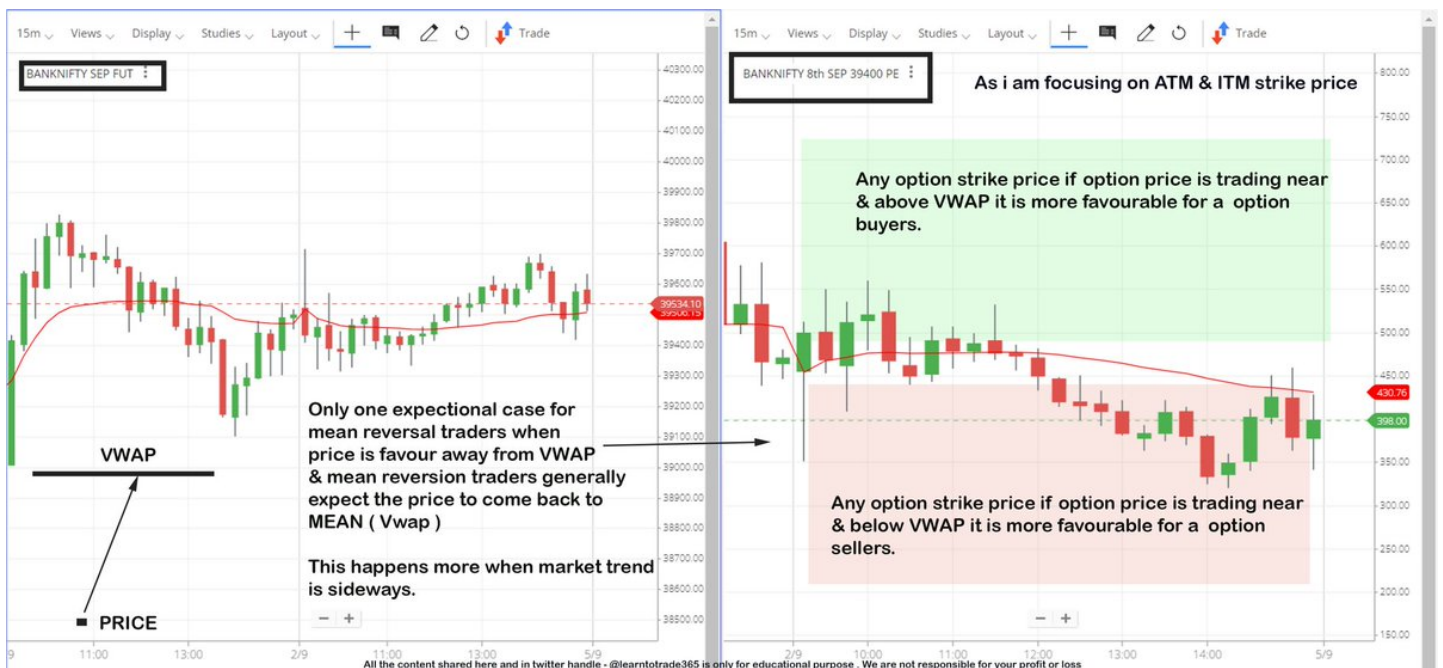
Scroll down ■



Option Buyers high probability zones while trading ATM & ITM strike prices.

VWAP helps a lot in providing data during Live Market

Scroll down ■



Option buyers want,

Direction

Momentum

Price should not spend more time on & around VWAP

If above confirmation is not there during Live Market wait for the opportunity. Make Trading as simple as possible.

Scroll down ■

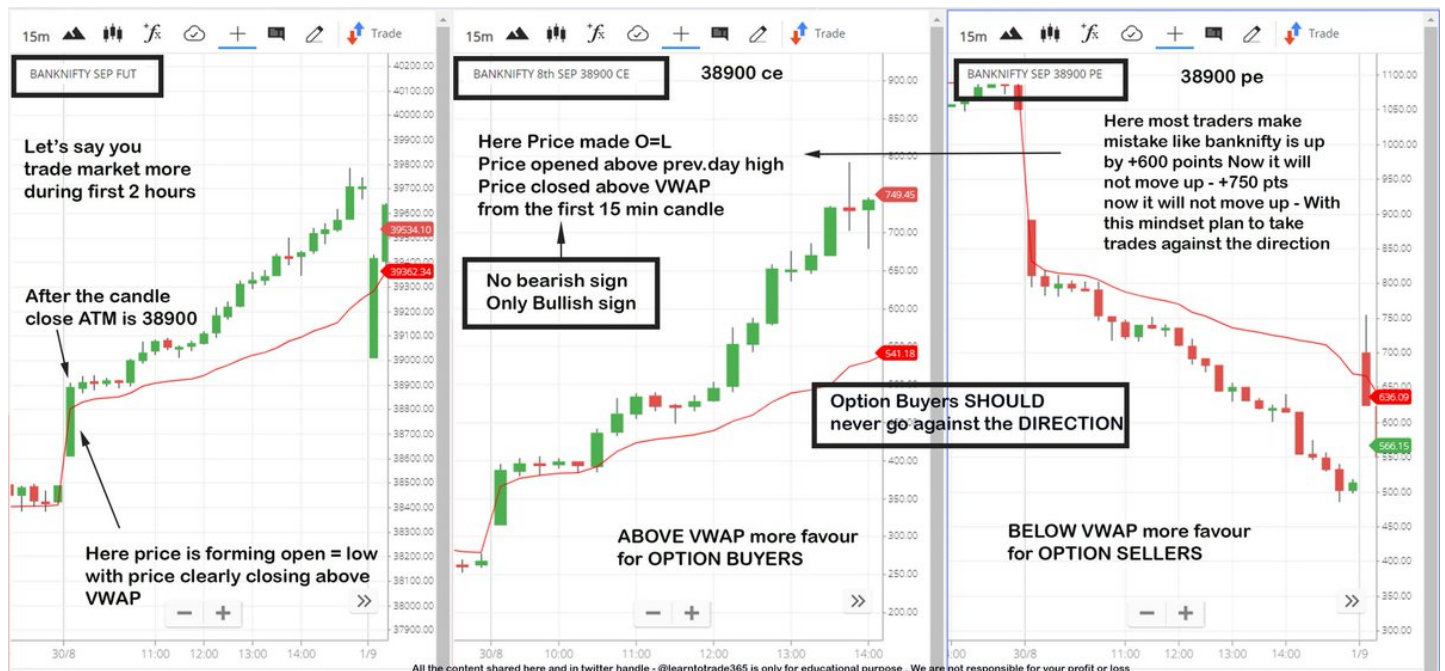
Main work of a option buyer is to stay with the current market direction. When all clues from the chart is showing,

Bullish means focus more on CE

Bearish means focus more on PE

40% to 50% of your loss will be reduced by following the above steps

Scroll down ■



End of the thread

If you find the thread useful make sure to RETWEET & Like the first tweet. Your support is very important.

Follow us on twitter [@learntotrade365](https://twitter.com/learntotrade365) to get more trading content & strategies.

Also do check this MEGA Learning thread ■

<https://t.co/1VnfNSBwKp>

## MEGA LEARNING THREAD

The thread contain all the FREE CONTENT which I have shared so far.

Everyone support us by RETWEET & LIKE so it can reach wider and benefit many traders.

YouTube channel - <https://t.co/pUUwDN7IO5>

Telegram channel - <https://t.co/VU0bCGjU7s> [pic.twitter.com/f0Uf7ech31](https://pic.twitter.com/f0Uf7ech31)

— Learn to Trade (@learntotrade365) August 27, 2022