

Twitter Thread by Logical Trader



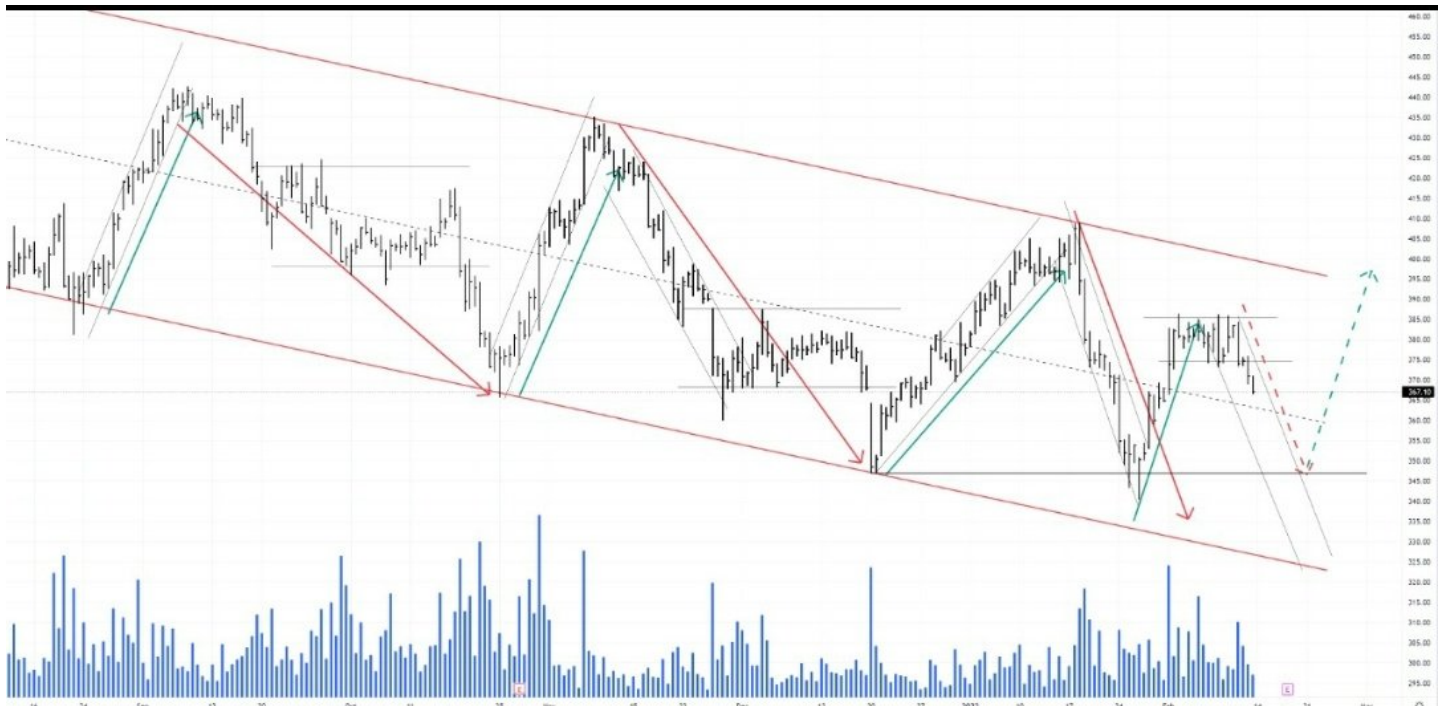
Logical Trader

[@logicaltra6er](#)



Ambuja Cements 4H chart.

Moved in the downward channel within the larger channel as expected, further breaking down the support with high volumes. Charts attached. Predictable moves are the best to trade. #StockMarketIndia #Nifty



<https://t.co/iEybCc9ly2>

