

Twitter Thread by [OnlyGreenTrades](#)

[OnlyGreenTrades](#)

[@OnlyGreenTrades](#)



\$BTC falling hard- soon to touch lows from last "crash" selloff

Sold all \$BTC moved all into \$ADA

ADA IS THE WAY



\$ADA ■ 5.03% > \$BTC ■ 3.18%%

If your anything of a technical trader- you have to LOVE the charts on crypto right now ALL timeframes \$ETH \$BTC \$COIN \$ADA \$LINK \$LTC going to be a good next couple day's running ■■ \$ADA though all the way 10,13,30,50 MA top to bottom



\$BTC 2H & Daily Chart- hook out thru next 30 day prediction (70k by 5/30/21) we're taking \$ADA and \$DOGE to the moon with us ■



\$DOGE well the .5 prediction happened a lot faster than expected lol



\$DOGE coming into a bull flag conversion



■■12.8% or .065 move from alerting- hope you caught it cause it's not even done yet■ lets see that .61!

- golden cross ■

- 61.8% fib rejection and pull back ■

- trend line "new" support ■

= textbook trading ■

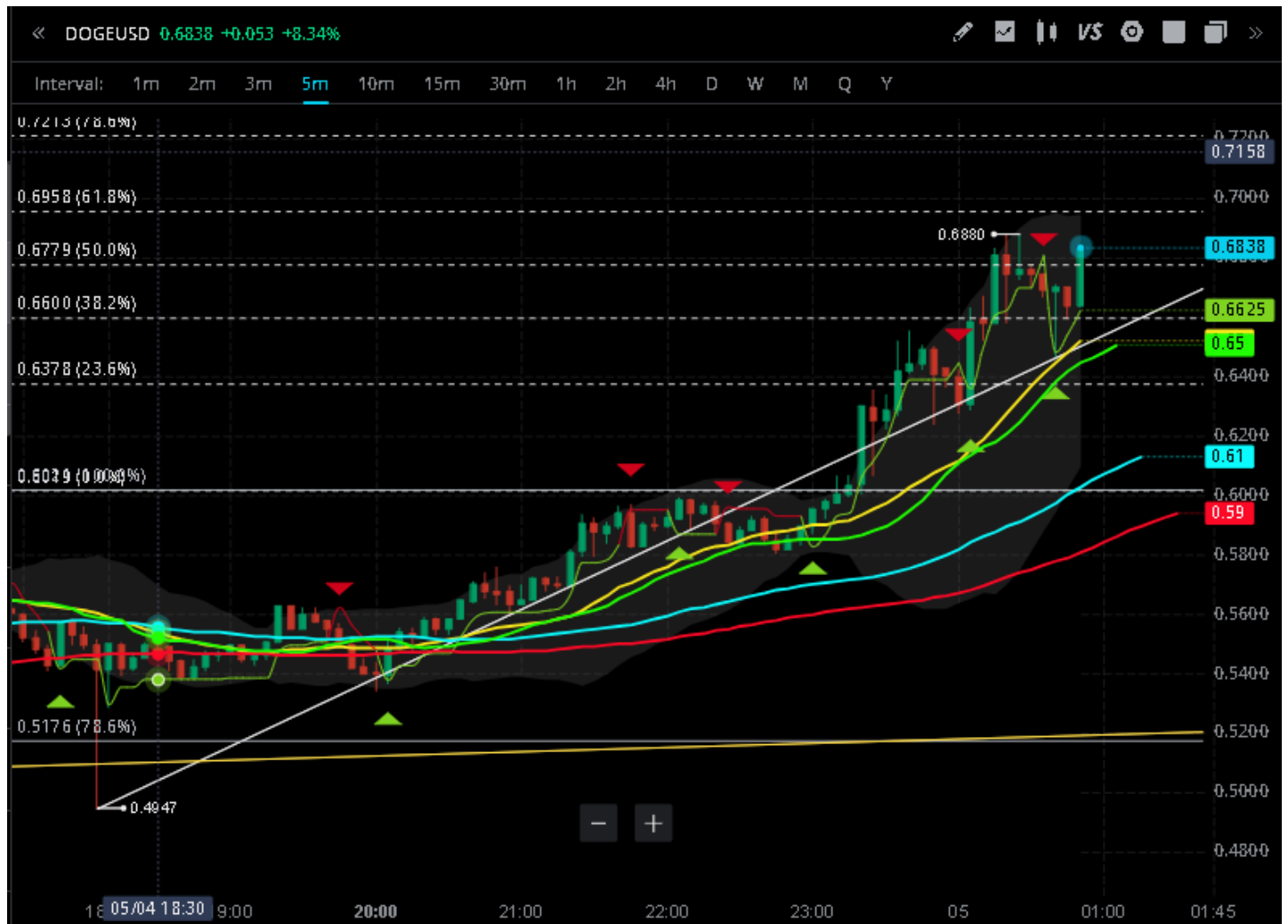
#OGT #DOGE #wishihadkepttheinitial10kfromfeburary

MA's and EMA's and Anchored VWAP from initial run = dip (profit taking) = support entry on those that missed the initial start of the run

Fib lines and trend lines = support & resistance

Parabolic SAR

Super Trend



If you are just starting practice with \$50 or \$100- place your limit buy orders at a level below current price (those mentioned above) and WAIT for it to hit. Next level comes for your target indication = take profit- and repeat- HARDER THAN IT SOUNDS THOUGH!