

Twitter Thread by JayneshKasliwal

JayneshKasliwal

@JayneshKasliwal



Intraday Strangle Option Selling Strategy

"Smart Option Selling "

■ THREAD [MUST READ] ■

[1/16]

How to ■■■■■■/■■■■■■■■ a strategy ?

- Idea/Hypothesis
- Specify entry,exit, SL
- Position Sizing and Risk Mgt.
- Trade log and Backtest Report
- Test in diff. market conditions
- Optimise the strategy
- Track Real Time
- performance Deploy

[2/16]

What is Closest Premium Range ?

Closest Premium is a strategy where we select options not based on strikes like (ATM , OTM 100 OTM 200 etc) but rather based on premium values like 200 , 300 etc

[3/16]

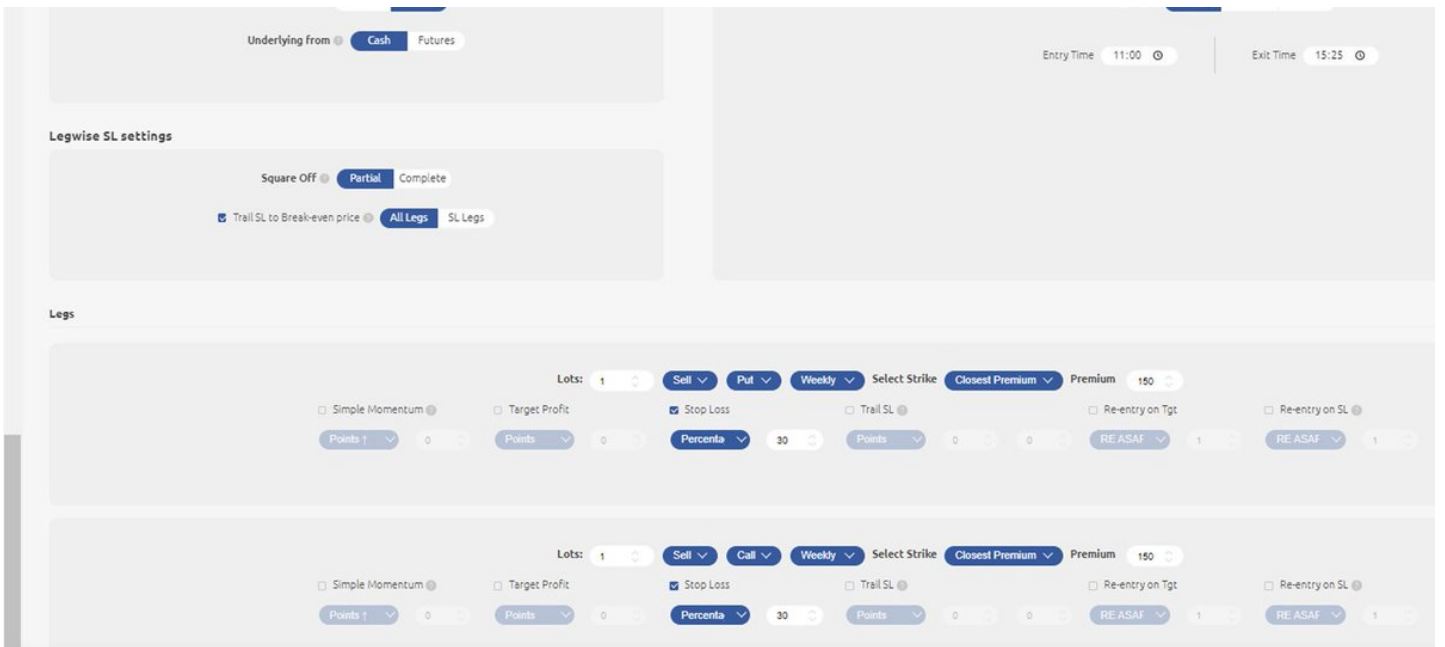
■ If select Closest Premium near 100 then this will be approx 600-700 points OTM on Friday ,300 Points Otm on Wednesday but Atm on Expiry day

■ So This is good for capturing decay on other days as we are selecting far away options and coming near Atm on Expiry

[4/16]

■■■■■■■■ ■: ■:■■ ■■ ■■■ ■■■■ Time : 9:30 AM

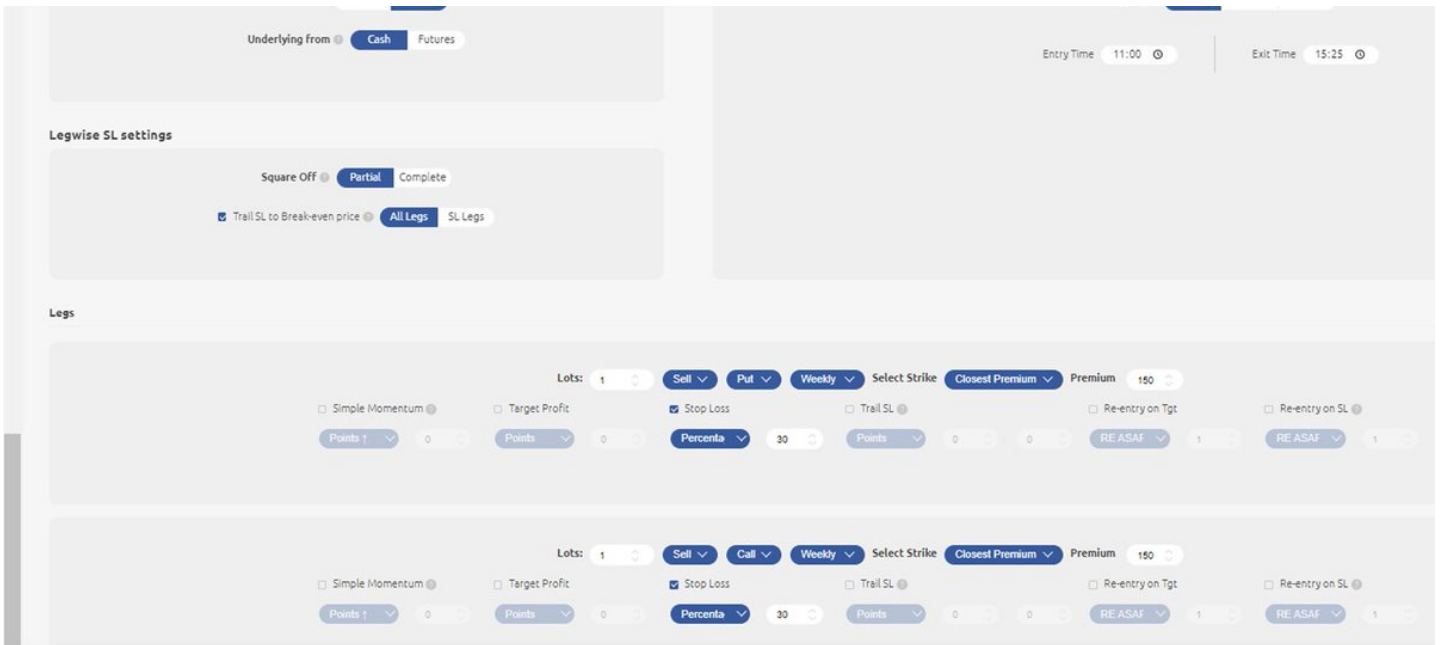
- Instrument : Banknifty
- Strike : Nearest to 200 Rs be it any Strike price
- Stoploss : 40% Per leg, SL move to Cost



■■■■■■■■■■ ■ : ■■■:■■■ ■■■ ■■■■ ■■■■■ Time : 11:00 AM

- Instrument : Banknifty
- Strike : Nearest to 150 Rs be it any Strike price
- Stoploss : 30% Per leg, SL move to Cost
- Exit : 3:25pm or Stoploss
- Days : All or except Thursday

[9/16]



You can set up the same code in ■■■■■■■■■■■ and ■■■■■■■■■■ this Strategy

<https://t.co/71qJopwi0J>

[10/16]

■■■■■ ■■■■■■ the Complete 22 Min Video to understand the strategy better !

<https://t.co/v1KynrKDav> [11/16]

