

Twitter Thread by [Aditya Todmal](#)

[Aditya Todmal](#)

[@AdityaTodmal](#)



8 Powerful Features of [@iChartsIndia](#) Option Data users should be using:■

Collaborated with [@niki_poojary](#)

[@iChartsIndia](#) [@niki_poojary](#) 1. Option Chain (Advanced):

Understand the options chain better so that you know the correct market direction and sell the right options with a higher probability of success.

Open Option Chain on Icharts and then click on:

- Trend
- Buildup
- Vwap

Like this:

Calls				Strike Price	Puts			
OI Chg	OI	Chg (Pts)	LTP	Strike Price	LTP	Chg (Pts)	OI	OI Chg
-16,325	67,425	246.40	1,036.10	34600	128.70	-166.85	2,91,525	58,100
-36,375	46,525	305.80	1,026.00	34700	148.00	-185.80	3,49,800	1,18,750
-60,175	63,525	288.55	944.45	34800	158.05	-207.10	3,00,475	56,400
-26,725	64,100	261.70	853.45	34900	189.25	-219.10	2,42,725	60,450
-2,98,325	7,49,925	258.65	795.00	35000	214.00	-238.55	16,41,075	6,95,700
-55,100	1,54,725	244.70	731.05	35100	242.30	-247.45	2,78,775	1,28,725
-47,500	1,80,325	201.85	641.00	35200	265.00	-262.90	3,69,025	2,66,425
5,550	2,00,575	183.40	572.10	35300	304.05	-282.95	4,04,500	3,57,150
85,950	2,73,925	164.05	511.35	35400	345.00	-307.65	4,27,075	4,09,150
3,86,350	10,46,550	148.30	455.00	35500	382.00	-321.60	11,04,800	10,24,250
4,40,975	5,88,150	146.15	415.00	35600	427.00	-338.35	3,31,325	3,21,650
-1,75,475	6,13,725	132.10	360.00	35700	471.00	-345.90	1,42,625	1,38,300
3,21,525	5,10,550	115.60	315.00	35800	510.05	-379.30	54,800	44,475
72,000	2,50,150	99.15	270.00	35900	596.00	-370.55	24,950	19,700

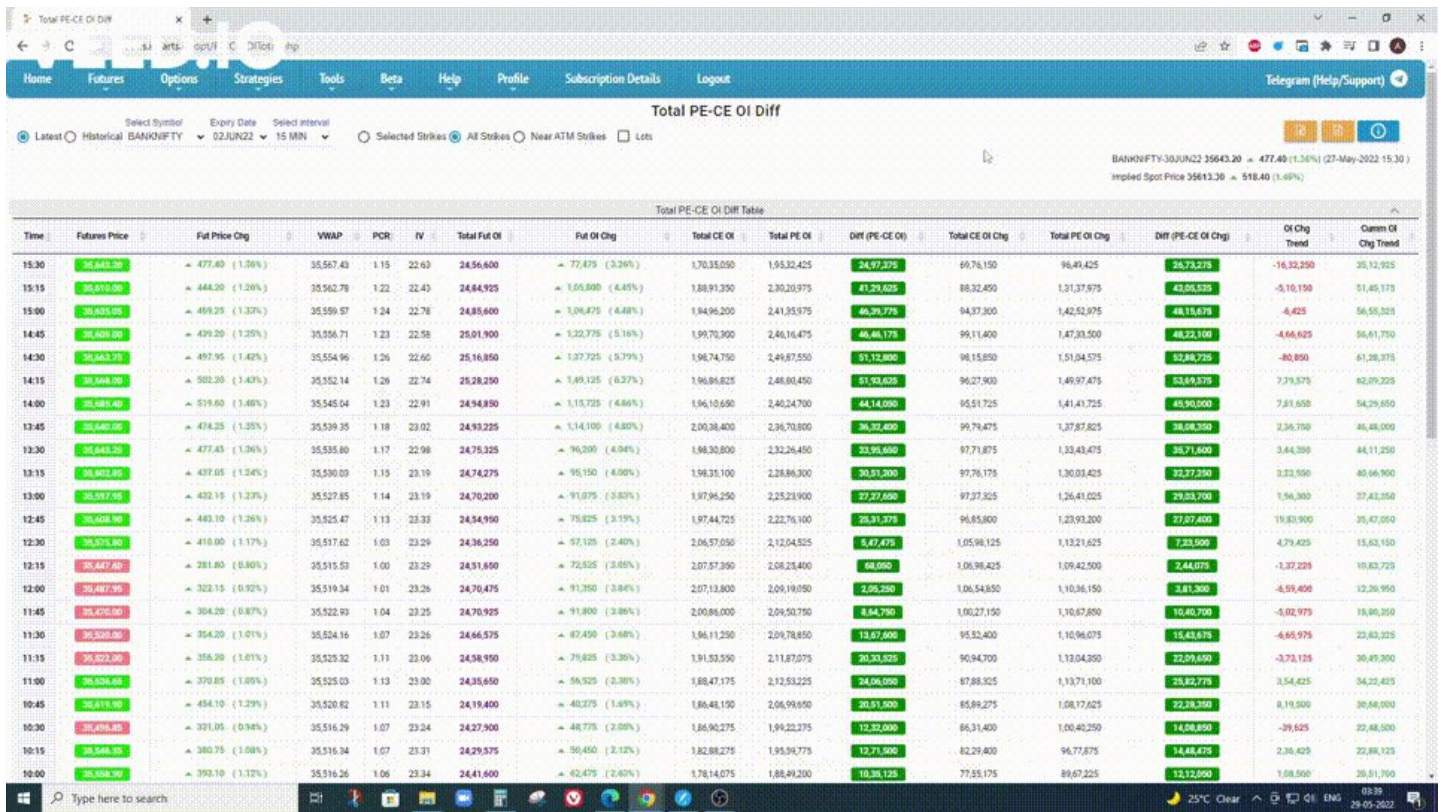
@iChartsIndia @niki_poojary 2. Total PE - CE OI

Most popular and powerful feature, even used by experts like @nitinmurarkasmc heavily.

Observe the intraday Change in OI difference and align your trades with where writing is happening.

Can check it only for nearer strikes, or all strikes.

Here's how:

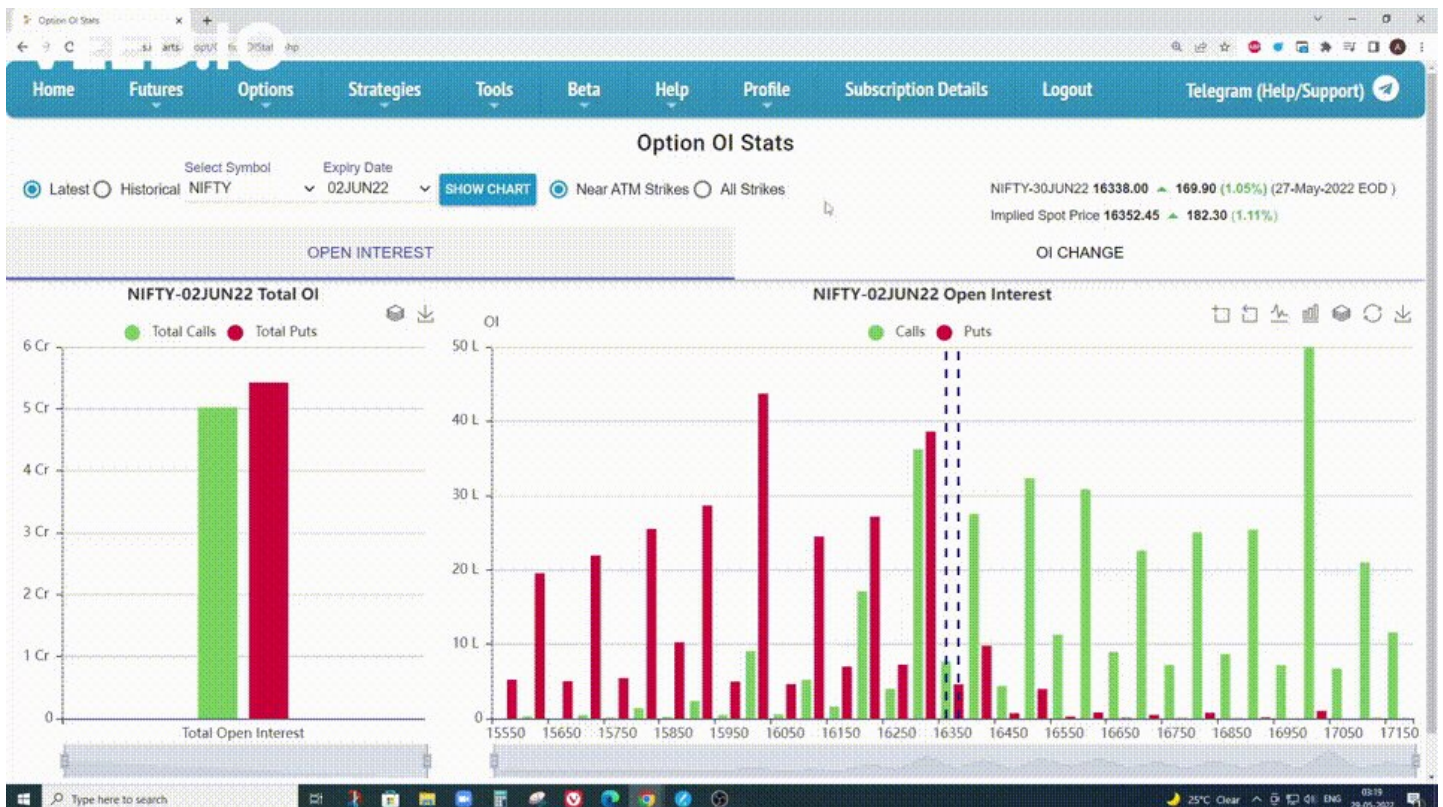


@iChartsIndia @niki_poojary @nitinmurarkasmc 3. Option OI stats

Shows you Total OI and Change in OI in bar chart format.

Can segregate from Near Atm strikes to all strikes.

Historical Data of past expiries is also available to make backtesting easier.

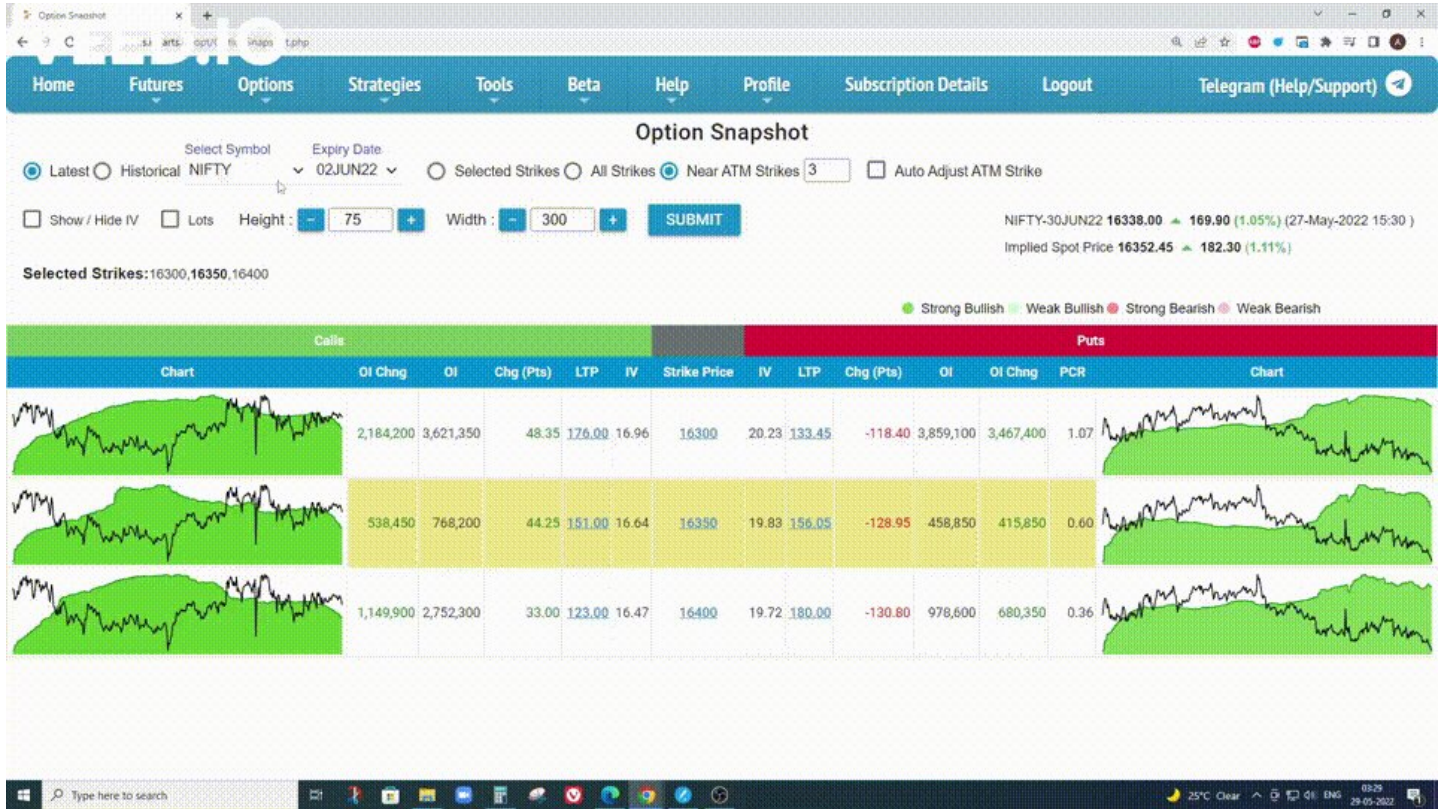


@iChartsIndia @niki_poojary @nitinmurarkasmc 4. Options snapshot

Option Chain with charts and Price and Open Interest showing in them.

Can look where open interest changes are happening.

Know quickly about multiple strikes Oi behaviors.



@iChartsIndia @niki_poojary @nitinmurarkasmc 5. Options Intraday OI Breakup

Can see the individual data of any strike at any interval you want as per your liking.

I have seen a few scalper traders recommending this to their followers.

Options Intraday OI Breakup

Latest | Historical | BANKNIFTY | 02JUN22 | Call Strike: 35100 | Put Strike: 33700 | Select interval: 15 MIN | Lots

BANKNIFTY-30JUN22 35643.20 ▲ 477.40 (1.36%) (27-May-2022 15:30)
Implied Spot Price 35613.30 ▲ 518.40 (1.46%)

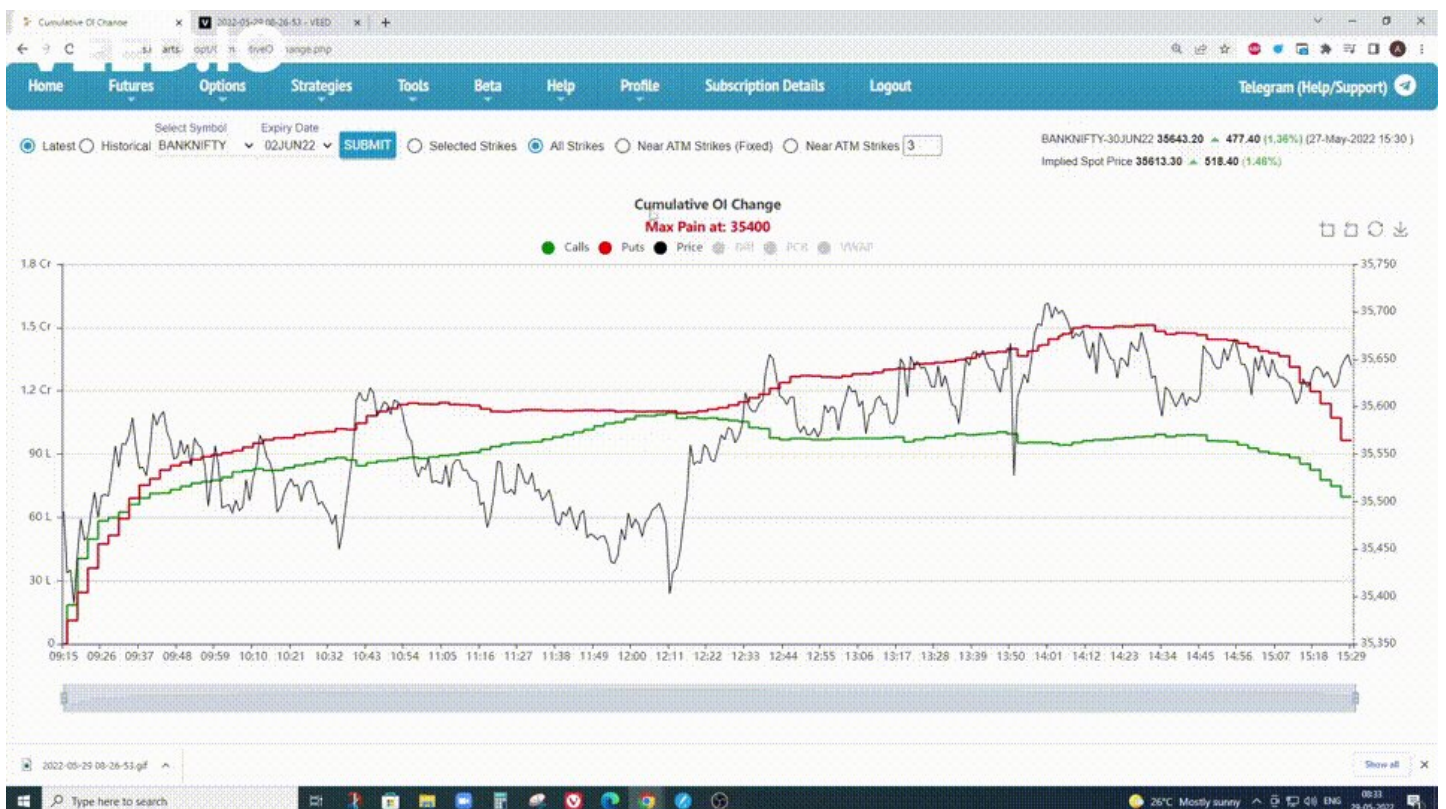
Time	35100 CE										33700 PE														
	OI	Total OI Chg (%)	Day High	Day Low	Volume	VWAP	Price	IV	Price Chg	OI Chg	Buildup	PCR	Combined OI	Combined Price	Buildup	OI Chg	Price Chg	IV	Price	VWAP	Volume	Day Low	Day High	Total OI Chg (%)	OI
15:30	1,58,075	-24.66	798.20	591.20	1,36,250	683.27	731.95	21.80	15.00	-20,450	Short Covering	1.03	3,20,675	772.50	Long Unwinding	-45,975	-5.15	29.87	41.45	54.42	1,69,050	37.35	87.55	-10.28	1,62,600
15:15	1,78,525	-14.92	798.20	591.20	85,700	681.16	716.95	23.49	-15.55	-8,475	Long Unwinding	1.16	3,86,500	763.65	Short Covering	-6,375	0.75	30.13	47.80	55.20	1,09,725	43.85	87.55	14.76	2,07,975
15:00	1,87,000	-10.88	798.20	591.20	37,600	679.64	732.98	22.20	16.00	-3,500	Short Covering	1.15	4,01,350	778.85	Short Buildup	3,475	-2.10	30.59	46.85	55.67	73,950	43.85	87.55	18.28	2,14,350
14:45	1,90,500	-9.21	798.20	591.20	39,100	678.61	718.90	23.62	-42.15	2,725	Short Buildup	1.11	4,01,375	764.95	Short Covering	-26,925	3.10	30.24	48.95	56.02	94,825	44.50	87.55	16.36	2,10,875
14:30	1,87,775	-10.51	798.20	591.20	23,925	677.87	758.15	22.52	3.50	-750	Short Covering	1.27	4,25,575	804.00	Long Unwinding	-4,675	-1.85	30.71	45.85	56.47	43,050	44.50	87.55	31.22	2,37,800
14:15	1,88,525	-10.15	798.20	591.20	48,600	677.09	754.65	23.19	-9.25	-10,075	Long Unwinding	1.29	4,31,000	801.85	Short Buildup	15,375	-0.15	30.67	47.38	56.71	98,450	44.50	87.55	33.88	2,42,475
14:00	1,98,600	-5.35	781.30	591.20	87,125	674.99	763.98	22.15	20.05	-1,050	Short Covering	1.14	4,25,700	811.25	Short Buildup	775	-0.30	31.07	47.35	57.30	88,000	44.70	87.55	25.31	2,27,100
13:45	1,99,650	-4.85	770.00	591.20	30,850	672.92	743.85	22.92	-1.05	-25	Long Unwinding	1.13	4,25,975	791.50	Long Buildup	3,600	0.30	30.57	47.85	57.79	63,950	45.15	87.55	24.89	2,26,325
13:30	1,99,675	-4.84	770.00	591.20	38,950	671.97	744.90	23.70	20.10	-3,400	Short Covering	1.12	4,22,400	792.25	Short Buildup	9,625	-3.20	30.30	47.95	58.20	72,700	45.15	87.55	22.90	2,22,725
13:15	2,03,075	-3.22	760.00	591.20	33,550	670.60	724.80	22.91	4.80	1,200	Long Buildup	1.05	4,16,175	775.35	Long Buildup	1,675	0.05	30.63	50.55	58.76	46,175	48.20	87.55	17.59	2,13,100
13:00	2,01,875	-3.79	760.00	591.20	38,750	669.79	720.80	23.74	-12.20	1,025	Short Buildup	1.05	4,13,300	770.50	Long Unwinding	-2,825	-1.20	30.28	50.58	59.05	49,600	48.45	87.55	16.66	2,11,425
12:45	2,00,850	-4.28	760.00	591.20	88,275	668.92	732.30	23.94	31.25	-7,200	Short Covering	1.07	4,15,100	783.90	Short Buildup	17,150	-1.60	30.58	51.78	59.33	86,025	48.45	87.55	18.22	2,14,250
12:30	2,08,050	-0.85	742.00	591.20	1,11,025	666.15	750.95	23.28	70.40	-4,025	Short Covering	0.95	4,05,150	754.25	Short Buildup	14,050	-8.70	30.43	53.30	59.93	78,000	51.30	87.55	8.76	1,97,100
12:15	2,12,075	1.07	742.00	591.20	57,825	665.18	630.55	24.25	-16.75	-125	Long Unwinding	0.86	3,95,125	692.55	Short Covering	-600	4.85	29.97	62.00	60.31	48,075	51.30	87.55	1.01	1,83,050
12:00	2,12,200	1.13	742.00	591.20	71,825	666.28	647.30	24.55	5.10	100	Long Buildup	0.87	3,95,850	704.45	Short Buildup	1,575	-2.40	29.53	57.15	60.34	56,725	51.30	87.55	1.34	1,83,650
11:45	2,12,100	1.08	742.00	591.20	61,175	667.54	647.20	23.50	-31.20	-1,825	Long Unwinding	0.86	3,94,175	701.75	Short Covering	-1,550	3.50	30.06	59.35	60.40	37,575	51.30	87.55	0.47	1,82,075
11:30	2,13,925	1.95	742.00	591.20	72,475	667.82	673.40	23.67	-3.00	-3,800	Long Unwinding	0.86	3,97,550	729.45	Short Covering	-2,100	0.70	30.08	56.85	60.52	57,525	51.30	87.55	1.32	1,83,625

@iChartsIndia @niki_poojary @nitinmurarkasmc 6. Cumulative OI change

Compare the total Open interest of the whole option chain amongst Calls and Puts.

Can also see this only for the near ATM strikes.

Can check historical data as well.



[@iChartsIndia](#) [@niki_poojary](#) [@nitinmurarkasmc](#) 7. Backtesting historical Data

The most powerful feature of Icharts is the ability to backtest historical options data with ease.

Nearly all features have this feature enabled in them.

For eg, on Gap days can see how premiums behaved on the gap side and be prepared next time.

[@iChartsIndia](#) [@niki_poojary](#) [@nitinmurarkasmc](#) 8. Data in different time intervals

Another awesome feature of Icharts is the ability to see any data in any time interval as we see fit.

For eg 3 mins, 5 mins, 10 mins, 15 mins, etc all can be seen separately.

[@iChartsIndia](#) [@niki_poojary](#) [@nitinmurarkasmc](#) Hope you discovered something new (because that's the point!)

If you did, share it with a friend

Hop back up 2 retweet the first tweet

See past threads here: [@AdityaTodmal](#) & [@niki_poojary](#)

If you enjoyed this thread here's another one:

<https://t.co/PfX680Zrj3>

THREAD: 14 of the best resources/topics for anyone who wants to start option selling as a career. \U0001f9f5

Collaborated with [@niki_poojary](#)

— Aditya Todmal (@AdityaTodmal) [March 13, 2022](#)

[@iChartsIndia](#) [@niki_poojary](#) [@nitinmurarkasmc](#) [@iamswingtrader](#) from [@iChartsIndia](#) and his team have done a great job in providing a one-place solution for data readers and data lovers.

If you have any questions for them feel free to reach out to them and if you do like the service they are providing you can take the same!