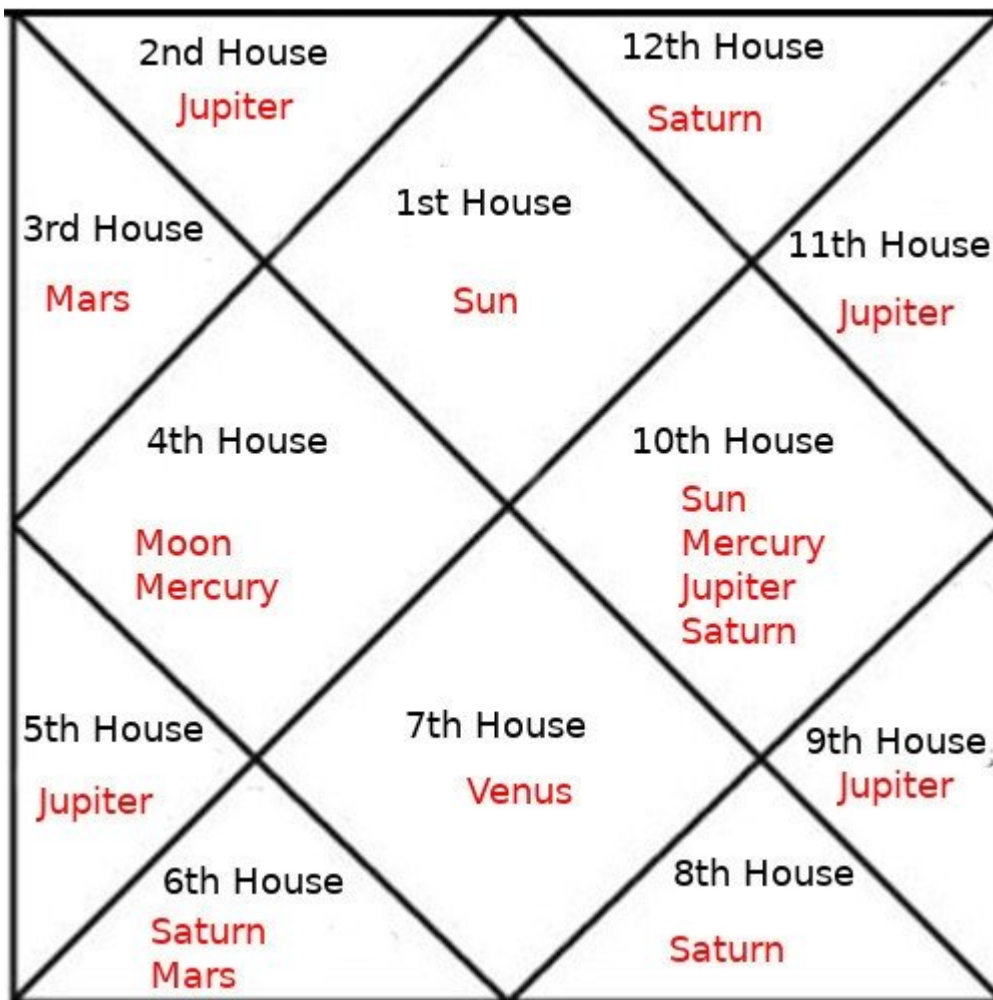


Mercury are also assigned different tatwas out of the five as given above.



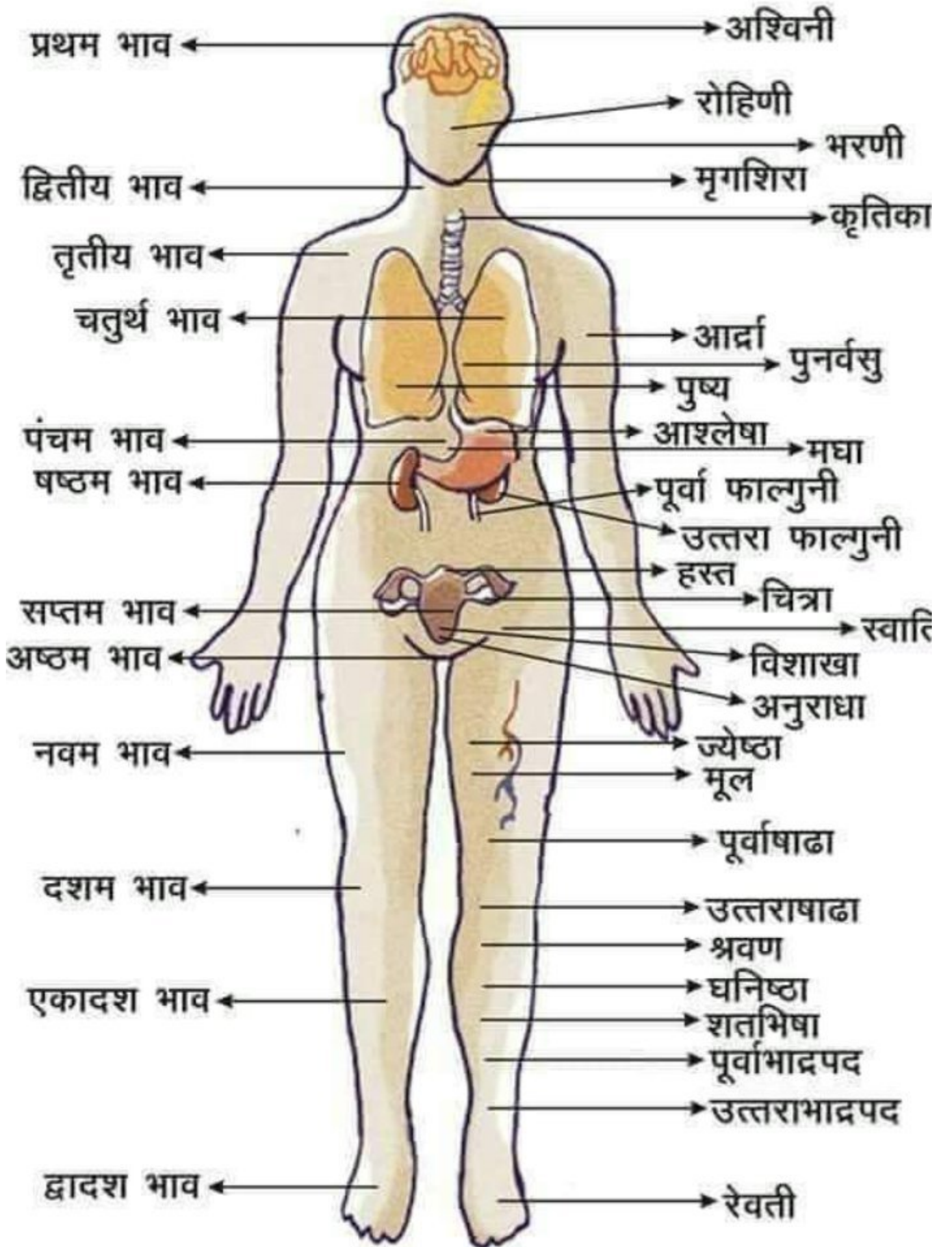
Same with the Rashis they also represent above tatwas.

In astrology We establish kalpurush in 12 houses of charts to predict medical issues in jataka's horoscope.



Astrologer need a combined deep study of planets, houses, gochar zodiac signs, nakshtra, house lord, lagna lord, drishti smabandh, dasha and many other factors to assess a chart.

A combination is visible in jatakas chart earlier also.



but the effect can be seen only when the transition and dasha will show their consequence depending on lagna lord(immunity).

