

Twitter Thread by Brian Shannon, CMT



Brian Shannon, CMT

[@alphatrends](#)



Where do you anchor the VWAP? Common question I receive and it is the topic of my [@FinTwitConf](#) talk in 2 weeks

Here are a few on \$CVS daily chart

orange- YTD

Red- year high

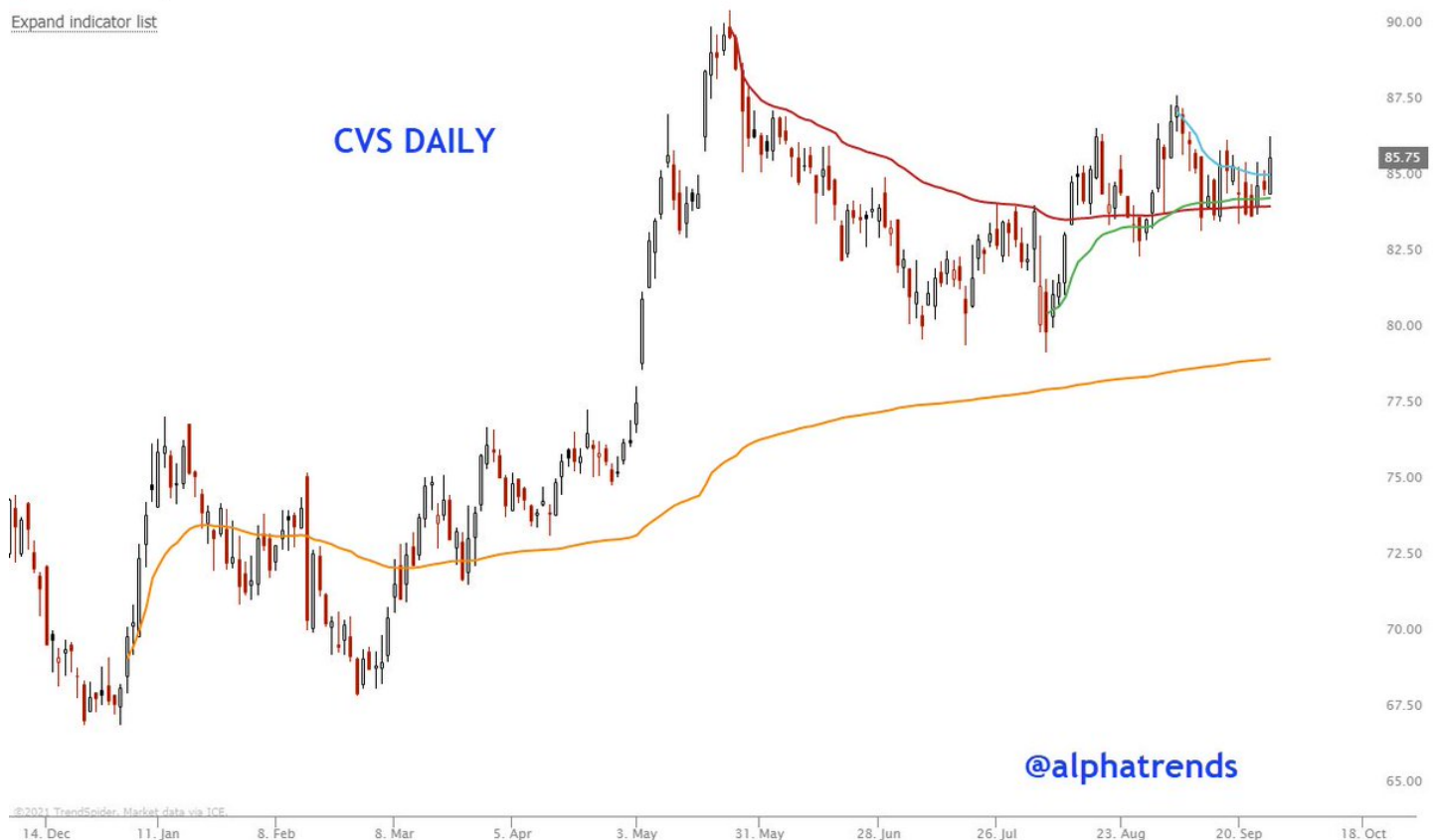
green- swing low after year high

blue- recent swing high

CVS Health Corporation, Daily, Nasdaq + Nyse BQT O 84.59 H 86.44 L 84.55 C 85.75 Period +1.37% Market closed

TrendSpider

[Expand indicator list](#)



and this is the weekly chart of \$CVS going back to summer of 2015 all time high

CVS Weekly

