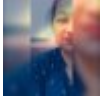


## Twitter Thread by Jaya\_Upadhyaya



**Jaya\_Upadhyaya**

@Jayalko1



**JWALAMUKHI TRIPURASUNDARI, UTHANAHALLI, MYSURU (KAR)**

**#bharatmandir**

**Jwalamukhi Tripursundari is believed to be the sister of Devi Chamundeshwari, the presiding deity of Mysuru**

**It is also that she represents the flaming mouth of Jalandhara, the demon whom Shiva crushed to death.**



When Devi Chamundeswari was fighting Mahishasura, she observed that from every drop of blood that spilled out of Mahishasura, another demon was born. So she created Tripurasundari to ensure that no blood dripped from Mahishasura.





Tripura Sundari means beauty of the three worlds.

The murti was installed during Wodeyar rule. An utsava murti made of pancha loha is kept in the sanctum sanctorum. Another shrine here is dedicated to Siddeshwara / Shiva surrounded by a beautiful wooden Mantapa.

[@GunduHuDuGa](#)



