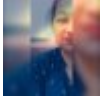


Twitter Thread by [Jaya Upadhyaya](#)



[Jaya Upadhyaya](#)

[@Jayalko1](#)



MA VINDHYAVASINI, MIRZAPUR (UP)

#bharatmandir

Vindhyachal is the only place in the world where all the three forms of Devi-Lakshmi, Kali and Saraswati have specific mandirs dedicated to them. All Shaktipeeth have body parts of Sati but in Vindhyachal, Devi resides herself.



When Sri Vishnu took birth as Krishna to Devaki- Vasudev, at the same time a girl was born to Yashoda-Nand. The infants were inter-changed and Kansa tried to kill the girl. The girl escaped from his hands and took the form of Devi. She, then, made Vindhya mountain her abode.

The war between Devi Durga and Mahishasur is said to have occurred at Vindhya mountain. Ma Vindhya is also called Mahishasur Mardini.

Vindhya is unique because Devi is worshipped as per tenets of Vaam maarg as also Dakshina Maarg of Shakti cult of our Dharma.

[@GunduHuDuGa](#)



Nearby, there is Ashtbhuj Mandir dedicated to Mahasaraswati and Kali Khoh Mandir dedicated to Ma Kali. Bhaktas visit these three Mandirs in one journey to complete the ritual pilgrimage called Trilokan Parikrama.

