

Twitter Thread by Jaya_Upadhyaya



Jaya_Upadhyaya

@Jayalko1



RISHI BHRINGI AND ARDHA-NAREESHWAR SHIVA

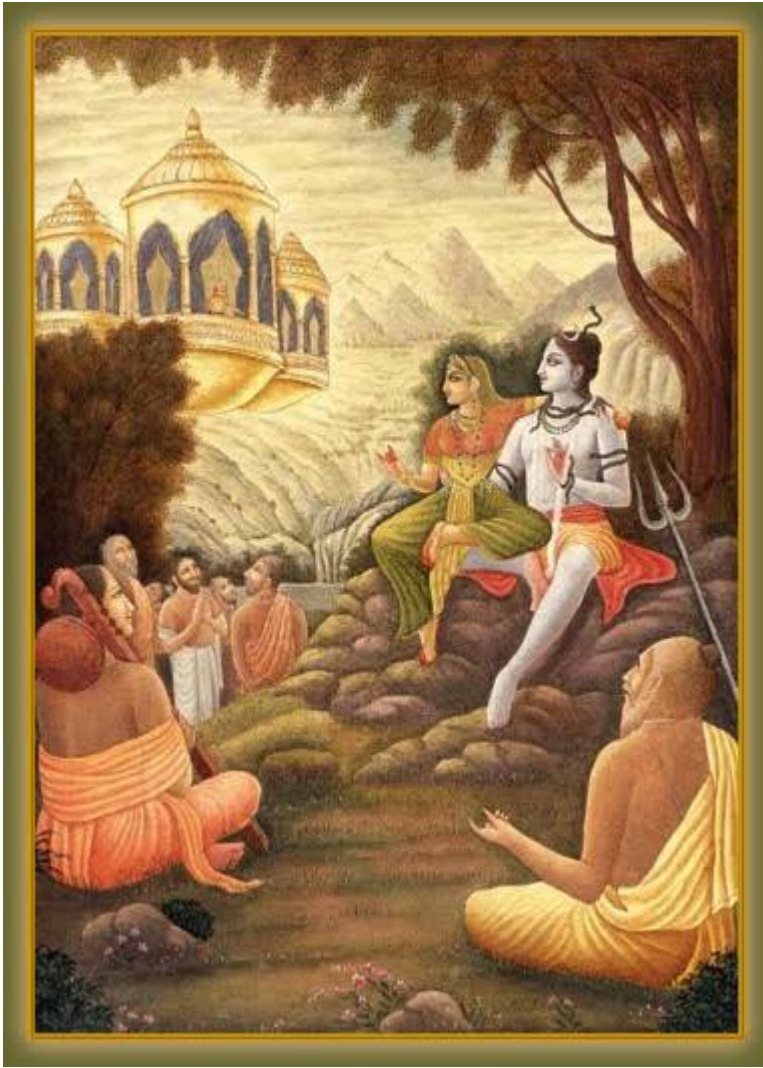
Rishi Bhringi was a devoted bhakt of Mahadev. However, in his devotion to Shiva, he ignored Mata Parvati.

Once, he visited Kailasha along with other Rishis. All the Rishis did parikrama of Shiva and Parvati both except Rishi Bhringi.



The same situation continued whenever Rishi Bhringi visited Kailasha. Mata Parvati decided to teach him that Shiva and Parvati are one and inseparable.

So on one such visit, Mata Parvati sat on the left lap of Mahadev when Rishi Bhringi came.



Seeing this, Rishi Bhṛngi took the form of a bee(some say bird) and did pradakshina/ parikrama only around Shiva's head and ignored Ma Parvati.

Angered Mata took away the Shakti from his body. Rishi lost his blood and flesh and was left with a bare skeletal form.



Seeing him in such a situation where he was unable to support himself, Shiva granted a third leg to him. Shiva then fused one half of his body with that of Ma Parvati and appeared as Ardha Nareeshwar. Rishi Bhringi finally realised that Shiv and Shakti are one and the same.



