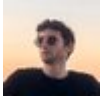


Twitter Thread by [FT Trading](#) ■ [Stock Trader](#)



[FT Trading](#) ■ [Stock Trader](#)

[@FT_Trading](#)



Ever wonder how traders get in stocks before they explode? ■

Or find options that move 1,000% in a single day/week?■

I made a thread going over exactly how I find these stocks BEFORE they take off ■



So, let's start with the software I use...

Finviz!! Finviz is a free website that I use to scan for stocks.

They have a lot of other cool features as well, but I only use their scanner.



Head on over to finviz and go to the screener

Click on the "All" tab on the top and put in the criteria in the next tweet



This is the first scan that I use for bullish swing setups

■Quarter +10%

■Week Down

■Vol over 400k

■Optionable

■Price > \$20



Filters: 5									
Descriptive(3)			Fundamental		Technical(2)		All(5)		
Exchange	Any	Index	Any	Sector	Any	Industry	Any	Country	Any
Market Cap.	Any	P/E	Any	Forward P/E	Any	PEG	Any	P/S	Any
P/B	Any	Price/Cash	Any	Price/Free Cash Flow	Any	EPS growth this year	Any	EPS growth next year	Any
EPS growth past 5 years	Any	EPS growth next 5 years	Any	Sales growth past 5 years	Any	EPS growth qtr over qtr	Any	Sales growth qtr over qtr	Any
Dividend Yield	Any	Return on Assets	Any	Return on Equity	Any	Return on Investment	Any	Current Ratio	Any
Quick Ratio	Any	LT Debt/Equity	Any	Debt/Equity	Any	Gross Margin	Any	Operating Margin	Any
Net Profit Margin	Any	Payout Ratio	Any	Insider Ownership	Any	Insider Transactions	Any	Institutional Ownership	Any
Institutional Transactions	Any	Float Short	Any	Analyst Recom.	Any	Option/Short	Optionable	Earnings Date	Any
Performance	Quarter +10%	Performance 2	Week Down	Volatility	Any	RSI (14)	Any	Gap	Any
20-Day Simple Moving Average	Any	50-Day Simple Moving Average	Any	200-Day Simple Moving Average	Any	Change	Any	Change from Open	Any
20-Day High/Low	Any	50-Day High/Low	Any	52-Week High/Low	Any	Pattern	Any	Candlestick	Any
Beta	Any	Average True Range	Any	Average Volume	Over 400K	Relative Volume	Any	Current Volume	Any
Price	Over \$20	Target Price	Any	IPO Date	Any	Shares Outstanding	Any	Float	Any
After-Hours Close	Any	After-Hours Change	Any						Reset (5)

The next scan I use is the opposite of the first one.

Simply change:

■Quarter +10% to -10%

■Week Down to Week up

This is my bearish scan for swing setups. ■

Filters: 5									
Descriptive(3)			Fundamental		Technical(2)		All(5)		
Exchange	Any	Index	Any	Sector	Any	Industry	Any	Country	Any
Market Cap.	Any	P/E	Any	Forward P/E	Any	PEG	Any	P/S	Any
P/B	Any	Price/Cash	Any	Price/Free Cash Flow	Any	EPS growth this year	Any	EPS growth next year	Any
EPS growth past 5 years	Any	EPS growth next 5 years	Any	Sales growth past 5 years	Any	EPS growth qtr over qtr	Any	Sales growth qtr over qtr	Any
Dividend Yield	Any	Return on Assets	Any	Return on Equity	Any	Return on Investment	Any	Current Ratio	Any
Quick Ratio	Any	LT Debt/Equity	Any	Debt/Equity	Any	Gross Margin	Any	Operating Margin	Any
Net Profit Margin	Any	Payout Ratio	Any	Insider Ownership	Any	Insider Transactions	Any	Institutional Ownership	Any
Institutional Transactions	Any	Float Short	Any	Analyst Recom.	Any	Option/Short	Optionable	Earnings Date	Any
Performance	Quarter -10%	Performance 2	Week Up	Volatility	Any	RSI (14)	Any	Gap	Any
20-Day Simple Moving Average	Any	50-Day Simple Moving Average	Any	200-Day Simple Moving Average	Any	Change	Any	Change from Open	Any
20-Day High/Low	Any	50-Day High/Low	Any	52-Week High/Low	Any	Pattern	Any	Candlestick	Any
Beta	Any	Average True Range	Any	Average Volume	Over 400K	Relative Volume	Any	Current Volume	Any
Price	Over \$20	Target Price	Any	IPO Date	Any	Shares Outstanding	Any	Float	Any
After-Hours Close	Any	After-Hours Change	Any						Reset (5)

The next two scans are very similar. I simply change “Quarter” with “Month”.

That’s it! I like to keep my scanning setups simple.

But over 400 stocks show up, how do I go through them?

I’ll show ya ■

After I put in my criteria, I go to the charts tab on the bottom. This will bring up a chart on finviz of every stock that fits my scan criteria. Then I simply glance through all the charts, looking to see if price is about to reach into a demand/supply zone



If I see a stock that looks like my setup (refer to my pinned tweet to see my setup) I will add it to my trading-view watchlist and go over it more in-depth to see if it fits my trading setup criteria.

■IMPORTANT■

I also check out the options on the stocks to see if there is enough volume.

I only like trading stocks with decent options volume and relatively tight spreads.

Wide spreads = bigger losses ■

The scans I mentioned are what I use to find swing trades that typically last 1-5 days. I am constantly looking for new scans and methods of searching for my setup. The whole process takes less than 30 minutes, so there's no need to spend hours going through hundreds of stocks

Well, I hope you enjoyed my thread on finding/scanning for stocks

Please leave a like/RT if you found this helpful

DM me with any questions!

Now go find the next \$GME ■■